

# Land off Narrow Lane, Llandudno Junction

Phase 1 and 2

Archaeological Watching Brief &  
Level 1 Building Recording



Ymddiriedolaeth Archaeolegol Gwynedd  
Gwynedd Archaeological Trust



# Land off Narrow Lane, Llandudno Junction

## Phase 1 and 2

## Archaeological Watching Brief & Level 1 Building Recording

Rhif Prosiect / Project No. G2392

Rhif Adroddiad / Report No.1295

Prepared for: Beech Developments

May 2016

Written by: Ken Owen and Stuart Reilly

Illustrations by: John Roberts



Cyhoeddwyd gan Ymddiriedolaeth Archaeolegol Gwynedd  
Ymddiriedolaeth Archaeolegol Gwynedd  
Craig Beuno, Ffordd y Garth,  
Bangor, Gwynedd, LL57 2RT

Published by Gwynedd Archaeological Trust  
Gwynedd Archaeological Trust  
Craig Beuno, Garth Road,  
Bangor, Gwynedd, LL57 2RT

Cadeiryddes/Chair - Yr Athro/Professor Nancy Edwards, B.A., PhD, F.S.A.  
Prif Archaeolegydd/Chief Archaeologist - Andrew Davidson, B.A., M.I.F.A.

Mae Ymddiriedolaeth Archaeolegol Gwynedd yn Gwmni Cyfyngedig (Ref Cof. 1180515) ac yn Elusen (Rhif Cof. 508849)  
Gwynedd Archaeological Trust is both a Limited Company (Reg No. 1180515) and a Charity (reg No. 508849)



Approvals Table				
	Role	Printed Name	Signature	Date
Originated by	Document Author	STUART REILLY	Stuart Reilly	06/05/16
Reviewed by	Document Reviewer	JOHN ROBERTS		06/05/16
Approved by	Principal Archaeologist	JOHN ROBERTS		06/05/16

Revision History			
Rev No.	Summary of Changes	Ref Section	Purpose of Issue



## Contents

NON – TECHNICAL SUMMARY .....	2
1.0 INTRODUCTION.....	3
2.0 HISTORICAL AND ARCHAEOLOGICAL BACKGROUND.....	4
3.0 METHODOLOGY.....	5
3.1 Level 1 Building Recording.....	5
3.2 Watching Brief .....	5
4.0 TOPOGRAPHY.....	7
5.0 RESULTS .....	8
5.1 Level 1 recording of the outbuildings.....	8
5.2 Watching Brief .....	8
6.0 INTERPRETATION AND CONCLUSION .....	11
7.0 SOURCES CONSULTED .....	12
APPENDIX I.....	13
Reproduction of Gwynedd Archaeological Trust project design (August 2014) .....	13
APPENDIX II.....	14
Pottery Sherd Report for G2392.....	14
APPENDIX III.....	15
Gwynedd Archaeological Trust photographic metadata.....	15
APPENDIX IV .....	46
Reproduction of CFA Report for G2392 .....	46
APPENDIX V .....	47
Reproduction of SUERC Report for G2392 .....	47



## FIGURE LIST

Figure 01: Plan of the proposed housing development off Narrow Lane, Llandudno Junction (not to scale; based on Beech Development RE Grade Dwg.# BD/NL/RG01 Rev C+ (08.08.2014);

Figure 02: Outline of Phase 1 & 2 Development and location of features therein. Scale 1:1500;

Figure 03: Reproduction of the First Edition 25" Ordnance Survey Map 1889: Sheets V.09 & V.10, with the Phase 1 & 2 development superimposed in red. Scale: 1:5000@A4;

Figure 04: Reproduction of the Second Edition 25" Ordnance Survey Map 1900: Sheets V.09 & V.10, with the Phase 1 & 2 development superimposed in RED. Scale: 1:5000@A4;

Figure 05: Reproduction of the Third Edition 25" Ordnance Survey Map 1913: Sheets V.09 & V.10, with the Phase 1 & 2 development superimposed in RED. Scale: 1:5000@A4;

Figure 06: Section and Plan of Pit [03], Scale 1:10 @ A4.

## **PLATE LIST**

Plate 01: External view of outbuilding with corrugated roof, associated with Waen-Fynydd. View from the south. 1x1m scale.

Plate 02: Interior of outbuilding with corrugated roof. View from the east. 1x1m scale.

Plate 03: Interior of outbuilding with corrugated roof. View from the east. 1x1m scale.

Plate 04: External view of smaller outbuilding, associated with Waen-Fynydd. View from the west. 1x1m scale.

Plate 05: Interior of smaller outbuilding. View from the west. 1x1m scale.

Plate 06: Topsoil strip of main site road. View from the north west.

Plate 07: Topsoil strip in the vicinity of house plots 14-15. View from the east. 1x1m scale.

Plate 08: Soil strip in the vicinity of house plots 53-55. View from the west.

Plate 09: Subsoil stripping of house plots 32-34. View from the east. 1x1m scale.

Plate 10: Foundation trenches of house plots 53-55. View from the east. 1x1m scale.

Plate 11: Location shot of pit [03]. View from the north north east.

Plate 12: Pre-ex shot of pit [03]. View from the east north east. 1x1m scale.

Plate 13: East north east facing section through pit [03]. 1x1m scale.

Plate 14: Post-ex shot of pit [03]. View from the east north east. 1x1m scale.

Plate 15: Field boundary PRN 36,514. View from the west. 1x1m scale.

Plate 16: Field boundary PRN 36,514, with the oak trees. View from the north.

Plate 17: Field boundary PRN 36,514. View from the west. 1x1m scale.

Plate 18: Location shot of modern house foundations. View from the south.  
1x1m scale.



## NON – TECHNICAL SUMMARY

*Gwynedd Archaeological Trust (GAT) was contracted by Beech Developments to conduct an archaeological watching brief during the groundworks associated with Phase 1 and 2 of the housing development at land off Narrow Lane, Llandudno Junction, Conwy County Borough (centred on NGR **SH80367829**).*

*The watching brief was conducted between the 15<sup>th</sup> September 2014 and 30<sup>th</sup> July 2015, during which there were 18 separate visits to site by GAT members of staff. The remnants of a ditch (PRN 36,514) was confirmed along the southern boundary of the development and a pit (PRN 61,631) with a radio carbon date of  $3319 \pm 30$  BP (Laboratory Code SUERC – 58848 (GU36816)), with a calibrated range of 1519 calBC at 95.4% probability, suggesting a date range within the Early to Middle Bronze Age (2500BC to 1000BC).*



## 1.0 INTRODUCTION

Gwynedd Archaeological Trust (GAT) was contracted by *Beech Developments* to conduct an archaeological watching brief during the groundworks associated with Phase 1 and 2 of the housing development at land off Narrow Lane, Llandudno Junction, Conwy County Borough (centred on NGR **SH80367829**).

The groundworks were completed by *Pro-Dig*, on behalf of *Beech Developments* between 15<sup>th</sup> September 2014 and the 30<sup>th</sup> July 2015.

The scheme involved:

- Level 1 recording of two outbuildings associated with an existing farm house (Waen - Fynydd), adjacent to the contractor's site compound;
- Monitoring the removal of top soil and sub soil during groundworks within the boundary of the development; and
- Monitoring deeper foundation trenches cut into the natural ground levels within the boundary of the proposed development (see Figure 01; based on client drawing: RE Grade Dwg.# BD/NL/RG 01 Rev C+ (08.08.2014)).

The scheme was monitored by Gwynedd Archaeological Planning Services (GAPS). GAT produced a project design outlining the proposed scheme and archaeological mitigation methodology in August 2014 (see Appendix I). The project design was subsequently approved by GAPS (email correspondence: 22<sup>nd</sup> August 2014).

The archaeological watching brief was undertaken as a planning condition (planning reference number 0/40652).

The guidelines specified in *Standards and Guidance for an Archaeological Watching Brief* (Chartered Institute for Archaeologists, 1994, rev. 2001, 2008 and 2014) were adhered to throughout the course of the project.

## 2.0 HISTORICAL AND ARCHAEOLOGICAL BACKGROUND

A brief examination of the regional Historic Environment Record (held by the Gwynedd Archaeological Trust, Craig Beuno, Garth Road, Bangor, Gwynedd LL57 2RT) identified a cluster of medieval field boundary remains within the south west corner of the housing development (Figure 02).

These include:

- PRN 36,513 – Medieval Field Boundary, Waen-fynydd (NGR SH80387823);
- PRN 36,515 – Medieval Field Boundary, south of Waen-fynydd (NGR SH80427823);
- PRN 36,516 – Medieval Field Boundary, south of Waen-fynydd (NGR SH80397822);
- PRN 36,514 – Ditch south of Waen-fynydd (unknown date; NGR SH80487822).

In addition, recent work undertaken by GAT at an adjacent school development identified two small sub-circular pits. Both pits were similar in size and contained a similar amount of stone within the fills even though Pit [005] showed evidence of burning and Pit [007] did not, it is possible to regard them as contemporary and part of a discrete cluster. The palaeoenvironmental report for the charcoal from pit [005] stated that it was most likely fire fuel and kindling, represented by Oak and Willow/Poplar respectively, which would have been sourced from the local area. An Early to Middle Neolithic radiocarbon date was obtained for the charcoal (SUERC-61197 (GU37966) & SUERC-61197 (GU37966)). Taken together the pits suggest domestic activity.

Together this evidence would imply that there was prehistoric and medieval activity within the immediate vicinity of the housing development off Narrow Lane, Llandudno Junction.

## 3.0 METHODOLOGY

### 3.1 Level 1 Building Recording

A Level 1 recording of two outbuildings associated with an existing farm house (Waen - Fynydd) was conducted at the start of the project. The Level 1 recording involved:

- Scaled photographs of the interior and exterior of the two outbuildings. The camera used for the photographic record was a digital SLR (Nikon D40) digital camera set to maximum resolution (3008 x 2000 6.1 effective megapixels) in RAW format. A total of 19 photographs were taken of the outbuildings ( Appendix II G2392\_023 – 034 and G2392\_037 – 043).
- A written record of the approximate dimensions and description of the materials used in the construction of the outbuildings. This information was entered onto GAT proforma record sheets.

### 3.2 Watching Brief

(Reproduced from Chartered Institute for Archaeologists 2014, *Standard and Guidance for an Archaeological Watching Brief*)

The definition of an archaeological watching brief is a formal programme of observation and investigation conducted during any operation carried out for non-archaeological reasons. This will be within a specified area or site on land, inter-tidal zone or underwater, where there is a possibility that archaeological deposits may be disturbed or destroyed. The programme will result in the preparation of a report and ordered archive.

This definition and Standard do not cover chance observations, which should lead to an appropriate archaeological project being designed and implemented, nor do they apply to monitoring for preservation of remains in situ.

An archaeological watching brief is divided into four categories according to the Institute for Archaeologists *Standard and Guidance for an archaeological watching brief*:

- comprehensive (present during all ground disturbance)
- intensive (present during sensitive ground disturbance)
- intermittent (viewing the trenches after machining)

- partial (as and when seems appropriate).

A **partial** watching brief was recommended by GAT for this scheme, to be completed during the topsoil/subsoil strip, ground reduction and foundation trenches.

The **watching brief** consisted of the following:

- Observation of non-archaeological excavation works.
- A written and photographic record of any archaeological or non-archaeological deposits that were revealed. The written record onto GAT pro-forma record sheets. The camera used for the photographic record was a digital SLR (Nikon D40) digital camera set to maximum resolution (3008 x 2000 6.1 effective megapixels) in RAW format. The images were subsequently converted to TIFF and JPEG for archiving (English Heritage, 2006, 11). A complete table of metadata with details of each photographic image taken, including descriptions and directions of shot, were produced using Microsoft Access (archive images G2392\_001 to G2392\_177; see Appendix II for a reproduction of the metadata).
- Preparation of full archive report under project number **G2392**.

The watching brief was conducted between 15<sup>th</sup> September 2014 and 30<sup>th</sup> July 2015. The groundworks required the removal of topsoil and subsoil in order to reduce the ground level to that required by the building contractors to obtain their working level, after which foundation trenches for each individual housing plot were excavated into the natural ground levels. A 13 tonne 360° tracked excavator with a toothless ditching bucket was normally used to strip the topsoil, followed by the subsoil, these soils were removed from the work area by dumper trucks and placed in individual bunds at specific locations within the site boundaries.

## 4.0 TOPOGRAPHY

The site is located at Waen-Fynydd, along the western side of the modern A470 road on leaving Llandudno Junction towards Llandudno. The Phase 1 and 2 development area incorporated two quite large fields, and two smaller fields at the northern side. The highest ground is roughly centrally located with a shallow slope downwards to the north and a steeper slope down towards the south. All fields were grassed and used for pasture with the soils being fairly shallow at the centrally located higher ground, with natural levels being observed during ground reduction operations. The northern and southern areas had deeper colluvial soils, in these areas the natural ground levels were not observed during ground reduction.

The underlying geological bedrock of the development area comprises of sedimentary bedrock of mudstone and siltstone formed in deep seas from irregular slurries of shallow water sediments that were then re-deposited as graded beds, approximately 428 million years ago. The superficial deposits of Till, Devensian-Diamicton rocks were formed approximately 2 million years ago when Ice Age glaciers moving across the landscape deposited till with outwash sand and gravel deposits from seasonal and post glacial meltwaters.

## **5.0 RESULTS**

### **5.1 Level 1 recording of the outbuildings**

Two small outbuildings were located at the northern edge of the farmyard of Waen-Fynydd, adjacent to the main entrance onto the housing development off Narrow Lane. The larger of the two structures measured 9.8m x 5.0m, was of brick construction covered by a thin whitewash with a pitched corrugated cement/asbestos roof (Plate 01). It had two large windows on the southern and northern faces, the majority of which had been bricked up, along with two doorways on the southern face, one of which had been bricked up. The building was divided into two rooms of similar size, with a smooth concrete floor and cement rendered walls which were roughly painted in two tones (Plates 02 & 03).

The smaller of the two structures measured 5.6m x 4.7m, was of brick construction, with a faded whitewash and a slanted corrugated iron roof. The western face of the building included a doorway and small window (Plate 04). The interior of the building was quite ramshackle with exposed wooden beams to hold the corrugated roof in place and a dishevelled 'ceiling' over concrete block enclosed animal pens (Plate 05). The inner face of the brick wall was covered by a thin, fading whitewash.

Given the similarity of construction and materials used, the outbuildings were likely to have been broadly contemporary, dating to the early to mid - 20<sup>th</sup> century. This observation was confirmed through the examination of the First (1889), Second (1900) and Third (1913) Edition 25" Ordnance Survey Maps (Figures 03 – 05). The Ordnance Survey Maps depict a probable farmhouse located on the edge of Narrow Lane along with an adjacent smaller rectangular in plan outbuilding, which appeared by the Second Edition. These structures were no longer extant by the time of the development and were probably demolished to make way for a modern bungalow.

### **5.2 Watching Brief**

Most of the ground reduction work was completed using one or two 13 tonne tracked 360° excavators fitted with a 2.0m wide toothless ditching bucket. The excavated soils were placed into six tonne dumper trucks and removed onto designated areas within the site, although in some plots the soils were stored within the outer perimeter of the working areas (Plates 06 – 09).

The topsoil had a maximum depth of 0.30m and consisted of a fine, cohesive mid brown loamy clay mixed with frequent plant roots, in particular adjacent to the mature field boundaries and moderate sub-angular and sub-rounded stones. It overlaid a soft, cohesive

mid greyish brown silty clay subsoil which had an average depth of 0.15m in the fields immediately surrounding the farmhouse and farmyard. The subsoil increased to a maximum depth of 0.35m along the southern limit of the development, at the base of a steep slope, in a natural hollow. The formation levels of the development's houses were set within the subsoil and the underlying natural was only visible in the foundation trenches of the houses which had an average width of 0.75m and maximum depth of 1.0m (Plate 10) and were examined immediately after excavation by the GAT archaeologist. The underlying natural was a light greyish fine, compact yellow sandy clay with an orange tint and included moderately frequent large sub-rounded boulders. The presence of these boulders, especially in areas of the development where the topsoil and subsoil were shallower, would indicate that the fields had not been ploughed, at least not within the last century when ploughing became more mechanised and was conducted at a greater depth.

During removal of the topsoil and subsoil, 19<sup>th</sup> and 20<sup>th</sup> century pottery sherds were found at fairly regular intervals across the site, with a higher concentration in the fields immediately adjacent to the farmhouse. The pottery sherds were noted for the archaeological record details of which are contained within Appendix III.

During the soil strip of the house plots 54-59 a small pit (PRN 61631) with a charcoal rich fill was identified during the watching brief (Plate 11). The pit [03] was sub-circular in plan (Plate 12) with a length of 0.67m, breadth of 0.52m and depth of 0.22m (Plate 13). The cut had a sharp break of slope at the top, with steep almost vertical sides and a fairly abrupt break of slope at the base which was flat (Figure 06 and Plate 14). The pit was backfilled by [04] a firm, compact dark brownish black silty clay mixed with very frequent burnt stone and frequent inclusions of charcoal. There was no indication of in-situ burning within the pit.

A bulk sample was taken of [04], which was subsequently processed and assessed by *CFA Archaeology Ltd.* (Appendix IV). Charcoal fragments of hazel (*Corylus avellana*) were selected and submitted to the *Scottish Universities Environmental Research Centre* (SUERC) for radiocarbon dating. (Appendix V). A date was requested and quoted in conventional years BP (before 1950 AD) with calibrated age ranges determined from the University of Oxford Radiocarbon Accelerator Unit calibration programme (OxCal14). The radiocarbon date was  $3319 \pm 30$  BP (Laboratory Code SUERC – 58848 (GU36816)), with a calibrated range of 1519 calBC at 95.4% probability, suggesting a date range within the Early to Middle Bronze Age (2500BC to 1000BC).

The remnants of a ditch (PRN 36,514) existed along the southern edge of the development. It was best preserved along the south eastern edge of this phase of the development in the vicinity of house plots 50 – 58 (Plate 59). The ditch extended east west for an approximate

distance of 100m, with an average width of 1.00m and depth of 0.60m, with a low bank on the southern edge. The boundary fences of the existing adjacent semi-detached bungalows respected the ditch although the boundaries of the row of terraced houses encroached onto the ditch and associated bank. The ditch was visible and extant as far as a cluster of oak trees (Plate 16) at the rear of where plots 52 and 53 will be built. The outline of the ditch was partially obscured by long grass and dense vegetation (Plate 17). The ditch was identified in GAT Report 398 with the co-ordinates SH80487822C, which positions it within the back garden of an existing property that backs on to the development. In actual fact the ditch is located along the southern boundary of the Phase 1 & 2 development (see Figure 02).

In addition, the remnants of a modern house foundation, in the vicinity of house plots 24 and 25, 10.0m west of Waen-Fynydd farmhouse were uncovered during the watching brief. It covered an area of 22.0m x 6.0m and consisted of a concrete floor slab set on top of concrete block foundations that were clad by orange bricks bonded with cement (Plate 18).

## 6.0 INTERPRETATION AND CONCLUSION

Gwynedd Archaeological Trust (GAT) was contracted by *Beech Developments* to conduct an archaeological watching brief during the groundworks associated with the Phase 1 and 2 of the housing development at land off Narrow Lane, Llandudno Junction, Conwy County Borough.

A Level 1 building record of two outbuildings associated with Waen-Fynydd prior to demolition was conducted as part of the archaeological works associated with this phase of the development. A total of 19 photographs were taken of the exterior and interior of the outbuildings (Figure 07) which, along with the farm house, were of early or mid - 20<sup>th</sup> century build.

The majority of the archaeological works consisted of a watching brief of the topsoil and subsoil removal across Phase 1 and 2 of the development. During the watching brief a sub-circular pit [03], PRN 61631, was identified and investigated, with the bulk sample taken of the pit's fill [04] producing a radio carbon date of  $3319 \pm 30$  BP (Laboratory Code SUERC – 58848 (GU36816)), with a calibrated range of 1519 calBC at 95.4% probability, suggesting a date range within the Early to Middle Bronze Age (2500BC to 1000BC) (Appendix V).

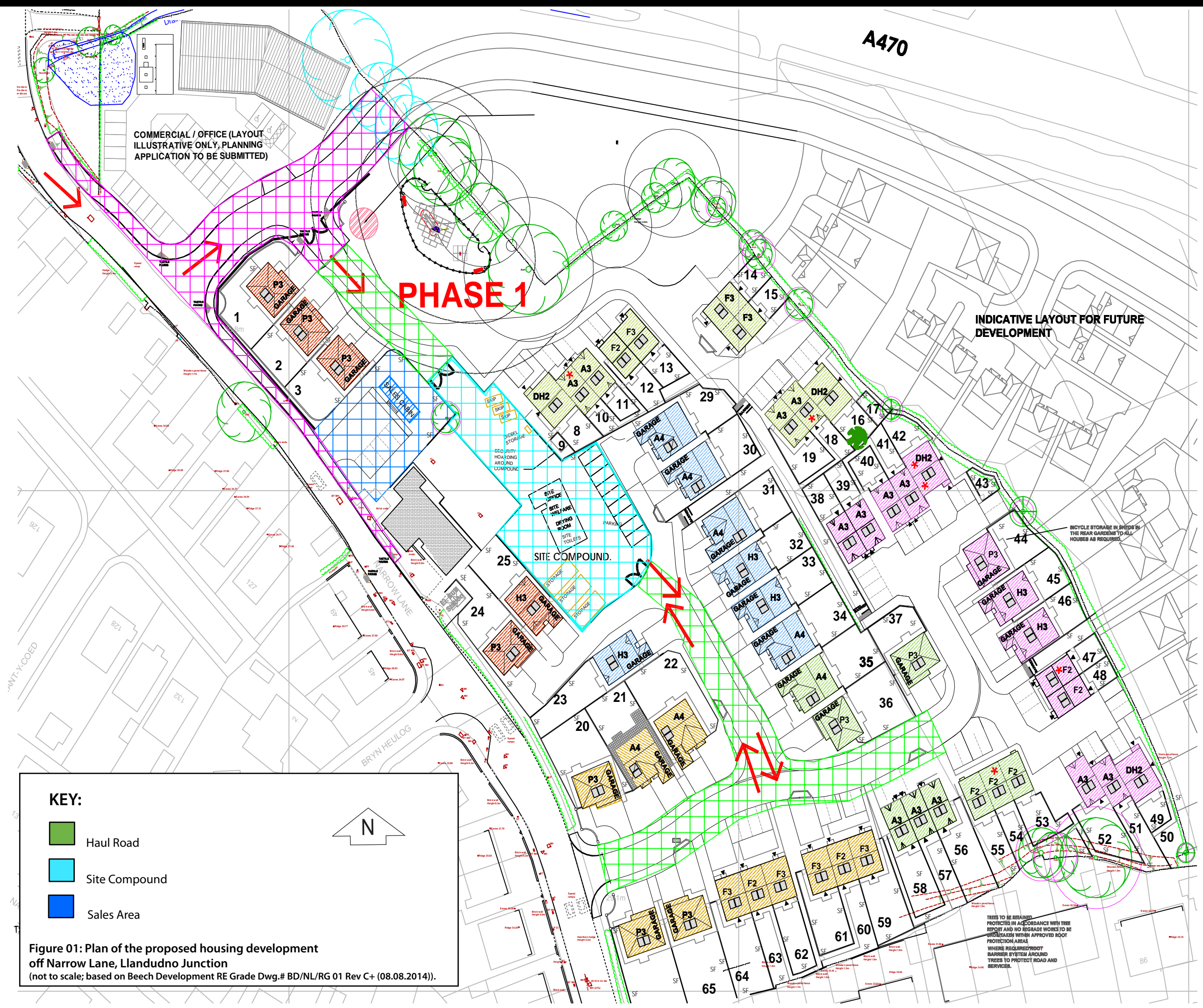
The evidence garnered from this pit alongside that of the pits identified in the school development to the immediate south east, would suggest transitory prehistoric activity. The species identification report suggested the fire fuel and kindling was sourced from the local area using wood from the dominant species of Hazel, Oak, Willow and Poplar. Together this information offers a glimpse of the activity that took place in this part of Llandudno Junction and the tree species that were present in late prehistory.

## **7.0 SOURCES CONSULTED**

Beech Development RE Grade Dwg.# BD/NL/RG 01 Rev C+ (08.08.2014);

Parry L.W. and K. Owen 2015. Archaeological Mitigation Report for Boundary Recording and Controlled Strip Excavation. Gwynedd Archaeological Trust Report 1233;

Standard and Guidance for Archaeological Watching Brief (Institute for Archaeologists, 1994, rev. 200, 2008 & 2014).



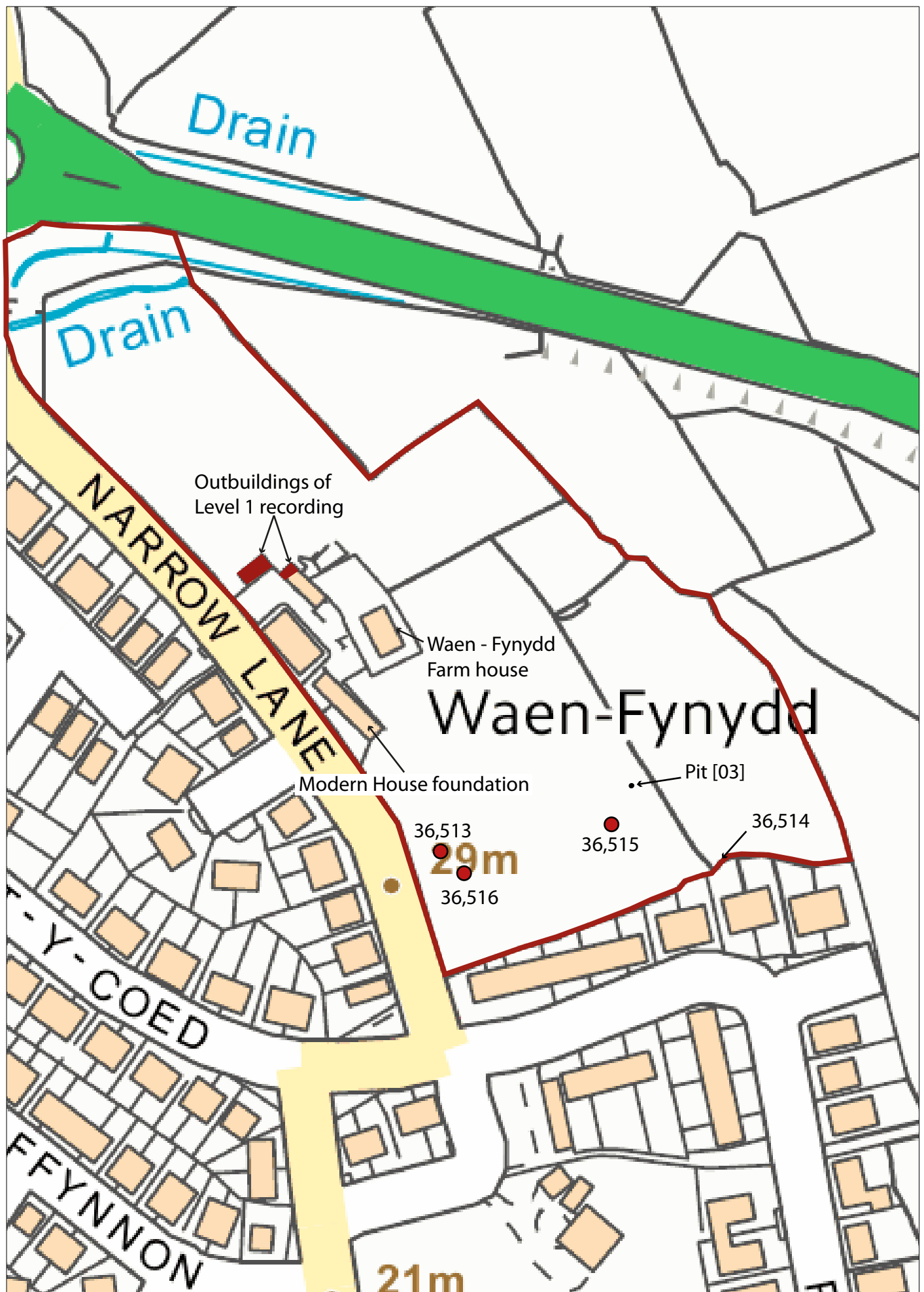


Figure 02: Outline of Phase 1 & 2 Development and location of features therein. Scale 1:1500.  
 Ordnance Survey County Series. Crown Copyright. All Rights Reserved. License number AL100020895.

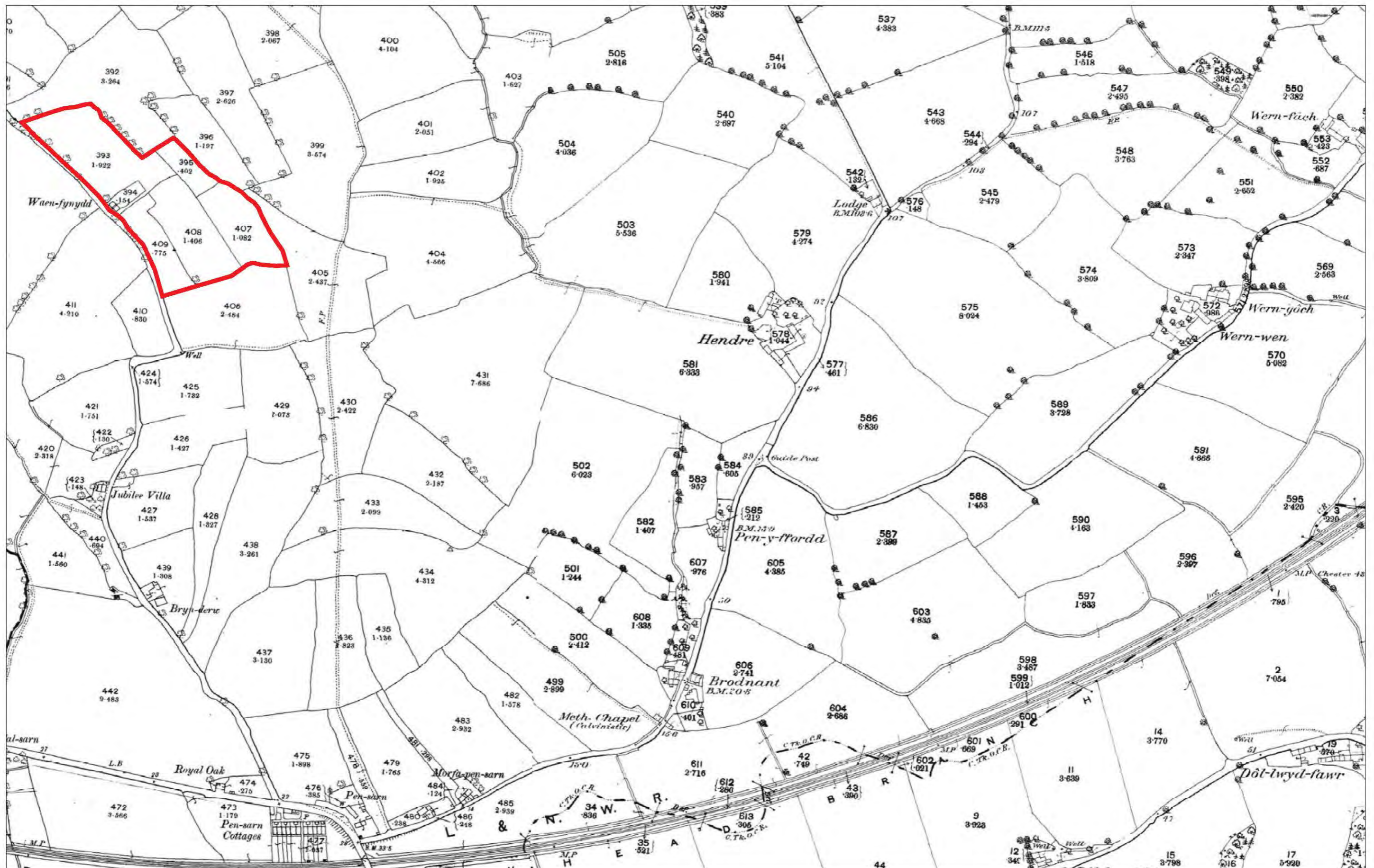


Figure 03: Reproduction of the First Edition 25" Ordnance Survey Map 1889: Sheets V.09 & V.10, with the Phase 1 & 2 development superimposed in red.  
Scale: 1:5000@A4.

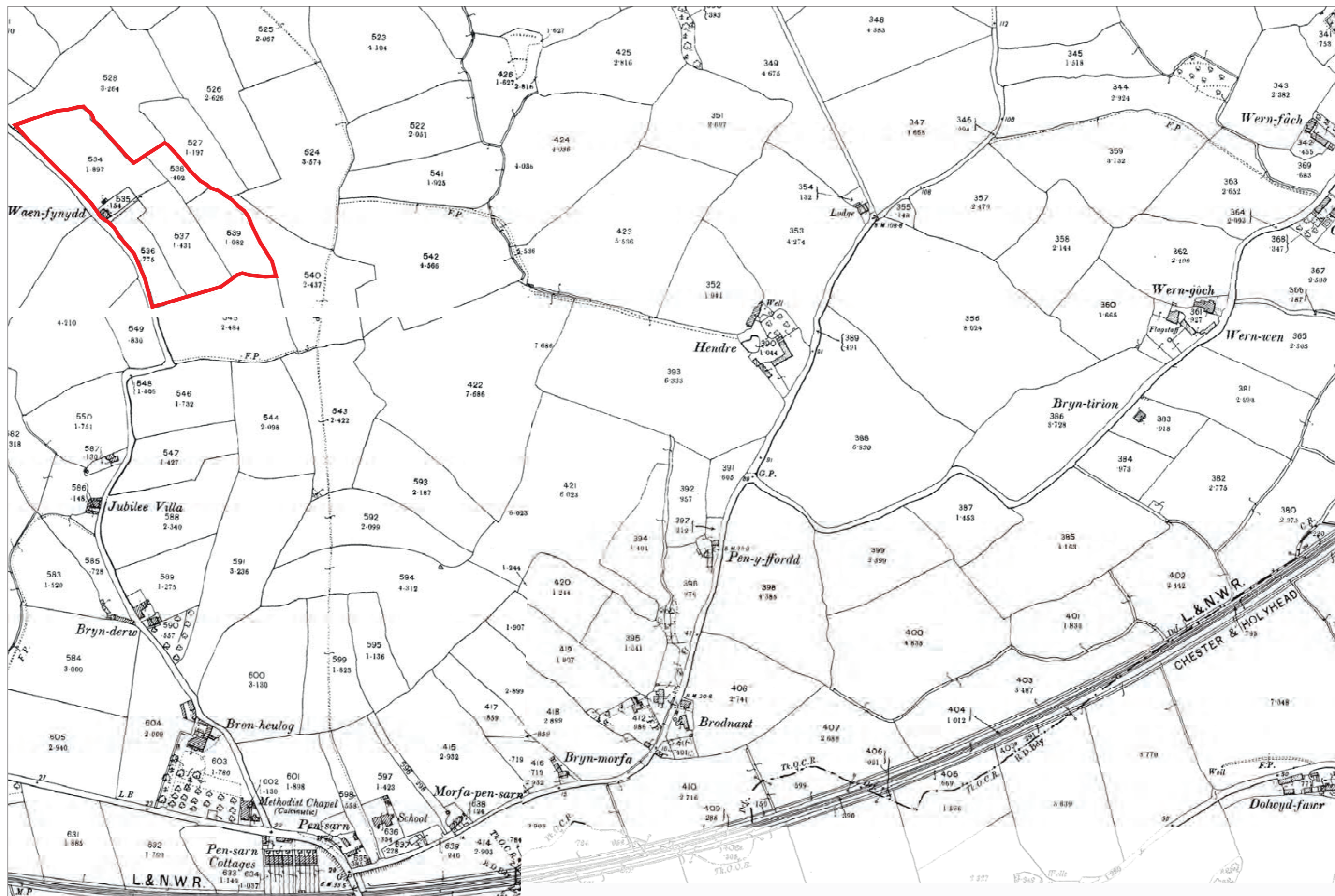


Figure 04: Reproduction of the Second Edition 25" Ordnance Survey Map 1900: Sheets V.09 & V.10, with the Phase 1 & 2 development superimposed in RED. Scale: 1:5000@A4.

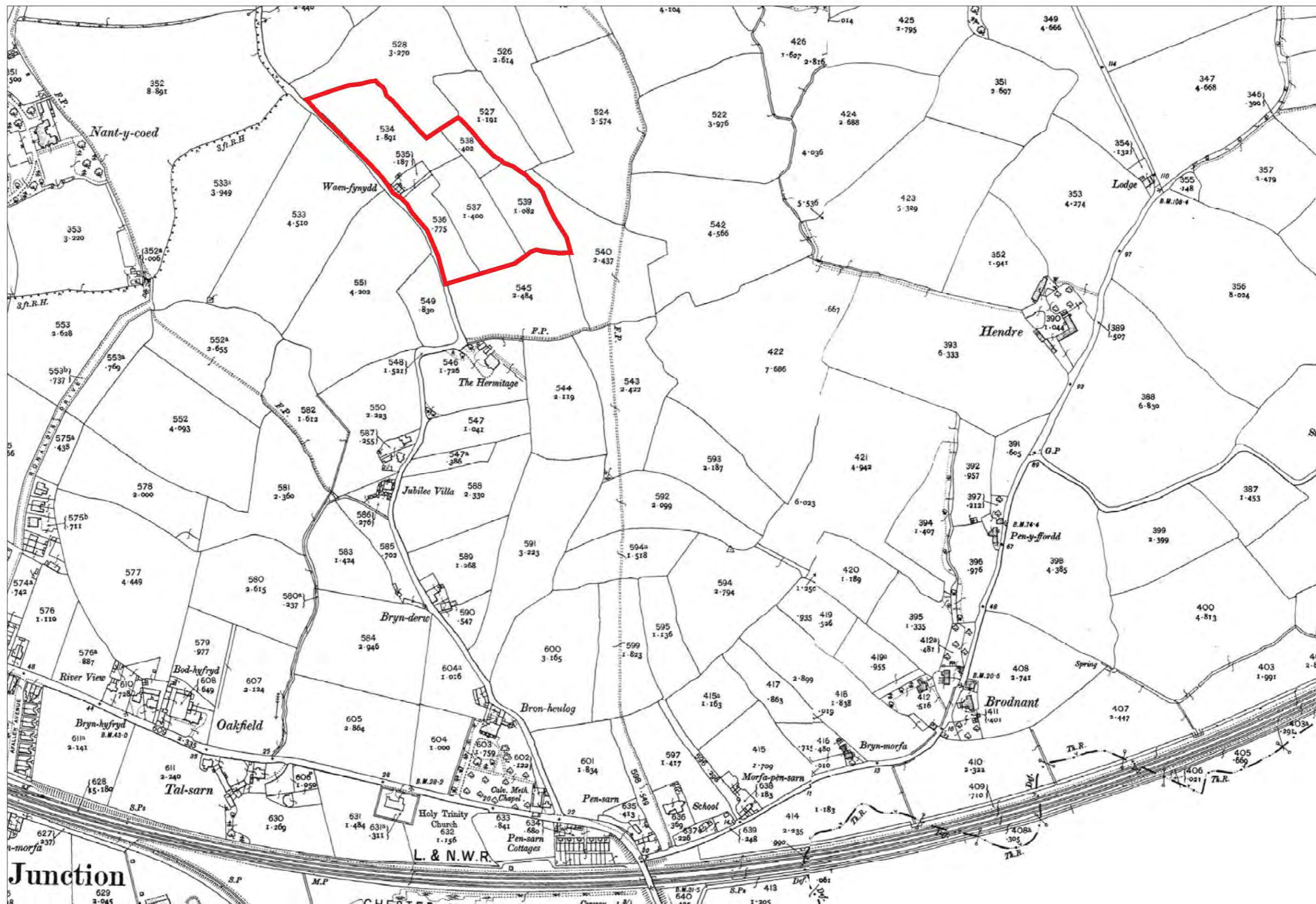


Figure 05: Reproduction of the Third Edition 25" Ordnance Survey Map 1913: Sheets V.09 & V.10, with the Phase 1 & 2 developments superimposed in RED.  
Scale: 1:5000@A4.

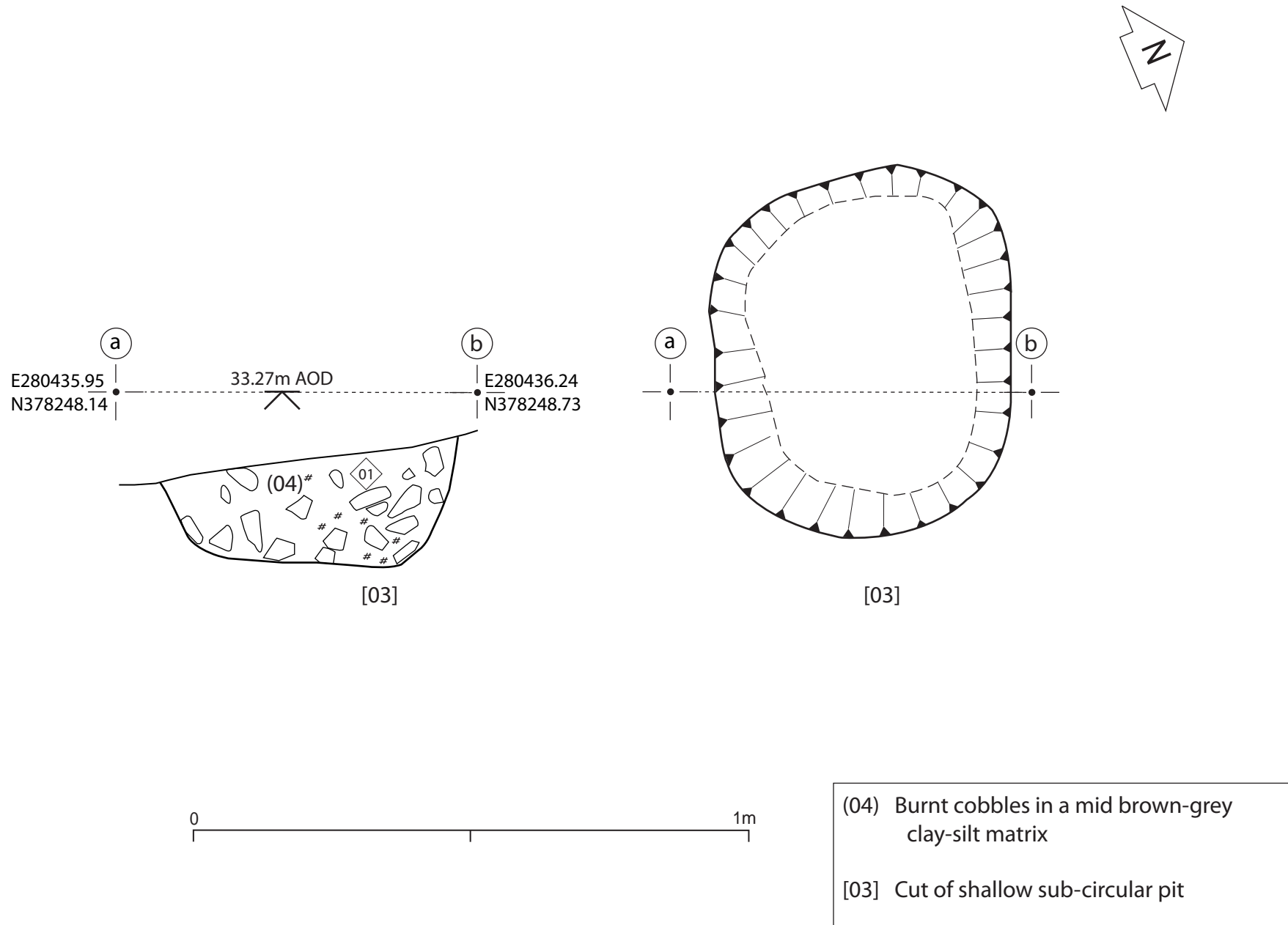


Figure 06: Section and Plan of Pit [03], PRN 61631. Scale 1:10 @ A4

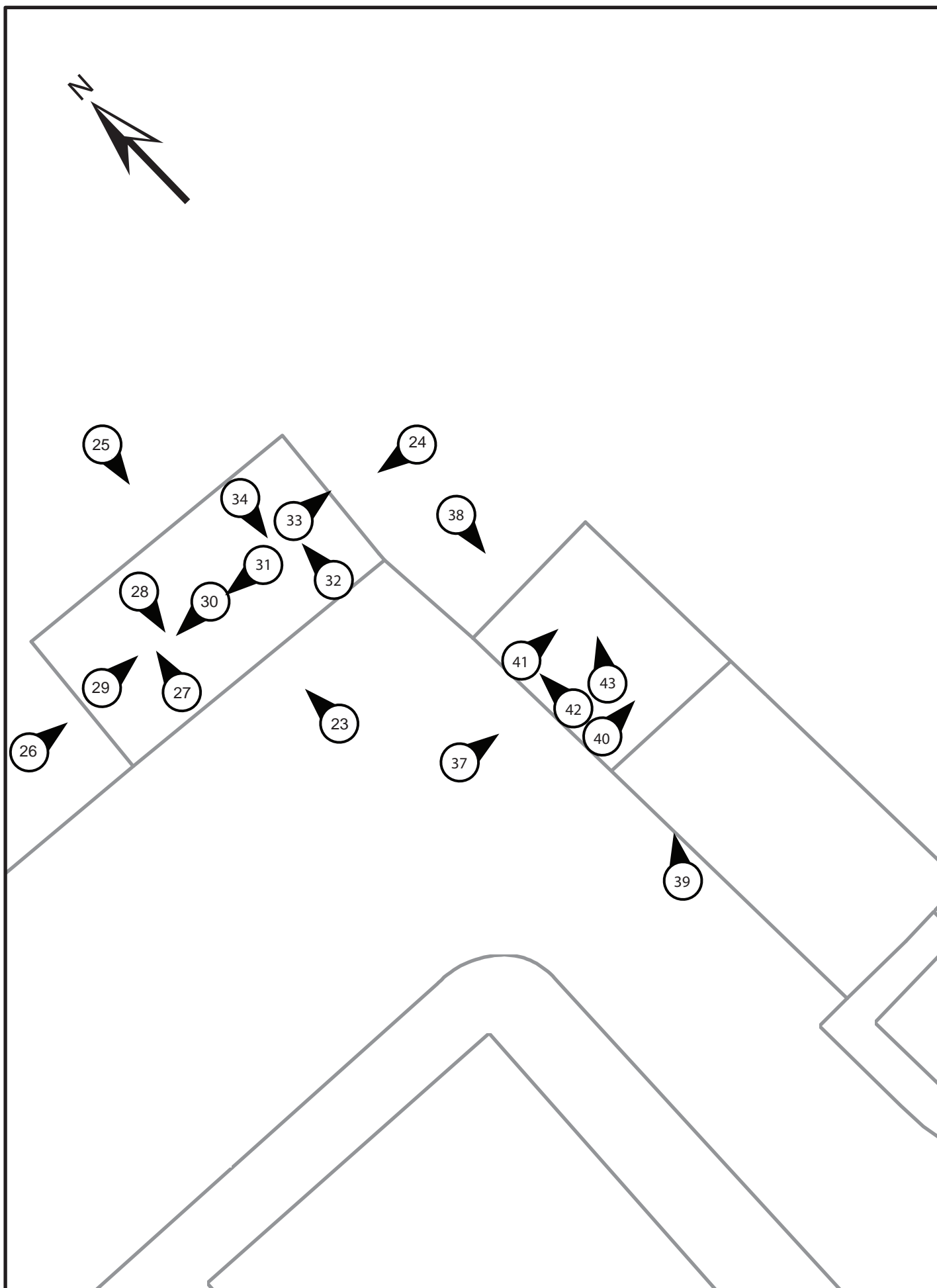


Figure 07: Exterior plan of the outbuildings of Waen-fynydd - location and orientation of photographic archive images G2392\_023 – 034 and G2392\_037 – 043. Scale 1:750.





Plate 01: External view of outbuilding with corrugated roof, associated with Waen-Fynydd. View from the south. 1x1m scale.



Plate 02: Interior of outbuilding with corrugated roof. View from the east. 1x1m scale.



Plate 03: Interior of outbuilding with corrugated roof. View from the east. 1x1m scale.



Plate 04: External view of smaller outbuilding, associated with Waen-Fynydd. View from the west. 1x1m scale.



Plate 05: Interior of smaller outbuilding. View from the west. 1x1m scale.



Plate 06: Topsoil strip of main site road. View from the north west.



Plate 07: Topsoil strip in the vicinity of house plots 14-15. View from the east. 1x1m scale.



Plate 08: Soil strip in the vicinity of house plots 53-55. View from the west.



Plate 09: Subsoil stripping of house plots 32-34. View from the east. 1x1m scale.



Plate 10: Foundation trenches of house plots 53-55. View from the east. 1x1m scale.



Plate 11: Location shot of pit [03]. View from the north north east.



Plate 12: Pre-ex shot of pit [03]. View from the east north east. 1x1m scale.



Plate 13: East north east facing section through pit [03]. 1x1m scale.



Plate 14: Post-ex shot of pit [03]. View from the east north east. 1x1m scale.



Plate 15: Field boundary PRN 36,514. View from the west. 1x1m scale.



Plate 16: Field boundary PRN 36,514, with the oak trees. View from the north.



Plate 17: Field boundary PRN 36,514. View from the west. 1x1m scale.



Plate 18: Location shot of modern house foundations. View from the south. 1x1m scale.



## **APPENDIX I**

**Reproduction of Gwynedd Archaeological Trust project design  
(August 2014)**



LAND OFF NARROW LANE, LLANDUDNO JUNCTION

PROJECT DESIGN FOR ARCHAEOLOGICAL  
WATCHING BRIEF (G2392)

***Prepared for***

Beech Developments

***August 2014***

Ymddiriedolaeth Archaeolegol Gwynedd  
Gwynedd Archaeological Trust

# LAND OF NARROW LANE, LLANDUDNO JUNCTION ARCHAEOLOGICAL WATCHING BRIEF

Prepared for *Beech Developments*, August 2014

## Contents

<b>1.0 INTRODUCTION .....</b>	<b>3</b>
<b>2.0 ARCHAEOLOGICAL BACKGROUND.....</b>	<b>4</b>
<b>3.0 METHOD STATEMENT .....</b>	<b>5</b>
<b>3.1 Introduction.....</b>	<b>5</b>
<b>3.2 Basic watching brief methodological procedures .....</b>	<b>6</b>
3.2.1 <i>Watching Brief</i> .....	6
3.2.2 <i>Environmental Samples</i> .....	6
3.2.3 <i>Human Remains</i> .....	6
3.2.4 <i>Small Finds</i> .....	6
<b>3.3 Further Archaeological Works .....</b>	<b>8</b>
<b>3.4 Monitoring Arrangements .....</b>	<b>8</b>
<b>3.5 Processing data, illustration, report and archiving .....</b>	<b>8</b>
<b>4.0 PROCESSING DATA, ILLUSTRATION, REPORT AND ARCHIVING .....</b>	<b>10</b>
<b>5.0 PERSONNEL .....</b>	<b>11</b>
<b>6.0 HEALTH AND SAFETY .....</b>	<b>12</b>
<b>7.0 SOURCES CONSULTED .....</b>	<b>13</b>
<b>Figure 1 .....</b>	<b>14</b>
<b>Reproduction of Beech Development Ltd Plan of haul road, site compound and sales area.</b>	<b>14</b>
<b>Figure 2.....</b>	<b>15</b>
<b>Location of medieval field boundary remains. ....</b>	<b>15</b>

## 1.0 INTRODUCTION

Gwynedd Archaeological Trust (GAT) has been asked by *Beech Developments* to provide a project design for undertaking an archaeological watching brief during groundworks associated with the proposed housing development at Land off Narrow Lane, Llandudno Junction (centred on NGR **SH80367829**). The proposed layout of the development is shown on client drawing (reproduced as Figure 01). The archaeological watching brief will be as a planning condition (planning reference 0/40652) and will cover the whole development. In addition, GAPS have requested that a Level 1 recording of outbuildings associated with an existing farm house, in the vicinity of the site compound, is conducted in advance of ground works.

The development works are scheduled from w/c 01/09/14; the initial ground clearance is expected to be completed within 2 working weeks.

The first phase of the watching brief will monitor the following:

- The removal of topsoil and subsoil during groundworks within the south west corner of the development (i.e. the haul road, site compound, sales area and house plots 20-22, 59-66 and 35-36) (Figure 1).

The scheme will be monitored by the Gwynedd Archaeological Planning Services (GAPS) and the content of this design must be approved by the GAPS Archaeologist prior to the start of the watching brief.

Reference will be made to the guidelines specified in *Standard and Guidance for Archaeological Watching Brief* (Institute for Archaeologists 2008).

## 2.0 ARCHAEOLOGICAL BACKGROUND

A brief examination of the regional Historic Environment Record (held by the Gwynedd Archaeological Trust, Craig Beuno, Garth Road, Bangor, Gwynedd LL57 2RT) identified a cluster of medieval field boundary remains within the south west corner of the housing development (Figure 02).

These include:

- PRN 36,513 – Medieval Field Boundary, Waen-fynydd (NGR SH80387823);
- PRN 36,515 – Medieval Field Boundary, south of Waen-fynydd (NGR SH80427823);
- PRN 36,516 – Medieval Field Boundary, south of Waen-fynydd (NGR SH80397822);
- PRN 36,514 – Ditch south of Waen-fynydd (unknown date; NGR SH80487822)

## 3.0 METHOD STATEMENT

### 3.1 Introduction

(Reproduced from Institute for Archaeologists 2008, *Standard and Guidance for an Archaeological Watching Brief*)

The definition of an archaeological watching brief is a formal programme of observation and investigation conducted during any operation carried out for non-archaeological reasons. This will be within a specified area or site on land, inter-tidal zone or underwater, where there is a possibility that archaeological deposits may be disturbed or destroyed. The programme will result in the preparation of a report and ordered archive.

This definition and Standard do not cover chance observations, which should lead to an appropriate archaeological project being designed and implemented, nor do they apply to monitoring for preservation of remains in situ.

An archaeological watching brief is divided into four categories according to the Institute for Archaeologists *Standard and Guidance for an archaeological watching brief*:

- comprehensive (present during all ground disturbance)
- intensive (present during sensitive ground disturbance)
- intermittent (viewing the trenches after machining)
- partial (as and when seems appropriate).

A **partial** watching brief recommended by GAT for this scheme, to be completed during bulk earthworks.

The **watching brief** will consist of the following:

- Observation of non-archaeological excavation works.
- A drawn, written and photographic record of any archaeological structures and deposits that may be revealed.
- Preparation of full archive report.

The watching brief will monitor:

- The removal of topsoil and subsoil during groundworks within the boundary of the proposed development

## 3.2 Basic watching brief methodological procedures

### 3.2.1 Watching Brief

All attendances and identified features will be recorded using GAT pro-formas and photographed using a digital SLR camera set to JPEG FINE format. The extent of any identified archaeological activity including artefacts will be located using survey grade (not handheld) GPS with <10cm accuracy (model: *Trimble GNSS/R6/5800*).

All features encountered will be manually cleaned and examined to determine extent, function, date and relationship to adjacent features. Limited excavation will be undertaken to characterise the features; any subsequent excavation will be detailed in an appropriate Further Archaeological Works Design.

Where appropriate, samples for specialist analyses will be taken.

### 3.2.2 Environmental Samples

If encountered, relevant archaeological deposits will be sampled by taking bulk samples for flotation of charred plant remains. Bulk samples will be taken from waterlogged deposits for macroscopic plant remains. Other bulk samples, for example from middens, may be taken for small animal bones and small artefacts.

### 3.2.3 Human Remains

If encountered, human remains will be left *in-situ*, covered and protected, and both the coroner and the GAPS Archaeologist informed. If removal is necessary it will take place under appropriate regulations and with due regard for health and safety issues. In order to excavate human remains, a licence is required under Section 25 of the Burials Act 1857 for the removal of any body or remains of any body from any place of burial. This will be applied for should human remains need to be investigated or moved.

### 3.2.4 Small Finds

The vast majority of finds recovered from archaeological excavations comprise pottery fragments, bone, environmental and charcoal samples, and non-valuable metal items such as nails. Often many of these finds become unstable (i.e. they begin to disintegrate) when removed from the ground. All finds are the property of the landowner, however, it is Trust policy to recommend that all finds are donated to an appropriate museum where they can receive specialist treatment and study. Access to finds must be granted to the Trust for a reasonable period to allow for analysis and for study and publication as necessary. All finds would be treated according to advice provided within *First Aid for Finds* (Rescue 1999). Trust staff will undertake initial identification, but any additional advice would be sought from a wide range of consultants used by the Trust, including National Museums and Galleries of Wales at Cardiff and ARCUS at Sheffield.

Unexpected Discoveries: Treasure Trove

Treasure Trove law has been amended by the Treasure Act 1996. The following are Treasure under the Act:

- *Objects other than coins* any object other than a coin provided that it contains at least 10% gold or silver and is at least 300 years old when found.
- *Coins* all coins from the same find provided they are at least 300 years old when found (if the coins contain less than 10% gold or silver there must be at least 10. Any object or coin is part of the same find as another object or coin, if it is found in the same place as, or had previously been left together with, the other object. Finds may have become scattered since they were originally deposited in the ground. Single coin finds of gold or silver are not classed as treasure under the 1996 Treasure Act.
- *Associated objects* any object whatever it is made of, that is found in the same place as, or that had previously been together with, another object that is treasure.
- *Objects that would have been treasure trove* any object that would previously have been treasure trove, but does not fall within the specific categories given above. These objects have to be made substantially of gold or silver, they have to be buried with the intention of recovery and their owner or his heirs cannot be traced.

The following types of finds are not treasure:

- Objects whose owners can be traced.
- Unworked natural objects, including human and animal remains, even if they are found in association with treasure.
- Objects from the foreshore which are not wreck.

All finds of treasure must be reported to the coroner for the district within fourteen days of discovery or identification of the items. Items declared Treasure Trove become the property of the Crown, on whose behalf the National Museums and Galleries of Wales acts as advisor on technical matters, and may be the recipient body for the objects.

The National Museums and Galleries of Wales will decide whether they or any other museum may wish to acquire the object. If no museum wishes to acquire the object, then the Secretary of State will be able to disclaim it. When this happens, the coroner will notify the occupier and landowner that he intends to return the object to the finder after 28 days unless he receives no objection. If the coroner receives an objection, the find will be retained until the dispute has been settled.

### 3.3 Further Archaeological Works

**The identification of significant archaeological features during the the watching brief may necessitate the production of a new project design and the submission of new cost estimates to the contractor.**

The application of a further archaeological works design (FAWD) will be dependent on the initial identification, interpretation and examination of an archaeological feature and the establishment of a threshold of significance over which a FAWD might be triggered. This will include any features of demonstrable or likely prehistoric to medieval date and, for post-medieval features, any complex or unusual remains, including industrial activity. The requirement for an FAWD will be determined in conjunction with GAPS through established communication lines and the monitoring process.

The FAWD will be instigated through a GAT produced document that will include:

- feature specific methodologies;
- artefact and ecofact specialist requirements, with detail of appropriate sampling strategies and specialist analysis
- timings, staffing and resourcing.
- Additional costs

The FAWD document will need to be approved by the Gwynedd Archaeological Planning Service.

**This design does not include a methodology or cost for examination of, conservation of, or archiving of finds discovered during the watching brief, nor of any radiocarbon dates required, nor of examination of palaeoenvironmental samples. The need for these will be identified in the post-fieldwork programme (if required), and a new design will be issued for approval by the Gwynedd Archaeological Planning Service.**

### 3.4 Monitoring Arrangements

The Gwynedd Archaeological Planning Service will need to be informed of all start dates for the various elements of the scheme listed and of the subsequent progress and findings and enable discussion about the need or otherwise for FAWDs if features of potential archaeological significance are encountered.

### 3.5 Processing data, illustration, report and archiving

The level of post-excavation analysis and reporting for the purposes of the mitigation will be sufficient to establish the character, scale, date range, artefactual and palaeo-environmental potential and overall significance of the remains and will be based on the *Management of Archaeological Projects* (English Heritage, 1991).

Following the completion of the fieldwork, the data will be processed, final illustrations will be compiled and a report will be produced which will detail and synthesise the results. Location drawings and a sample of relevant photographs will be used to illustrate the reports.

## 4.0 PROCESSING DATA, ILLUSTRATION, REPORT AND ARCHIVING

Following completion of the watching brief as outlined above, a report will be produced incorporating the following:

1. Non-technical summary
2. Introduction
3. Project Design
4. Methods and techniques
5. Description of the results of the watching brief
6. Summary and conclusions
7. Bibliography of sources consulted.

Illustrations, including plans and photographs, will be incorporated within the report.

A full archive including plans, photographs, written material and any other material resulting from the project will be prepared.

All plans, photographs and descriptions will be labelled and cross-referenced, and lodged in an appropriate place (to be decided in consultation with the regional Historic Environment Record) within six months of the completion of the project. The watching report for the first phase of the development will be produced within one month of completion of the fieldwork and is expected to be delivered by the end of November 2014.

All digital data will be written to CD-ROM and stored with the paper archive.

- one or more copies (as required) will be sent to the client
- one or more copies (as required) will be sent to GAPS
- one or two copies (as required) sent to the Historic Environment Record Archaeologist for the area (HER, Gwynedd Archaeological Trust, Craig Beuno, Garth Road, Bangor, Gwynedd LL57 2RT);
- copies of all key digital files on optical media should be provided to GAPS and the Regional HER, including report, photographs, scans of maps etc.
- a copy of the report and/or digital files on optical media should be provided to the National Monument Record (Royal Commission on the Ancient and Historic Monuments of Wales, Aberystwyth, SY23 1NJ) dependant upon their requirements.

## **5.0 PERSONNEL**

The work will be managed by John Roberts, Principal Archaeologist GAT Contracts Section. The work will be undertaken by one of the Trust's Archaeologists experienced in the relevant skills/periods required. Full details of personnel involved, with *curricula vitae*, can be supplied upon request.

## 6.0 HEALTH AND SAFETY

The Trust subscribes to the SCAUM (Standing Conference of Archaeological Unit Managers) Health and Safety Policy as defined in **Health and Safety in Field Archaeology** (2006). Risks will be assessed prior to and during the work.

## **7.0 SOURCES CONSULTED**

Beech Development Ltd: Plan of the haul road, site compound and sales area

Standard and Guidance for Archaeological Watching Brief (Institute for Archaeologists, 1994, rev. 2001 & 2008)

## **Figure 1**

**Reproduction of Beech Development Ltd Plan of haul road, site compound and sales area.**



Figure 1: Plan of the proposed housing development off Narrow Lane, Llandudno Junction.

KEY:

- Haul Road
- Site Compound
- Sales Area

## **Figure 2**

**Location of medieval field boundary remains.**

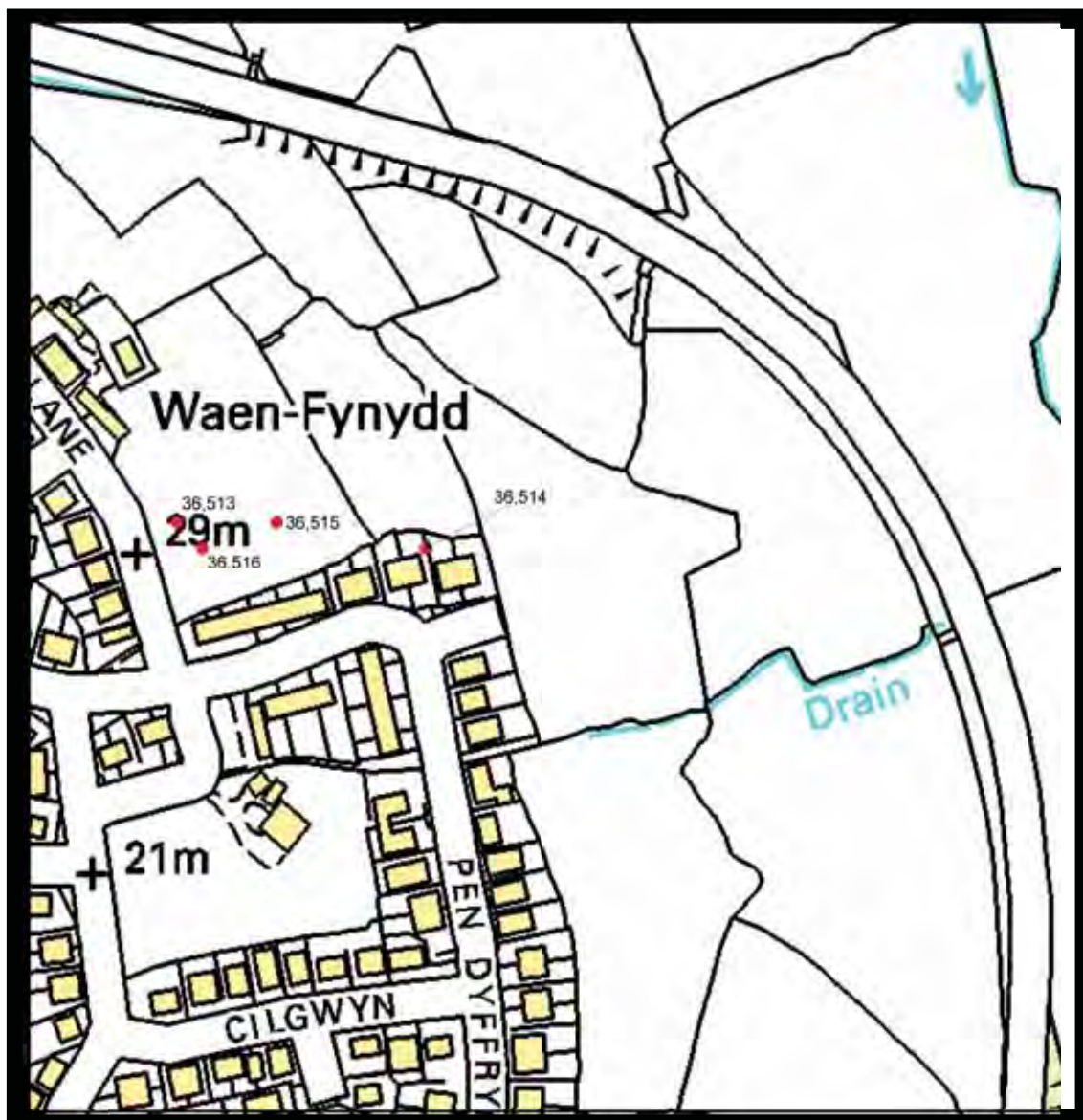


Figure 2 : Location of medieval field boundary remains.

© Crown copyright. All rights reserved. License number AL100020895

## **APPENDIX II**

### **Pottery Sherd Report for G2392**

## **Pottery sherds from Narrow Lane G2392**

Topsoil – 21 sherds in total. Combined weight of 390g

3 x sherds of Willow pattern, 1x base, 1x rim, and 1x body. All with outer pattern and plain beige glaze on inner side.

1 x very dark brown/black rim, glazed both sides with small pin-hole in fabric.

1 x beige glazed body sherd, glazed on both sides.

2 x rims, glazed on both sides but glaze on outer face badly deteriorated. Dark brown with beige pattern.

2 x body sherds, glazed on both sides, but the inner glaze on one of the sherds is badly deteriorated. Dark brown with beige pattern, as above rims.

1 x body sherd, the glaze is badly deteriorated on the inner side. Dark brown with beige pattern, as above rims and body sherds.

The following are a dark brown/black Buckley type pottery.

2 x rims, glazed on inner side, the outer also glazed but is badly deteriorated, thick pot.

2 x rims, glazed on inner and outer side, thick pot.

4 x body sherds, wavy shape on bodies and glazed on both sides, thick pot.

2 x body sherds, glazed on inner sides, not on outer unless badly deteriorated, thick pot.

1 x base, glazed on inner side but not on outer, unless very badly deteriorated or broken, quite a thick pot.

All the recovered pottery from the topsoil seems to be either mid/late Victorian to early 20<sup>th</sup> Century in date.



## **APPENDIX III**

### **Gwynedd Archaeological Trust photographic metadata**



File reference	Project name	Project phase	Project Phase	Description	Conte xts	View from	Scale (s)	Date	PLATES
G2392_ 001	Land off Narrow Lane	Site inspection	Phase 1 & 2	Western edge of site, off Narrow Lane, with bungalow.		S	N/A	10/09/14	
G2392_ 002	Land off Narrow Lane	Site inspection	Phase 1 & 2	Current entrance onto site, off Narrow Lane.		SW	N/A	10/09/14	
G2392_ 003	Land off Narrow Lane	Site inspection	Phase 1 & 2	Site road staked out in NW corner of the development.		SW	N/A	10/09/14	
G2392_ 004	Land off Narrow Lane	Site inspection	Phase 1 & 2	Continuation of the site road, staked out, in NW corner of development.		NW	N/A	10/09/14	
G2392_ 005	Land off Narrow Lane	Site inspection	Phase 1 & 2	Continuation of the site road, staked out, in the NE corner of the development.		SW	N/A	10/09/14	

File reference	Project name	Project phase	Project Phase	Description	Conte xts	View from	Scale (s)	Date	PLATES
G2392_ 006	Land off Narrow Lane	Site inspection	Phase 1 & 2	View of the site road, staked out, looking back toward Narrow Lane.		NE	N/A	10/09/14	
G2392_ 007	Land off Narrow Lane	Site inspection	Phase 1 & 2	Site/haul road in middle of the development.		N	N/A	10/09/14	
G2392_ 008	Land off Narrow Lane	Site inspection	Phase 1 & 2	Southwest corner of the development, road & plots staked out.		NE	N/A	10/09/14	
G2392_ 009	Land off Narrow Lane	Site inspection	Phase 1 & 2	General view of the site, looking upslope.		S	N/A	10/09/14	
G2392_ 010	Land off Narrow Lane	Site inspection	Phase 1 & 2	Existing farm yard, house & outbuilding that will become the site compound.		NW	N/A	10/09/14	
G2392_ 011	Land off Narrow Lane	Watching Brief	Phase 1 & 2	Topsoil strip of site road, with tractor and trailer being loaded.		SW	N/A	15/09/14	

File reference	Project name	Project phase	Project Phase	Description	Conte xts	View from	Scale (s)	Date	PLATES
G2392_ 012	Land off Narrow Lane	Watching Brief	Phase 1 & 2	Topsoil strip of site road, with dumper being loaded		N	N/A	15/09/14	
G2392_ 013	Land off Narrow Lane	Watching Brief	Phase 1 & 2	Topsoil strip of site road, 2 diggers and dumper.		NW	N/A	15/09/14	Plate 6
G2392_ 014	Land off Narrow Lane	Watching Brief	Phase 1 & 2	Area stripped at end of day 1.		SE	N/A	15/09/14	
G2392_ 015	Land off Narrow Lane	Watching Brief	Phase 1 & 2	Topsoil strip of site road, 1 digger and dumper.		NW	N/A	15/09/14	
G2392_ 016	Land off Narrow Lane	Watching Brief	Phase 1 & 2	Topsoil strip in 'L' shaped field.		N	N/A	16/09/14	
G2392_ 017	Land off Narrow Lane	Watching Brief	Phase 1 & 2	Topsoil strip of 'L' shaped field. Roughly 1/2 stripped, showing dry, dusty conditions.		E	N/A	16/09/14	

File reference	Project name	Project phase	Project Phase	Description	Conte xts	View from	Scale (s)	Date	PLATES
G2392_ 018	Land off Narrow Lane	Watching Brief	Phase 1 & 2	Removal of last of subsoil onto natural, along site road.		NE	N/A	16/09/14	
G2392_ 019	Land off Narrow Lane	Watching Brief	Phase 1 & 2	View of site road, after removal of topsoil and subsoil, looking downslope.		SE	N/A	16/09/14	
G2392_ 020	Land off Narrow Lane	Watching Brief	Phase 1 & 2	Removal of topsoil from site road opposite plots 12 and 13.		W	1x1m	17/09/14	
G2392_ 021	Land off Narrow Lane	Watching Brief	Phase 1 & 2	Removal of spoil from access road.		E	N/A	17/09/14	
G2392_ 022	Land off Narrow Lane	Watching Brief	Phase 1 & 2	Taking down of South edge of site plots.		E	1x1m	17/09/14	Plate 7
G2392_ 023	Land off Narrow Lane	Watching Brief	Phase 1 & 2	Building with pitched roof - External South face.		S	1x1m	17/09/14	Plate 1

File reference	Project name	Project phase	Project Phase	Description	Contexts	View from	Scale (s)	Date	PLATES
G2392_024	Land off Narrow Lane	Watching Brief	Phase 1 & 2	Building with pitched roof - External East face.		E	1x1m	17/09/14	
G2392_025	Land off Narrow Lane	Watching Brief	Phase 1 & 2	Building with pitched roof - External North face.		N	1x1m	17/09/14	
G2392_026	Land off Narrow Lane	Watching Brief	Phase 1 & 2	Building with pitched roof - External West face.		W	1x1m	17/09/14	
G2392_027	Land off Narrow Lane	Watching Brief	Phase 1 & 2	Building with pitched roof - Internal North face. Room 1.		S	1x1m	17/09/14	
G2392_028	Land off Narrow Lane	Watching Brief	Phase 1 & 2	Building with pitched roof - Internal South face. Room 1.		N	1x1m	17/09/14	Plate 2
G2392_029	Land off Narrow Lane	Watching Brief	Phase 1 & 2	Building with pitched roof - Internal West face. Room 1.		E	1x1m	17/09/14	

File reference	Project name	Project phase	Project Phase	Description	Conte xts	View from	Scale (s)	Date	PLATES
G2392_ 030	Land off Narrow Lane	Watching Brief	Phase 1 & 2	Building with pitched roof - Internal East face. Room 1.		W	1x1m	17/09/14	
G2392_ 031	Land off Narrow Lane	Watching Brief	Phase 1 & 2	Building with pitched roof - Internal West face. Room 2.		E	1x1m	17/09/14	Plate 3
G2392_ 032	Land off Narrow Lane	Watching Brief	Phase 1 & 2	Building with pitched roof - Internal North face. Room 2.		S	1x1m	17/09/14	
G2392_ 033	Land off Narrow Lane	Watching Brief	Phase 1 & 2	Building with pitched roof - Internal East face. Room 2.		W	1x1m	17/09/14	
G2392_ 034	Land off Narrow Lane	Watching Brief	Phase 1 & 2	Building with pitched roof - Internal South face. Room 2.		N	1x1m	17/09/14	
G2392_ 035	Land off Narrow Lane	Watching Brief	Phase 1 & 2	Topsoil strip - house plots in 'L' shaped field.		N	N/A	17/09/14	

File reference	Project name	Project phase	Project Phase	Description	Conte xts	View from	Scale (s)	Date	PLATES
G2392_ 036	Land off Narrow Lane	Watching Brief	Phase 1 & 2	Topsoil strip - house plots in 'L' shaped field.		E	N/A	17/09/14	
G2392_ 037	Land off Narrow Lane	Watching Brief	Phase 1 & 2	Building with single pitched roof - External West face.		W	1x1m	17/09/14	Plate 4
G2392_ 038	Land off Narrow Lane	Watching Brief	Phase 1 & 2	Building with single pitched roof - External North face.		N	1x1m	17/09/14	
G2392_ 039	Land off Narrow Lane	Watching Brief	Phase 1 & 2	Building with single pitched roof - External South face.		S	1x1m	17/09/14	
G2392_ 040	Land off Narrow Lane	Watching Brief	Phase 1 & 2	Building with single pitched roof - Internal arrangements - Southern end.		W	1x1m	17/09/14	Plate 5
G2392_ 041	Land off Narrow Lane	Watching Brief	Phase 1 & 2	Building with single pitched roof - Internal arrangements - Northern end.		W	1x1m	17/09/14	

File reference	Project name	Project phase	Project Phase	Description	Conte xts	View from	Scale (s)	Date	PLATES
G2392_ 042	Land off Narrow Lane	Watching Brief	Phase 1 & 2	Building with single pitched roof - Internal arrangements - Northern end.		S	1x1m	17/09/14	
G2392_ 043	Land off Narrow Lane	Watching Brief	Phase 1 & 2	Building with single pitched roof - Internal arrangements - Roof space - Northern end		S	1x1m	17/09/14	
G2392_ 044	Land off Narrow Lane	Watching Brief	Phase 1 & 2	Hole created in hedge to East of Waen Fynydd Farm House		N	1x1m	17/09/14	
G2392_ 045	Land off Narrow Lane	Watching Brief	Phase 1 & 2	Hole created in hedge to East of Waen Fynydd Farm House.		W	1x1m	17/09/14	

File reference	Project name	Project phase	Project Phase	Description	Conte xts	View from	Scale (s)	Date	PLATES
G2392_ 046	Land off Narrow Lane	Watching Brief	Phase 1 & 2	Topsoil strip in 'L' shaped field towards farm outbuildings.		E	N/A	17/09/14	
G2392_ 047	Land off Narrow Lane	Watching Brief	Phase 1 & 2	Topsoil strip in 'L' shaped field towards farm outbuildings - gravel surface.		E	1x1m	17/09/14	
G2392_ 048	Land off Narrow Lane	Watching Brief	Phase 1 & 2	Land Drain running from west to east across site.		W	1x1m	18/09/14	
G2392_ 049	Land off Narrow Lane	Watching Brief	Phase 1 & 2	Subsoil strip - south western corner of site, parallel with Narrow Lane.		E	1x1m	18/09/14	

File reference	Project name	Project phase	Project Phase	Description	Conte xts	View from	Scale (s)	Date	PLATES
G2392_ 050	Land off Narrow Lane	Watching Brief	Phase 1 & 2	Southern end of surface water drain from Waen Fynydd Farm house to GAT PRN 36,514 - Ditch south of Waen Fynydd.		W	1x1m	18/09/14	
G2392_ 051	Land off Narrow Lane	Watching Brief	Phase 1 & 2	Topsoil strip continuing working south to north.		E	N/A	18/09/14	
G2392_ 052	Land off Narrow Lane	Watching Brief	Phase 1 & 2	Topsoil strip continuing south to north with two 13 tonne 360s and 2 6 tonne dumpers.		S	N/A	18/09/14	
G2392_ 053	Land off Narrow Lane	Watching Brief	Phase 1 & 2	Topsoil strip continuing south to north.		S	N/A	18/09/14	
G2392_ 054	Land off Narrow Lane	Watching Brief	Phase 1 & 2	Topsoil strip continuing south to north.		W	N/A	18/09/14	

File reference	Project name	Project phase	Project Phase	Description	Contexts	View from	Scale (s)	Date	PLATES
G2392_055	Land off Narrow Lane	Watching Brief	Phase 1 & 2	Topsoil strip with subsoil strip in foreground.		W	N/A	18/09/14	
G2392_056	Land off Narrow Lane	Watching Brief	Phase 1 & 2	Stripped area on Narrow Lane (west) side of development.		S	N/A	18/09/14	
G2392_057	Land off Narrow Lane	Watching Brief	Phase 1 & 2	Stripped area on Narrow Lane (west) side of development.		N	N/A	18/09/14	
G2392_058	Land off Narrow Lane	Watching Brief	Phase 1 & 2	Subsoil strip on centre of south field containing development.		S	N/A	19/09/14	
G2392_059	Land off Narrow Lane	Watching Brief	Phase 1 & 2	GAT PRN 36,514 - Ditch at south side of development level with extant field boundary.		W	1x1m	19/09/14	Plate 15

File reference	Project name	Project phase	Project Phase	Description	Conte xts	View from	Scale (s)	Date	PLATES
G2392_ 060	Land off Narrow Lane	Watching Brief	Phase 1 & 2	GAT PRN 36,514 - Ditch at south side of development east of extant field boundary.		W	1x1m	19/09/14	
G2392_ 061	Land off Narrow Lane	Watching Brief	Phase 1 & 2	GAT PRN 36,514 - Ditch at south side of development east of extant field boundary.		E	1x1m	19/09/14	
G2392_ 062	Land off Narrow Lane	Watching Brief	Phase 1 & 2	GAT PRN 36,514 - Ditch at south side of development west of extant field boundary.		W	1x1m	19/09/14	Plate 17
G2392_ 063	Land off Narrow Lane	Watching Brief	Phase 1 & 2	Glacial erratic boulder being removed from drift geology.		S	N/A	19/09/14	

File reference	Project name	Project phase	Project Phase	Description	Conte xts	View from	Scale (s)	Date	PLATES
G2392_ 064	Land off Narrow Lane	Watching Brief	Phase 1 & 2	Glacial erratic boulder removed from drift geology.		W	1x1m	19/09/14	
G2392_ 065	Land off Narrow Lane	Watching Brief	Phase 1 & 2	Stripped area to south of Waen Fynydd Farm house.		S	N/A	19/09/14	
G2392_ 066	Land off Narrow Lane	Watching Brief	Phase 1 & 2	Line of surface water tile drain from Waen Fynydd Farm house into GAT PRN 36,514 - ditch south of Waen Fynydd.		S	1x1m	19/09/14	
G2392_ 067	Land off Narrow Lane	Watching Brief	Phase 1 & 2	Line of surface water tile drain from Waen Fynydd Farm house into GAT PRN 36,514 - ditch south of Waen Fynydd.		N	1x1m	19/09/14	

File reference	Project name	Project phase	Project Phase	Description	Conte xts	View from	Scale (s)	Date	PLATES
G2392_068	Land off Narrow Lane	Watching Brief	Phase 1 & 2	Hole made in north-south field boundary to east of stripped area.		W	1x1m	22/09/14	
G2392_069	Land off Narrow Lane	Watching Brief	Phase 1 & 2	Hole made in north-south field boundary to east of stripped area, ditch on west side.		N	1x1m	22/09/14	
G2392_070	Land off Narrow Lane	Watching Brief	Phase 1 & 2	Hole made in east-west field boundary to east of stripped area.		S	1x1m	22/09/14	
G2392_071	Land off Narrow Lane	Watching Brief	Phase 1 & 2	Hole made in east-west field boundary to east of stripped area.		W	1x1m	22/09/14	
G2392_072	Land off Narrow Lane	Watching Brief	Phase 1 & 2	View towards GAT PRN 36,514 - Ditch south of Waen Fynydd from northern end of eastern field.		N	N/A	22/09/14	Plate 17

File reference	Project name	Project phase	Project Phase	Description	Contexts	View from	Scale (s)	Date	PLATES
G2392_073	Land off Narrow Lane	Watching Brief	Phase 1 & 2	Waen Fynydd Farm house - south elevation.		S	1x1m	22/09/14	
G2392_074	Land off Narrow Lane	Watching Brief	Phase 1 & 2	Waen Fynydd Farm house - east elevation.		E	1x1m	22/09/14	
G2392_075	Land off Narrow Lane	Watching Brief	Phase 1 & 2	Subsoil strip continuing south to north.		S	N/A	22/09/14	
G2392_076	Land off Narrow Lane	Watching Brief	Phase 1 & 2	Subsoil strip immediately south of Waen Fynydd Farm house.		S	N/A	22/09/14	
G2392_077	Land off Narrow Lane	Watching Brief	Phase 1 & 2	Subsoil strip immediately east of Waen Fynydd Farm house.		W	N/A	22/09/14	
G2392_078	Land off Narrow Lane	Watching Brief	Phase 1 & 2	Subsoil strip immediately east of Waen Fynydd Farm house.		N	N/A	22/09/14	

File reference	Project name	Project phase	Project Phase	Description	Contexts	View from	Scale (s)	Date	PLATES
G2392_079	Land off Narrow Lane	Watching Brief	Phase 1 & 2	Topsoil strip south east corner of south-west field.		S	N/A	22/09/14	
G2392_080	Land off Narrow Lane	Watching Brief	Phase 1 & 2	Topsoil strip south east corner of south-west field.		S	N/A	22/09/14	
G2392_081	Land off Narrow Lane	Watching Brief	Phase 1 & 2	Photograph showing smears of ceramic, coal and chalk on clay surface.		S	1x1m	22/09/14	
G2392_082	Land off Narrow Lane	Watching Brief	Phase 1 & 2	Line of field drain stripped.		E	1x1m	22/09/14	
G2392_083	Land off Narrow Lane	Watching Brief	Phase 1 & 2	Topsoil strip of house plots 56-60.		W	N/A	23/09/14	
G2392_084	Land off Narrow Lane	Watching Brief	Phase 1 & 2	Area of site road and approximate area of house plots 56-60.		NW	N/A	23/09/14	

File reference	Project name	Project phase	Project Phase	Description	Contexts	View from	Scale (s)	Date	PLATES
G2392_085	Land off Narrow Lane	Watching Brief	Phase 1 & 2	Subsoil being removed at south western edge of site, beside Narrow Lane.		SE	N/A	23/09/14	
G2392_086	Land off Narrow Lane	Watching Brief	Phase 1 & 2	Subsoil strip working south to north of western half of south-west field.		S	N/A	24/04/14	
G2392_087	Land off Narrow Lane	Watching Brief	Phase 1 & 2	Line of surface water drain from Waen Fynydd Farm house to GAT PRN 36,514 - Ditch south of Waen Fynydd.		S	1x1m	24/09/14	

File reference	Project name	Project phase	Project Phase	Description	Conte xts	View from	Scale (s)	Date	PLATES
G2392_ 088	Land off Narrow Lane	Watching Brief	Phase 1 & 2	Line of surface water drain from Waen Fynydd Farm house to GAT PRN 36,514 - Ditch south of Waen Fynydd.		S	1x1m	24/09/14	
G2392_ 089	Land off Narrow Lane	Watching Brief	Phase 1 & 2	Line of surface water drain from Waen Fynydd Farm house to GAT PRN 36,514 - Ditch south of Waen Fynydd.		S	1x1m	24/09/14	
G2392_ 090	Land off Narrow Lane	Watching Brief	Phase 1 & 2	Subsoil strip immediately south of Waen Fynydd Farm house.		W	1x1m	24/09/14	
G2392_ 091	Land off Narrow Lane	Watching Brief	Phase 1 & 2	Stripped area to south of Waen Fynydd Farm house.		S	1x1m	24/09/14	

File reference	Project name	Project phase	Project Phase	Description	Conte xts	View from	Scale (s)	Date	PLATES
G2392_092	Land off Narrow Lane	Watching Brief	Phase 1 & 2	Subsoil strip south of Waen Fynydd Farm house.		S	N/A	24/09/14	
G2392_093	Land off Narrow Lane	Watching Brief	Phase 1 & 2	Bund marking limit of stripped area with line of field drain in foreground		W	1x1m	24/09/14	
G2392_094	Land off Narrow Lane	Watching Brief	Phase 1 & 2	Area completely stripped of subsoil south of Waen Fynydd Farm house.		S	N/A	24/09/14	
G2392_095	Land off Narrow Lane	Watching Brief	Phase 1 & 2	General shot of area to be stripped		SE	N/A	17/10/14	
G2392_096	Land off Narrow Lane	Watching Brief	Phase 1 & 2	Shot showing foundations of building		SW	N/A	17/10/14	
G2392_097	Land off Narrow Lane	Watching Brief	Phase 1 & 2	Stripping in progress		E	N/A	17/10/14	
G2392_098	Land off Narrow	Watching Brief	Phase 1 & 2	Stripping in progress		S	N/A	17/10/14	

File reference	Project name	Project phase	Project Phase	Description	Conte xts	View from	Scale (s)	Date	PLATES
	Lane								
G2392_ 099	Land off Narrow Lane	Watching Brief	Phase 1 & 2	Stripping in progress		WNW	N/A	17/10/14	
G2392_ 100	Land off Narrow Lane	Watching Brief	Phase 1 & 2	General shot of stripping in progress		ESE	N/A	11/11/14	
G2392_ 101	Land off Narrow Lane	Watching Brief	Phase 1 & 2	Ground Investigation Pit		SE	1x1m	11/11/14	
G2392_ 102	Land off Narrow Lane	Watching Brief	Phase 1 & 2	Pit containing burnt stone	[03], (04)	ENE	1x1m	11/11/14	Plate 12
G2392_ 103	Land off Narrow Lane	Watching Brief	Phase 1 & 2	Pit containing burnt stone, half sectioned	[03], (04)	ENE	1x1m	11/11/14	
G2392_ 104	Land off Narrow Lane	Watching Brief	Phase 1 & 2	Pit containing burnt stone, half sectioned	[03], (04)	ENE	1x1m	11/11/14	Plate 13
G2392_ 105	Land off Narrow Lane	Watching Brief	Phase 1 & 2	Pit containing burnt stone, fully excavated	[03]	ENE	1x1m	11/11/14	
G2392_ 106	Land off Narrow Lane	Watching Brief	Phase 1 & 2	Pit containing burnt stone, fully excavated	[03]	ENE	1x1m	11/11/14	Plate 14

File reference	Project name	Project phase	Project Phase	Description	Conte xts	View from	Scale (s)	Date	PLATES
G2392_ 107	Land off Narrow Lane	Watching Brief	Phase 1 & 2	General end of day shot		NNE	N/A	11/11/14	Plate 11
G2392_ 108	Land off Narrow Lane	Watching Brief	Phase 1 & 2	Photo of concrete slab foundation of house, west of Narrow Lane		NW	1m rod	20/11/14	
G2392_ 109	Land off Narrow Lane	Watching Brief	Phase 1 & 2	W face of remnants of house with brick façade.		W	1m rod	20/11/14	
G2392_ 110	Land off Narrow Lane	Watching Brief	Phase 1 & 2	View of concrete slab of foundation of the house		SE	1m rod	20/11/14	
G2392_ 111	Land off Narrow Lane	Watching Brief	Phase 1 & 2	Location shot of the concrete foundation (site office in background)		S	1m rod	20/11/14	Plate 18
G2392_ 112	Land off Narrow Lane	Watching Brief	Phase 1 & 2	Topsoil strip of house plot 35		N	1m rod	20/11/14	

File reference	Project name	Project phase	Project Phase	Description	Conte xts	View from	Scale (s)	Date	PLATES
G2392_ 113	Land off Narrow Lane	Watching Brief	Phase 1 & 2	Topsoil strip of house plots 35 & 36 (2 diggers)		N	None	20/11/14	
G2392_ 114	Land off Narrow Lane	Watching Brief	Phase 1 & 2	House plots 35 & 36 stripped.		S	1m rod	20/11/14	
G2392_ 115	Land off Narrow Lane	Watching Brief	Phase 1 & 2	Top/subsoil strip of house plots 53-55.		S	None	20/11/14	
G2392_ 116	Land off Narrow Lane	Watching Brief	Phase 1 & 2	Top/subsoil strip of house plots 53-55.		E	None	20/11/14	
G2392_ 117	Land off Narrow Lane	Watching Brief	Phase 1 & 2	Plots 53-55 stripped		W	1m rod	20/11/14	
G2392_ 118	Land off Narrow Lane	Watching Brief	Phase 1 & 2	Plots 53-55 stripped		S	None	20/11/14	
G2392_ 119	Land off Narrow Lane	Watching Brief	Phase 1 & 2	Topsoil/subsoil strip to the north and east of Plots 53-55		SSE	-	03/12/14	
G2392_ 120	Land off Narrow Lane	Watching Brief	Phase 1 & 2	Topsoil/subsoil strip to the north and east of Plots 53-55		W	-	03/12/14	

File reference	Project name	Project phase	Project Phase	Description	Conte xts	View from	Scale (s)	Date	PLATES
G2392_ 121	Land off Narrow Lane	Watching Brief	Phase 1 & 2	Topsoil/subsoil strip to the north and east of Plots 53-55		W	-	03/12/14	
G2392_ 122	Land off Narrow Lane	Watching Brief	Phase 1 & 2	Foundation trenches for Plots 53-55		SSE	1x1m	03/12/14	
G2392_ 123	Land off Narrow Lane	Watching Brief	Phase 1 & 2	Foundation trenches for Plots 53-55		W	-	03/12/14	
G2392_ 124	Land off Narrow Lane	Watching Brief	Phase 1 & 2	Foundation trenches for Plots 53-55		WSW	1x1m	03/12/14	
G2392_ 125	Land off Narrow Lane	Watching Brief	Phase 1 & 2	Foundation trenches for Plots 53-55		W	1x1m	03/12/14	
G2392_ 126	Land off Narrow Lane	Watching Brief	Phase 1 & 2	Foundation trenches for Plots 53-55		E	1x1m	03/12/14	
G2392_ 127	Land off Narrow Lane	Watching Brief	Phase 1 & 2	Foundation trenches for Plots 53-55		E	1x1m	03/12/14	Plate 10
G2392_ 128	Land off Narrow Lane	Watching Brief	Phase 1 & 2	Topsoil/subsoil strip to the north and east of Plots 53-55		W	-	03/12/14	Plate 8

File reference	Project name	Project phase	Project Phase	Description	Conte xts	View from	Scale (s)	Date	PLATES
G2392_ 129	Land off Narrow Lane	Watching Brief	Phase 1 & 2	Completed area to the north of Plots 53-55		W	1x1m	03/12/14	
G2392_ 130	Land off Narrow Lane	Watching Brief	Phase 1 & 2	Completed area to the east of Plots 53-55, Plots 49-52		SE	-	04/12/14	
G2392_ 131	Land off Narrow Lane	Watching Brief	Phase 1 & 2	Completed area to the east of Plots 53-55, Plots 49-52		SW	-	04/12/14	
G2392_ 132	Land off Narrow Lane	Watching Brief	Phase 1 & 2	Completed area to the east of Plots 53-55, Plots 49-52		NNW	-	04/12/14	
G2392_ 133	Land off Narrow Lane	Watching Brief	Phase 1 & 2	Topsoil stripping of plots 32-34.		N	1x1m	09/12/14	
G2392_ 134	Land off Narrow Lane	Watching Brief	Phase 1 & 2	Topsoil stripping of plots 32-34.		S	-	09/12/14	
G2392_ 135	Land off Narrow Lane	Watching Brief	Phase 1 & 2	Topsoil stripping of plots 32-34.		W	-	09/12/14	
G2392_ 136	Land off Narrow Lane	Watching Brief	Phase 1 & 2	Topsoil stripping of plots 32-34.		W	-	09/12/14	
G2392_ 137	Land off	Watching Brief	Phase 1 & 2	Topsoil stripping of		S	1x1m	09/12/14	

File reference	Project name	Project phase	Project Phase	Description	Conte xts	View from	Scale (s)	Date	PLATES
	Narrow Lane			plots 32-34.					
G2392_ 138	Land off Narrow Lane	Watching Brief	Phase 1 & 2	Topsoil stripping of plots 37-44.		SW	1x1m	09/12/14	
G2392_ 139	Land off Narrow Lane	Watching Brief	Phase 1 & 2	Topsoil stripping of plots 37-44.		N	-	09/12/14	
G2392_ 140	Land off Narrow Lane	Watching Brief	Phase 1 & 2	Topsoil stripping of plots 37-44.		SW	1x1m	09/12/14	
G2392_ 141	Land off Narrow Lane	Watching Brief	Phase 1 & 2	Subsoil stripping of plots 32-34.		E	1x1m	09/12/14	
G2392_ 142	Land off Narrow Lane	Watching Brief	Phase 1 & 2	Subsoil stripping of plots 32-34.		E	1x1m	09/12/14	
G2392_ 143	Land off Narrow Lane	Watching Brief	Phase 1 & 2	Subsoil stripping of plots 32-34.		E	1x1m	09/12/14	Plate 9
G2392_ 144	Land off Narrow Lane	Watching Brief	Phase 1 & 2	Subsoil stripping of plots 32-34.		W	1x1n	09/12/14	
G2392_ 145	Land off Narrow Lane	Watching Brief	Phase 1 & 2	Topsoil stripping of plots 37-44.		S	1x1m	09/12/14	

File reference	Project name	Project phase	Project Phase	Description	Conte xts	View from	Scale (s)	Date	PLATES
G2392_ 146	Land off Narrow Lane	Watching Brief	Phase 1 & 2	Topsoil stripping of plots 38-39.		SW	-	07/01/15	
G2392_ 147	Land off Narrow Lane	Watching Brief	Phase 1 & 2	Topsoil stripping of plots 38-39.		NW	-	07/01/15	
G2392_ 148	Land off Narrow Lane	Watching Brief	Phase 1 & 2	Topsoil stripping of plots 38-39.		SW	-	07/01/15	
G2392_ 149	Land off Narrow Lane	Watching Brief	Phase 1 & 2	Topsoil stripping of plots 38-41 inc.		SE	1x1m	07/01/15	
G2392_ 150	Land off Narrow Lane	Watching Brief	Phase 1 & 2	Topsoil stripping of plots 38-41 inc.		SE\$	1x1m	07/01/15	
G2392_ 151	Land off Narrow Lane	Watching Brief	Phase 1 & 2	Topsoil stripping of plots 29-31.		NW	-	07/01/15	
G2392_ 152	Land off Narrow Lane	Watching Brief	Phase 1 & 2	Topsoil stripping of plots 29-31.		NW	1x1m	07/01/15	
G2392_ 153	Land off Narrow Lane	Watching Brief	Phase 1 & 2	Topsoil stripping of plots 29-31.		W	1x1m	07/01/15	

File reference	Project name	Project phase	Project Phase	Description	Conte xts	View from	Scale (s)	Date	PLATES
G2392_ 154	Land off Narrow Lane	Watching Brief	Phase 1 & 2	General pre-ex location shot	-	E	-	10/04/15	
G2392_ 155	Land off Narrow Lane	Watching Brief	Phase 1 & 2	General working shot - Topsoiling	-	SE	-	10/04/15	
G2392_ 156	Land off Narrow Lane	Watching Brief	Phase 1 & 2	General working shot - Topsoiling	-	N	-	10/04/15	
G2392_ 157	Land off Narrow Lane	Watching Brief	Phase 1 & 2	General working shot - Topsoiling	-	SW	-	10/04/15	
G2392_ 158	Land off Narrow Lane	Watching Brief	Phase 1 & 2	General working shot - Topsoiling	-	SW	-	10/04/15	
G2392_ 159	Land off Narrow Lane	Watching Brief	Phase 1 & 2	Natural within trench cut for tank! - NE-SW section, showing test pit.	-	NE	1x1m	10/04/15	
G2392_ 160	Land off Narrow Lane	Watching Brief	Phase 1 & 2	Natural within trench cut for tank! - NW-SE section	-	NW	1x1m	10/04/15	
G2392_ 161	Land off Narrow	Watching Brief	Phase 1 & 2	General shot of the two short trenches	-	W	1x1m	10/04/15	

File reference	Project name	Project phase	Project Phase	Description	Conte xts	View from	Scale (s)	Date	PLATES
	Lane								
G2392_ 162	Land off Narrow Lane	Watching Brief	Phase 1 & 2	General shot of partially sub- soiled area	-	N	1x1m	10/04/15	
G2392_ 163	Land off Narrow Lane	Watching Brief	Phase 1 & 2	General shot of partially sub- soiled area	-	N	1x1m	10/04/15	
G2392_ 164	Land off Narrow Lane	Watching Brief	Phase 1 & 2	General shot of partially sub- soiled area	-	SE	1x1m	10/04/15	
G2392_ 165	Land off Narrow Lane	Watching Brief	Phase 1 & 2	General shot of partially sub- soiled area	-	SE	1x1m	10/04/15	
G2392_ 166	Land off Narrow Lane	Watching Brief	Phase 1 & 2Phase 1 & 2	General shot of topsoil strip in NW corner of the site (office block area)	-	ESE	1x1m	30/07/15	
G2392_ 167	Land off Narrow Lane	Watching Brief	Phase 1 & 2	General shot of topsoil strip in NW corner of the site (office block area)	-	NW	1x1m	30/07/15	

File reference	Project name	Project phase	Project Phase	Description	Conte xts	View from	Scale (s)	Date	PLATES
G2392_ 168	Land off Narrow Lane	Watching Brief	Phase 1 & 2	View of section showing the topsoil strip, depth of topsoil and clay subsoil	-	SW	1x1m	30/07/15	
G2392_ 169	Land off Narrow Lane	Watching Brief	Phase 1 & 2	General shot of topsoil strip in NW corner of the site (office block area)	-	SE	1x1m	30/07/15	
G2392_ 170	Land off Narrow Lane	Watching Brief	Phase 1 & 2	View of east-west agricultural drainage ditch filled with small rubble fieldstone	-	E	1x1m	30/07/15	
G2392_ 171	Land off Narrow Lane	Watching Brief	Phase 1 & 2	General shot of topsoil strip in NW corner of the site (office block area)	-	SE	1x1m	30/07/15	
G2392_ 172	Land off Narrow Lane	Watching Brief	Phase 1 & 2	Area NNW of houses A3 and DH2- General topsoil	-	NE	1x1m	30/07/15	
G2392_ 173	Land off Narrow Lane	Watching Brief	Phase 1 & 2	Area NNW of houses A3 and DH2- General topsoil	-	S	1x1m	30/07/15	

File reference	Project name	Project phase	Project Phase	Description	Conte xts	View from	Scale (s)	Date	PLATES
G2392_ 174	Land off Narrow Lane	Watching Brief	Phase 1 & 2	Area NNW of houses A3 and DH2- General topsoil	-	N	1x1m	30/07/15	
G2392_ 175	Land off Narrow Lane	Watching Brief	Phase 1 & 2	Area NNW of houses A3 and DH2- General topsoil	-	N	1x1m	30/07/15	
G2392_ 176	Land off Narrow Lane	Watching Brief	Phase 1 & 2	View of surface stripping after spoil heap moving in NW area	-	N	1x1m	30/07/15	
G2392_ 177	Land off Narrow Lane	Watching Brief	Phase 1 & 2	View of surface stripping after spoil heap moving in NW area		ESE	1x1m	30/07/15	

## **APPENDIX IV**

### **Reproduction of CFA Report for G2392**



# CFA Archaeology Ltd

*archaeological consultants*

*Advice on Archaeology & Planning*

*Environmental Impact Assessment*

*Interpretation, Design & Display*

*Finds/ Environmental Analysis*

*Field Evaluation & Excavation*

*Historic Building Recording*


*Site & Landscape Survey*


*Geophysical Survey*

**G2292**

**Sample Assessment**

**Report No. 3258**

 0131 273 4380

 0131 273 4381

 [info@cfa-archaeology.co.uk](mailto:info@cfa-archaeology.co.uk)

 [www.cfa-archaeology.co.uk](http://www.cfa-archaeology.co.uk)

**CFA ARCHAEOLOGY LTD**

The Old Engine House  
Eskmills Business Park  
Musselburgh  
East Lothian  
EH21 7PQ

Tel: 0131 273 4380  
Fax: 0131 273 4381  
email: [info@cfa-archaeology.co.uk](mailto:info@cfa-archaeology.co.uk)  
web: [www.cfa-archaeology.co.uk](http://www.cfa-archaeology.co.uk)

Author	Mhairi Hastie BSc MSc FSA Scot MCIfA
Editor	Melanie Johnson MA PhD FSA Scot MCIfA
Commissioned by	Gwynedd Archaeological Trust
Date issued	February 2015
Version	0

This document has been prepared in accordance with CFA Archaeology Ltd  
standard operating procedures.

**G2292 - Sample Assessment**

**Report No: 3258**

## 1. INTRODUCTION

A bulk soil sample, 15 litres in volume, was retained from a pit [003] for palaeoenvironmental analysis. The soil sample was provided to CFA Archaeology Ltd (CFA) in January 2015 for processing and assessment.

## 2. METHODOLOGY

The sample was processed through a Siraf style flotation tank.

The floating material (flot) was collected in a 250µm sieve then, once dried, scanned using a binocular microscope (x10-x100 magnifications) and any carbonised plant remains extracted and preliminary identified. Identifications were made with reference to the modern collection of CFA and standard seed atlases. Plant remains were stored in either plastic finds bags or plastic specimen tubes.

The material remaining in the sieve tank (retent) was washed through a 1mm mesh and air dried. The retent was then scanned for any archaeological significant material. The quantity and quality of any artefacts and small finds present were noted and the remains stored in plastic find bags.

## 3. RESULTS

The results are summarised in Table 1.

**Cereal grain:** The fill of the pit contained a small assemblage of carbonised cereal grains. Preliminary identification of the grain indicates that both barley and wheat are present. The grains are generally abraded and in most cases the cereals can only be identified to species level: however, one of the wheat grains shows a distinctive dorsal ridge suggestive of hulled wheat (*Triticum monococcum/dicccum*). The recovery of carbonised cereal grain, albeit in small amounts from the pit, would suggest that some food preparation was taking place within the vicinity. However, the quantity of grain recovered does not allow for detailed discussion. The grains are not sufficiently preserved for AMS dating.

**Wood charcoal:** The sample consisted principally of wood charcoal. Initial identifications of the wood species present suggest that statistically hazel dominates the assemblage, followed by lesser amounts of *Quercus* sp. (oak) and *Betula* sp. (birch). A fragment of *Corylus avellana* (hazel), small diameter round wood, was identified as being suitable for AMS dating.

No other plant remains or small finds/artefacts were present in the sample.

**Table 1. Sample composition**

**Key:** + = rare (1-10 items); occasional (11-50 items); common (51-100 items) and abundant (101+ items)

Sample No.	Fill No.	Cut No.	Feature type	Vol of Flot	% of flot sorted	Cereal grains			Charcoal	
						Qty	Identification	Preservation	Qty	Identification
01	004	003	PIT	500ml	100%	++	Hulled wheat - (einkorn/emmer) Barley indet	Abraded	++++	Hazel ( <i>Corylus avellana</i> ) Oak ( <i>Quercus</i> sp.) Birch ( <i>Betula</i> sp.)

#### 4. RECOMMENDATIONS

No further work is recommended.

## **APPENDIX V**

### **Reproduction of SUERC report for G2392**



## RADIOCARBON DATING CERTIFICATE

23 March 2015

**Laboratory Code** SUERC-58848 (GU36816)

**Submitter** Laura Wilson Parry  
Gwynedd Archaeological Trust  
Craig Beuno  
Garth Road  
Bangor, Gwynedd, LL57 2RT

**Site Reference** G2392 Narrow Lane, Llandudno

**Context Reference** 4

**Sample Reference** 1

**Material** Hazel : *Corylus avellana*

**$\delta^{13}\text{C}$  relative to VPDB** -28.0 ‰

**Radiocarbon Age BP** 3319  $\pm$  30

**N.B.** The above  $^{14}\text{C}$  age is quoted in conventional years BP (before 1950 AD). The error, which is expressed at the one sigma level of confidence, includes components from the counting statistics on the sample, modern reference standard and blank and the random machine error.

The calibrated age ranges are determined from the University of Oxford Radiocarbon Accelerator Unit calibration program (OxCal4).

Samples with a SUERC coding are measured at the Scottish Universities Environmental Research Centre AMS Facility and should be quoted as such in any reports within the scientific literature. Any questions directed to the Radiocarbon Laboratory should also quote the GU coding given in parentheses after the SUERC code. The contact details for the laboratory are email [Gordon.Cook@glasgow.ac.uk](mailto:Gordon.Cook@glasgow.ac.uk) or telephone 01355 270136 direct line.

Conventional age and calibration age ranges calculated by :- E. Dunbar

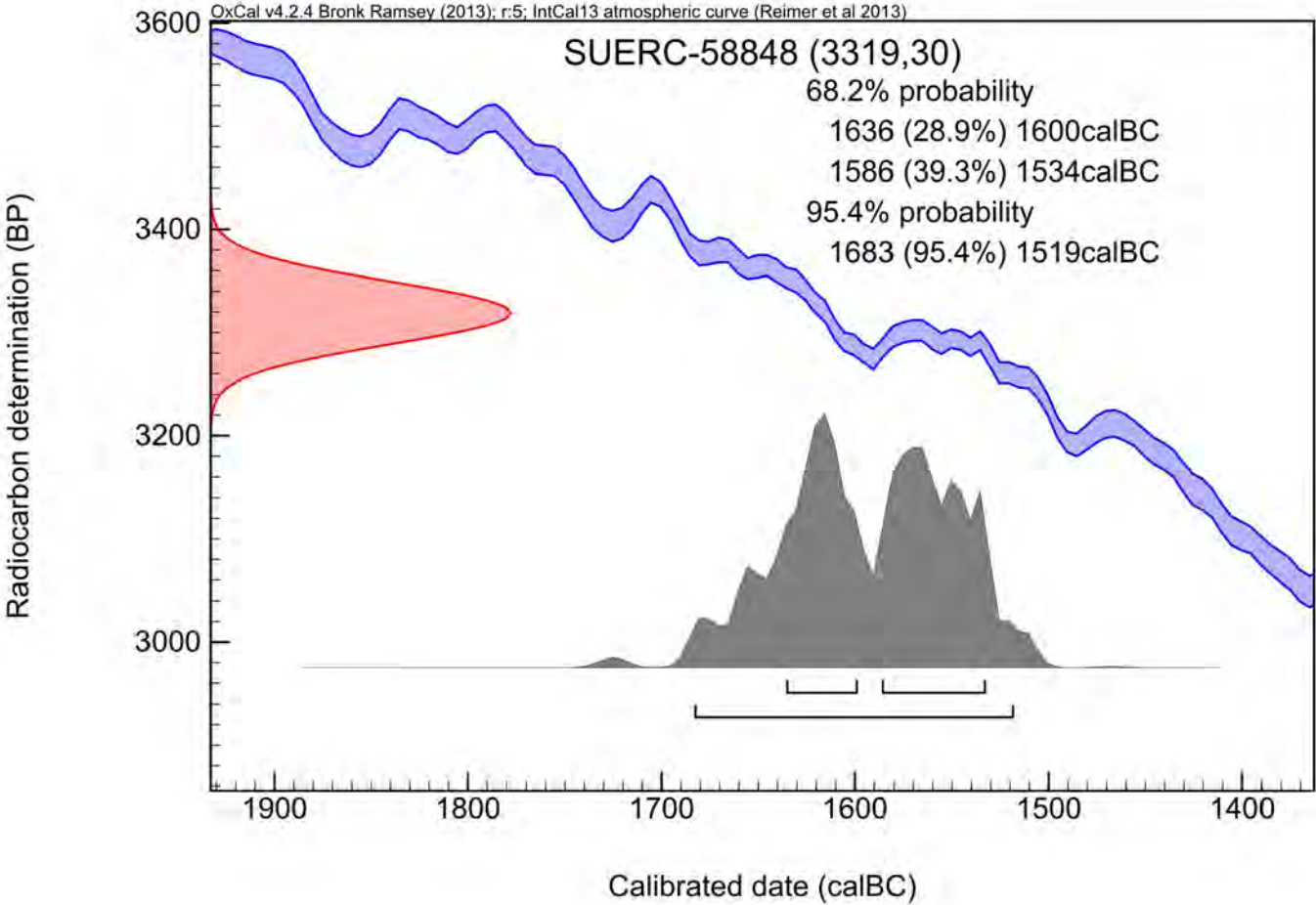
Date :- 23/03/2015

Checked and signed off by :-

P. Naynab

Date :- 23/03/2015

Calibration Plot





Gwynedd Archaeological Trust  
Ymddiriedolaeth Archaeolegol Gwynedd

Craig Beuno, Ffordd y Garth, Bangor, Gwynedd. LL57 2RT  
Ffon: 01248 352535. Ffacs: 01248 370925. email: [gat@heneb.co.uk](mailto:gat@heneb.co.uk)

