



æon archaeology

**Outbuilding at Cefnhirfynydd Isa,
Glasfryn, Cerrigydrudion,
Conwy LL21 0SA
(0/46538)**

December 2021 V 3.0



Historic Building Record Lvl. 1

Project Code: A0343.1

Report no. 0319

Event PRN: 213684





æon archaeology

**Outbuilding at Cefnhirfynydd Isa,
Glasfryn, Cerrigydrudion,
Conwy LL21 0SA
(0/46538)**

December 2021 v3.0

Report no. 0319 / Event PRN: 213684

Historic Building Record

**Aeon Archaeology
Obsidian Offices
Chantry Court
Chester
CH1 4QN**

Written by: Josh Dean BA ACIfA

Checked by: Richard Cooke BA MA MCIfA



Project Code: A0343.1

Date: 02/12/2021

Client: Catrin Hedd Jones

info@aeonarchaeology.co.uk



Outbuilding at Cefnhirfynydd Isa, Glasfryn, Cerrigydrudion, Conwy LL21 0SA (0/46538)

December 2021 v3.0

Copyright Declaration:

Aeon Archaeology grants permission for the material presented within this report to be used by the archives/repository with which it is deposited, in perpetuity, although Aeon Archaeology retains the right to be identified as the author of all project documentation and reports, as specified in the Copyright, Designs and Patents Act 1988 (chapter IV, section 79). The permission will allow the repository to reproduce material, including for use by third parties, with the copyright owner suitably acknowledged.

Disclaimer:

This Report has been prepared solely for the person/party which commissioned it and for the specifically titled project or named part thereof referred to in the Report. The Report should not be relied upon or used for any other project by the commissioning person/party without first obtaining independent verification as to its suitability for such other project, and obtaining the prior written approval of Aeon Archaeology. Aeon Archaeology accepts no responsibility or liability for the consequences of this Report being relied upon or used for any purpose other than the purpose for which it was specifically commissioned. The entitlement to rely upon this Report rests solely with the person/party which commissioned it and does not extend to any other person/party. Aeon Archaeology accepts no responsibility or liability for any use of or reliance upon this Report by any person/party other than the commissioning person/party.



Project Code: A0343.1

Date: 02/12/2021

Client: Catrin Hedd Jones

info@aeonarchaeology.co.uk

Figures

Figure 01: Location of outbuilding at Cefnhirfynydd Isa, Glasfryn, Cerrigydrudion, Conwy, LL21 0SA. Scale 1:20,000 at A4.

Figure 02: Location of outbuilding at Cefnhirfynydd Isa, Glasfryn, Cerrigydrudion, Conwy, LL21 0SA. Scale 1:5,000 at A4.

Figure 03: Location of outbuilding at Cefnhirfynydd Isa, Glasfryn, Cerrigydrudion, Conwy, LL21 0SA. Scale 1:1,000 at A4.

Figure 04: Existing Plan of outbuilding at Cefnhirfynydd Isa, Glasfryn, Cerrigydrudion, Conwy, LL21 0SA. Scale 1:200 at A4.

Plates

Plate 23: East facing elevation (centre/rooms 3/4) of outbuilding, at Cefnhirfynydd Isa, Glasfryn, Conwy - from the east - 1.00m scale

Plate 24: East facing elevation (centre - room 4) of outbuilding, at Cefnhirfynydd Isa, Glasfryn, Conwy - from the east - 1.00m scale

Plate 25: East facing elevation (external door room 4) of outbuilding, at Cefnhirfynydd Isa, Glasfryn, Conwy - from the east - 1.00m scale

Plate 26: East facing elevation (left) of outbuilding, at Cefnhirfynydd Isa, Glasfryn, Conwy - from the east - 1.00m scale

Plate 27: Internal shot of Room 1, within outbuilding at Cefnhirfynydd Isa, Glasfryn, Conwy - from the north - 1.00m scale

Plate 28: Internal shot of Room 1, within outbuilding at Cefnhirfynydd Isa, Glasfryn, Conwy - from the south - 1.00m scale

Plate 29: Internal shot of Room 1, within outbuilding at Cefnhirfynydd Isa, Glasfryn, Conwy - from the east - 1.00m scale

Plate 30: Internal shot of Room 1's ceiling, within outbuilding at Cefnhirfynydd Isa, Glasfryn, Conwy - from the southeast - no scale

Plate 31: Internal shot of Room 2, within outbuilding at Cefnhirfynydd Isa, Glasfryn, Conwy - from the southeast - 1.00m scale

Plate 32: Internal shot of Room 2, within outbuilding at Cefnhirfynydd Isa, Glasfryn, Conwy - from the northwest - 1.00m scale

Plate 33: Internal shot of Room 2's ceiling, within outbuilding at Cefnhirfynydd Isa, Glasfryn, Conwy - from the east - no scale

Plate 34: Internal shot of Room 3, within outbuilding at Cefnhirfynydd Isa, Glasfryn, Conwy - from the southeast - 1.00m scale

Plate 35: Internal shot of Room 3, within outbuilding at Cefnhirfynydd Isa, Glasfryn, Conwy - from the northeast - 1.00m scale

Plate 36: Internal shot of Room 3, within outbuilding at Cefnhirfynydd Isa, Glasfryn, Conwy - from the east - 1.00m scale

Plate 37: Internal shot of Room 3's ceiling, within outbuilding at Cefnhirfynydd Isa, Glasfryn, Conwy - from the northeast - no scale

Plate 38: Internal shot of Room 4, within outbuilding at Cefnhirfynydd Isa, Glasfryn, Conwy - from the north - 1.00m scale

Plate 39: Internal shot of Room 4's ceiling, within outbuilding at Cefnhirfynydd Isa, Glasfryn, Conwy - from the north - no scale

Plate 40: Internal shot of Room 4, within outbuilding at Cefnhirfynydd Isa, Glasfryn, Conwy - from the south - 1.00m scale

Plate 41: Internal shot of Room 4's ceiling, within outbuilding at Cefnhirfynydd Isa, Glasfryn, Conwy - from the south - no scale

Plate 42: Internal shot of Room 4 western elevation, within outbuilding at Cefnhirfynydd Isa, Glasfryn, Conwy - from the south - 1.00m scale

Plate 43: Internal shot of Room 4 eastern elevation, within outbuilding at Cefnhirfynydd Isa, Glasfryn, Conwy - from the south - 1.00m scale

Plate 44: Breached western wall of Room 4 western elevation, within outbuilding at Cefnhirfynydd Isa, Glasfryn, Conwy - from the south - 1.00m scale

Plate 45: Context shot of Room 4 looking through to Room 3, within outbuilding at Cefnhirfynydd Isa, Glasfryn, Conwy - from the south - 1.00m scale

Plates

Plate 01: Context shot with Farmhouse, of outbuilding at Cefnhirfynydd Isa, Glasfryn, Conwy - from the southeast - no scale

Plate 02: Context shot with NW Barn, of outbuilding at Cefnhirfynydd Isa, Glasfryn, Conwy - from the northwest - 1.00m scale

Plate 03: Context shot with NE Barn, of outbuilding at Cefnhirfynydd Isa, Glasfryn, Conwy - from the northeast - 1.00m scale

Plate 04: Context shot of south of outbuilding and Farmhouse, at Cefnhirfynydd Isa, Glasfryn, Conwy - from the east
- 1.00m scale

Plate 05: Context shot of north of outbuilding and Farmhouse, at Cefnhirfynydd Isa, Glasfryn, Conwy - from the east
- no scale

Plate 06: Context shot of outbuilding with Farmhouse and NE barn, at Cefnhirfynydd Isa, Glasfryn, Conwy - from the east
- no scale

Plate 07: Close up context shot of outbuilding with Farmhouse and NE barn, at Cefnhirfynydd Isa, Glasfryn, Conwy - from
the east - no scale

Plate 08: Context shot of outbuilding with Farmhouse and NE barn, at Cefnhirfynydd Isa, Glasfryn, Conwy - from the southeast
- no scale

Plate 09: Oblique shot of southern and eastern elevations of outbuilding, at Cefnhirfynydd Isa, Glasfryn, Conwy - from the
southeast - no scale

Plate 10: South facing gable elevation of outbuilding, at Cefnhirfynydd Isa, Glasfryn, Conwy - from the south - 1.00m scale

Plate 11: Oblique shot of south facing gable elevation of outbuilding, at Cefnhirfynydd Isa, Glasfryn, Conwy - from the southwest
- 1.00m scale

Plate 12: Oblique shot of western elevation of outbuilding, at Cefnhirfynydd Isa, Glasfryn, Conwy - from the southwest -
1.00m scale

Plate 13: West facing elevation (right) of outbuilding, at Cefnhirfynydd Isa, Glasfryn, Conwy - from the west - 1.00m scale

Plate 14: West facing elevation (centre-right) of outbuilding, at Cefnhirfynydd Isa, Glasfryn, Conwy - from the west - 1.00m scale

Plate 15: West facing elevation (centre-left) of outbuilding, at Cefnhirfynydd Isa, Glasfryn, Conwy - from the west - 1.00m scale

Plate 16: West facing elevation (left) of outbuilding, at Cefnhirfynydd Isa, Glasfryn, Conwy - from the west - 1.00m scale

Plate 17: West facing elevation (left) of outbuilding - blocked up doorway, at Cefnhirfynydd Isa, Glasfryn, Conwy - from the
west - 1.00m scale

Plate 18: Oblique shot of western and northern elevations of outbuilding, at Cefnhirfynydd Isa, Glasfryn, Conwy - from the
southwest - 1.00m scale

Plate 19: North facing gable elevation of outbuilding, at Cefnhirfynydd Isa, Glasfryn, Conwy - from the north - 1.00m scale

Plate 20: Oblique shot of eastern and northern elevations of outbuilding, at Cefnhirfynydd Isa, Glasfryn, Conwy - from the
northeast - 1.00m scale

Plate 21: East facing elevation (right) of outbuilding, at Cefnhirfynydd Isa, Glasfryn, Conwy - from the east - 1.00m scale

Plate 22: East facing elevation (centre/rooms 2/3) of outbuilding, at Cefnhirfynydd Isa, Glasfryn, Conwy - from the east -
1.00m scale

Contents

1.0 NON-TECHNICAL SUMMARY	1
2.0 INTRODUCTION	2
3.0 POLICY CONTEXT	3
4.0 REQUIREMENTS	5
4.1 Building Record	5
4.2 Photographic Record.	5
5.0 METHOD STATEMENT	6
5.1 Photographic Record	6
5.1.1 Written Account	6
5.1.2 Photographs	6
5.1.3 Drawings	6
5.2 Processing data, illustration, report and archiving	6
6.0 DIGITAL DATA MANAGEMENT PLAN	7
6.1 Type of study	7
6.2 Types of data	7
6.3 Format and scale of the data	7
6.4 Methodologies for data collection / generation	7
6.5 Data quality and standards	7
6.6 Managing, storing and curating data	7
6.7 Metadata standards and data documentation	7
6.8 Data preservation strategy and standards	8
6.9 Suitability for sharing	8
6.10 Discovery by potential users of the research data	8
6.11 Governance of access	8
6.12 The study team's exclusive use of the data	8
6.13 Restrictions or delays to sharing, with planned actions to limit such restrictions	8
6.14 Regulation of responsibilities of users	8
6.15 Responsibilities	9
6.16 Organisational policies on data sharing and data security	9
7.0 PHOTOGRAPHIC RECORD	10
8.0 SOURCES	12

1.0 NON-TECHNICAL SUMMARY

Comisiynwyd Aeon Archaeology gan Mrs. Catrin Hedd Jones i gynnal cofnod adeiladu hanesyddol lefel 1 o hen beudy/llaethdy yn Cefnhirfynydd Isa, Glasfryn, Cerrigydrudion, Conwy LL21 0SA (wedi'i ganoli ar NGR SH 91971 49601) cyn ei drawsnewid a newid llety gwyliau.

Aeon Archaeology was commissioned by Mrs. Catrin Hedd Jones to carry out a level 1 historic building record of a barn outbuilding at Cefnhirfynydd Isa, Glasfryn, Cerrigydrudion, Conwy LL21 0SA (centered on **NGR SH 91971 49601**) in advance of conversion and alteration to holiday accommodation.

2.0 INTRODUCTION

Aeon Archaeology was commissioned by Mrs. Catrin Hedd Jones, hereafter ‘the Client’, to carry out a level 1 historic building record of a barn outbuilding at Cefnhirfynydd Isa, Glasfryn, Cerrigydrudion, Conwy LL21 0SA (centred on **NGR SH 91971 49601**) in advance of conversion and alteration to holiday accommodation.

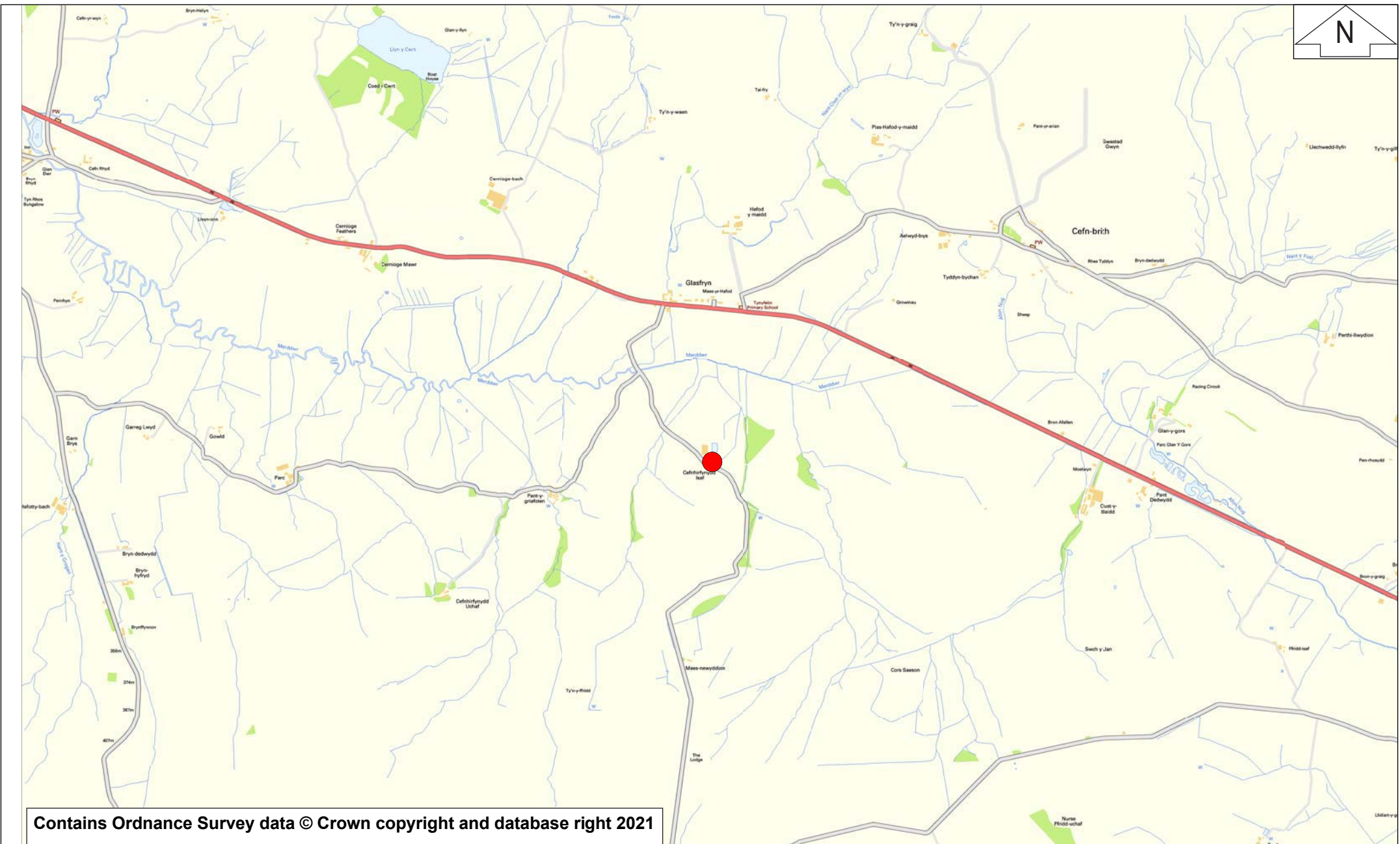
Planning permission (0/46538 dated 18/10/2019)) has been secured by the Client from Conwy County Borough Council, hereafter ‘the Council’, for the *Conversion to form Holiday Let Accommodations and demolition of shed*. The following condition concerning archaeology has been applied to the consent:

The development hereby approved shall not commence until an appropriate photographic survey (equivalent to a Historic England Photographic Survey - Understanding Historic Buildings, 2016) of the existing buildings has been carried out in accordance with details to be submitted to, and approved by the Local Planning Authority. After approval by the Local Planning Authority, a copy of the photographs should also be sent to the Historic Environment Record Officer, Clwyd Powys Archaeological Trust, 41 Broad Street, Welshpool, Powys, SY21 7RR for inclusion in the regional Historic Environment Record.

REASON. To allow an adequate analytical record of the buildings to be made, before they are converted, to ensure that the buildings origins, use and development are understood and the main features, character and state of preservation are recorded.

It was a requirement that a WSI be approved in writing by the Development Management Archaeologist (DMA) at the Clwyd-Powys Archaeological Trust (CPAT) prior to the survey being undertaken.

This design and all subsequent mitigation will conform to the guidelines specified in Historic England’s ‘Understanding Historic Buildings: a guide to good recording practice’ (2016) & Standard and Guidance for the Archaeological Investigation and Recording of Standing Buildings or Structures (Chartered Institute for Archaeologists, 2020).



Contains Ordnance Survey data © Crown copyright and database right 2021

Figure 01: Location of outbuilding at Cefnhirfynydd Isa, Glasfryn, Cerrigydrudion, Conwy LL21 OSA. Scale 1:20,000 at A4.



Aeon Archaeology
 Richard Cooke BA MA MCIFA
 Obsidian Offices, Chantry Court,
 Chester CH1 4QN
 Tel: 07866925393 / 01244 531585
www.aeonarchaeology.co.uk

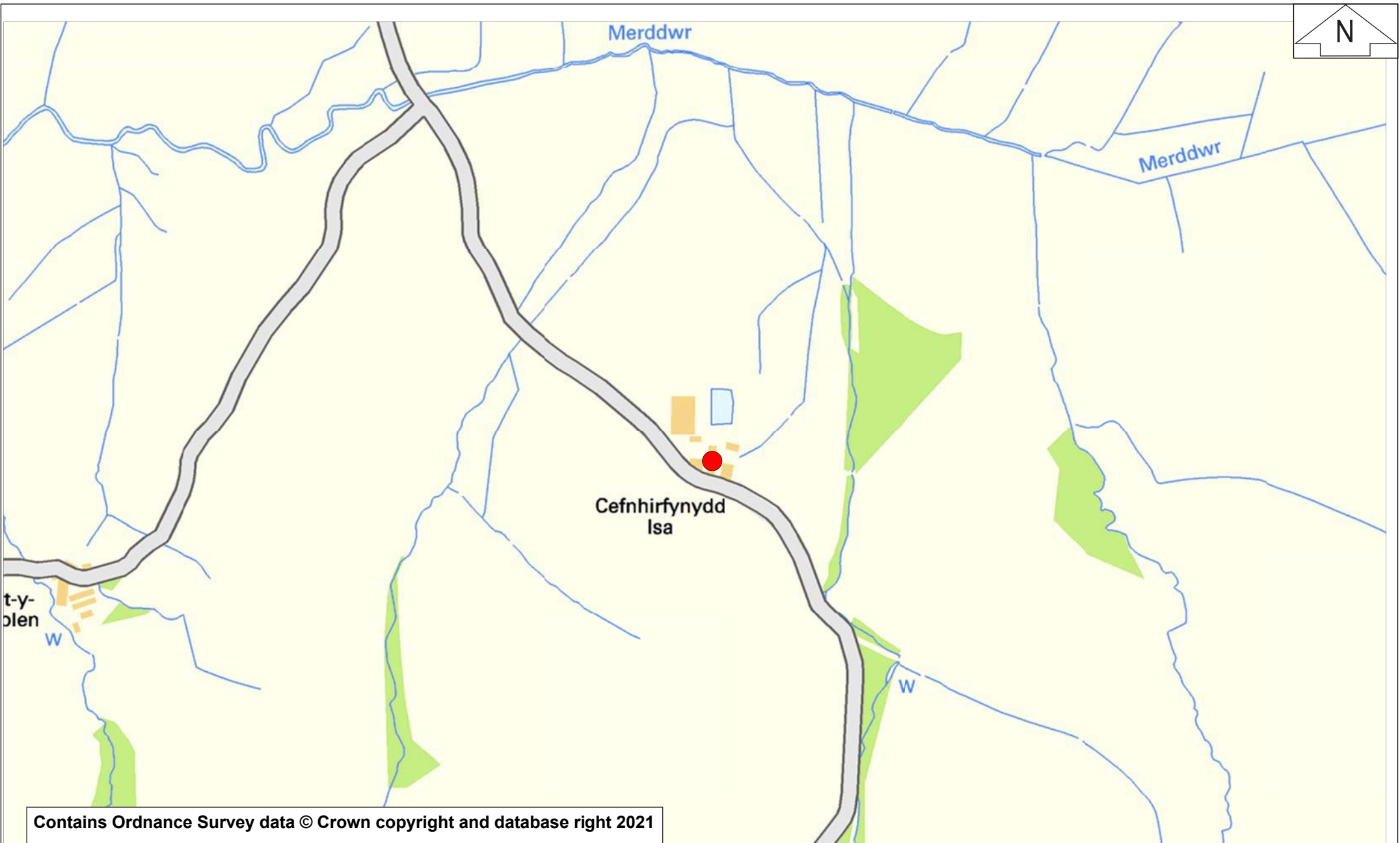
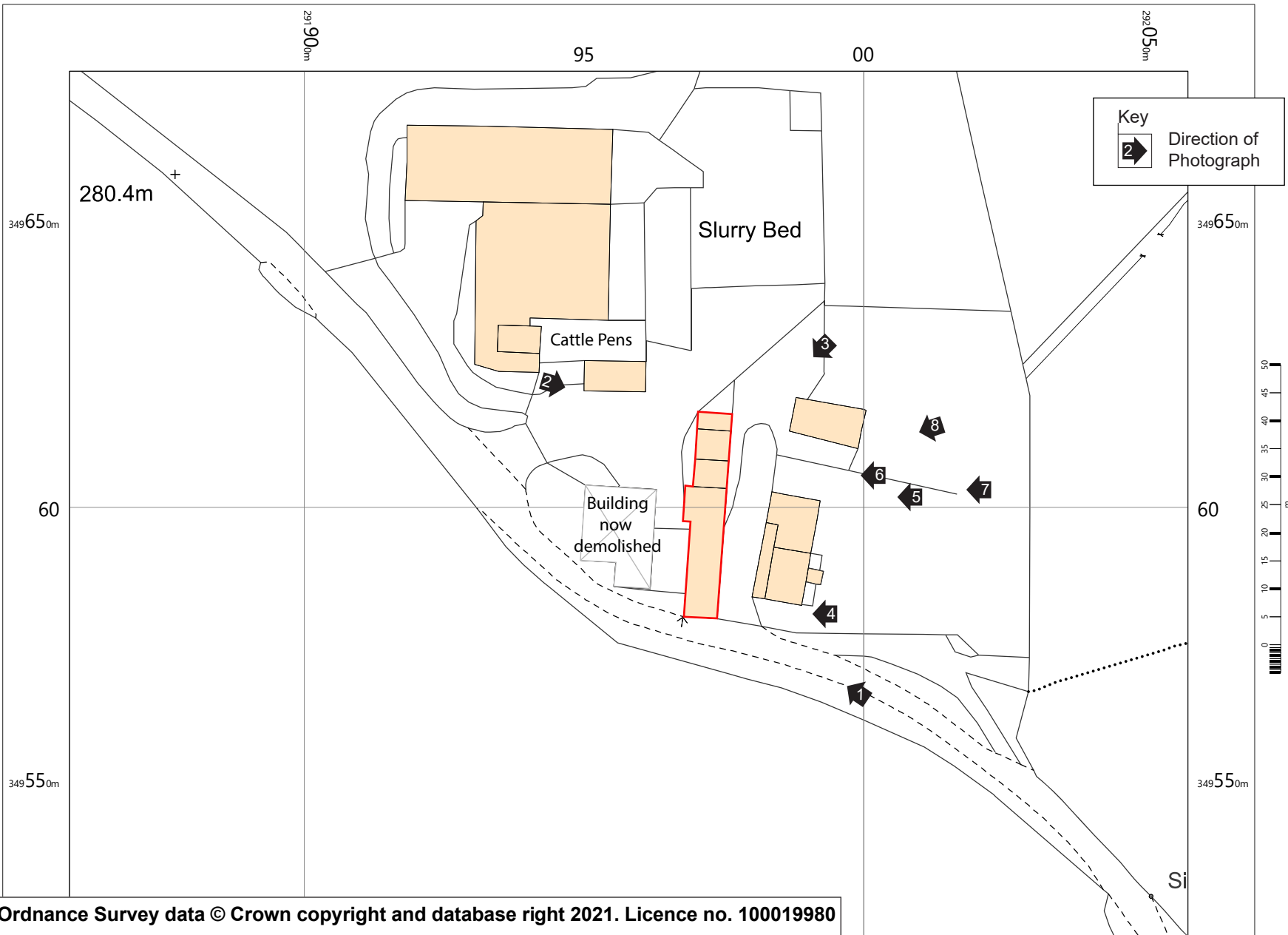


Figure 02: Location of outbuilding at Cefnhirfynydd Isa, Glasfryn, Cerrigydrudion, Conwy LL21 0SA. Scale 1:5,000 at A4.



Aeon Archaeology
Richard Cooke BA MA MCIFA
Obsidian Offices, Chantry Court,
Chester CH1 4QN
Tel: 07866925393 / 01244 531585
www.aeonarchaeology.co.uk



Contains Ordnance Survey data © Crown copyright and database right 2021. Licence no. 100019980



Figure 03: Location of outbuilding at Cefnhrifynydd Isa, Glasfryn, Cerrigydrudion, Conwy LL21 0SA. Scale 1:1,000 at A4.

Aeon Archaeology
Richard Cooke BA MA MCifA
Obsidian Offices, Chantry Court,
Chester CH1 4QN
Tel: 07866925393 / 01244 531585
www.aeonarchaeology.co.uk

3.0 POLICY CONTEXT

At an international level there are two principal agreements concerning the protection of the cultural heritage and archaeological resource – the UNESCO Convention Concerning the Protection of World Cultural and Natural Heritage and the European Convention on the Protection of the Archaeological Heritage, commonly known as the Valetta Convention. The latter was agreed by the Member States of the Council of Europe in 1992, and also became law in 1992. It has been ratified by the UK, and responsibility for its implementation rests with Department for Culture Media and Sport.

The management and protection of the historic environment in Wales is set out within the following legislation:

- The Planning (Listed Buildings and Conservation Areas) Act 1990 (As amended)
- The Historic Environment (Wales) Act 2016
- The Town and Country Planning Act 1990
- The Ancient Monuments and Archaeological Areas Act 1979
- The Town and Country Planning (General Permitted Development Order) 1995 (As amended)

The Historic Environment (Wales) Act is the most recent legislation for the management of the Historic Environment and amends two pieces of UK legislation — the Ancient Monuments and Archaeological Areas Act 1979 and the Planning (Listed Buildings and Conservation Areas) Act 1990. The new Act has three main aims:

- to give more effective protection to listed buildings and scheduled monuments;
- to improve the sustainable management of the historic environment; and
- to introduce greater transparency and accountability into decisions taken on the historic environment.

With respect to the cultural heritage of the built environment the Planning (Conservation Areas and Listed Buildings) Act 1990 applies. The Act sets out the legislative framework within which works and development affecting listed buildings and conservation areas must be considered. This states that:-

“In considering whether to grant planning permission for development which affects a listed building or its setting, the local planning authority or, as the case may be, the Secretary of State shall have special regard to the desirability of preserving the building or its setting or any features of special architectural or historic interest which it possesses” (s66(1))

Other known sites of cultural heritage/archaeological significance can be entered onto county-based Historic Environment Records under the Town and Country Planning 1995.

Planning Policy Wales sets out the land use planning policies of the Welsh Government. Chapter 6 covers the historic environment and emphasises that the positive management of change in the historic environment is based on a full understanding of the nature and significance of historic assets and the recognition of the benefits that they can deliver in a vibrant culture and economy.

Various principles and policies related to cultural heritage and archaeology are set out in the Planning Policy Wales which guide local planning authorities with respect to the wider historic environment.

The following paragraphs from Planning Policy Wales are particularly relevant and are quoted in full:

Paragraph 6.1.5 concerns planning applications:

The planning system must take into account the Welsh Government's objectives to protect, conserve, promote and enhance the historic environment as a resource for the general well-being of present and future generations. The historic environment is a finite, non-renewable and shared resource and a vital and integral part of the historical and cultural identity of Wales. It contributes to economic vitality and culture, civic pride, local distinctiveness and the quality of Welsh life. The historic environment can only be maintained as a resource for future generations if the individual historic assets are protected and conserved. Cadw's published Conservation Principles highlights the need to base decisions on an understanding of the impact a proposal may have on the significance of an historic asset.

Planning Policy Wales is supplemented by a series of Technical Advice Notes (TAN). Technical Advice Note 24: The Historic Environment contains detailed guidance on how the planning system considers the historic environment during development plan, preparation and decision making on planning and listed building consent applications. TAN 24 replaces the following Welsh Office Circulars:

- 60/96 Planning and the Historic Environment: Archaeology
- 61/96 Planning and the Historic Environment: Historic Buildings and Conservation Areas
- 1/98 Planning and the Historic Environment: Directions by the Secretary of State for Wales

4.0 REQUIREMENTS

4.1 Building Record

The requirements were for a photographic record of, to carry out a photographic record of the historic building consisting of a barn outbuilding at Cefnhirfynydd Isa, Glasfryn, Cerrigydrudion, Conwy in advance of alteration, however should observations or desk-based research suggest the potential for significant features to be encountered during the demolition works, the archaeological contractor should make arrangements to undertake any appropriate supplementary recording work during the development. The CPAT Development Control Archaeologist had requested that the building record be roughly commensurate with the Historic England's '*Understanding Historic Buildings: a guide to good recording practice*' (2016)

4.2 Photographic Record.

Both the exterior and the interior were viewed and photographed. The location and orientation of photographs were located on a sketch plan produced by Aeon Archaeology.

The detailed photographic record consisted of Historic England's '*Understanding Historic Buildings: a guide to good recording practice*' (2016) elements:

- written account: 1-3
- drawings: 1
- photographs: 1,2,4

5.0 METHOD STATEMENT

5.1 Photographic Record

5.1.1 Written Account

The written account included:

- The building's precise location as a National Grid Reference and address form;
- A note of any statutory designation and non-statutory designation;
- The date of the record, name(s) of the recorder(s) and archive location;

5.1.2 Photographs

The photographic record included:

- A general view or views of the building;
- The building's external appearance. Typically, a series of oblique views will show all external elevations of the building and give an impression of its size and shape;
- The overall appearance of the principal rooms and circulation areas.

A Digital SLR (Canon 600D) set to maximum resolution was used throughout.

5.1.3 Drawings

The drawn record included:

- A site plan showing the location and orientation of photographs. This will label all room spaces and indicate any architectural features of note.

5.2 Processing data, illustration, report and archiving

Following completion of the record as outlined above, a report was produced incorporating the following:

- A site location plan
- A plan illustrating the location and direction of photographs
- A full bibliography of sources consulted
- Illustrations, including plans and photographs, will be incorporated within the report.

6.0 DIGITAL DATA MANAGEMENT PLAN

6.1 Type of study

Photographic record of a barn outbuilding at Cefnhirfynydd Isa, Glasfryn, Cerrigydrudion, Conwy LL21 0SA (NGR SH 91971 49601). in advance of alteration.

6.2 Types of data

Photographs, measured plans, context sheets, context register, photographic register, trench sheets.

6.3 Format and scale of the data

Photographs taken in *RAW* format and later converted to *TIF* format for long term archiving and *JPEG* format for use in the digital report, converted using *Adobe Photoshop*. All photographs renamed using *AF5* freeware with the prefix (*project code_frame number*) and a photographic metadata created using Microsoft Excel (*.xlsx*) or Access (*.accdb*).

6.4 Methodologies for data collection / generation

Digital data will be collected / generated in line with recommendations made in the Chartered Institute for Archaeologists (CIfA) *Standard and Guidance for the Creation, Compilation, Transfer and Deposition of Archaeological Archives* (2020). Sections 3.3.1 and 3.3.3 are relevant:

3.3.1 Project specifications, research designs or similar documents should include a project specific Selection Strategy and a Data Management Plan.

3.3.3 Project designs or schedules of works etc should outline the methodology used in recording all information, in order to demonstrate that all aspects of archive creation will ensure consistency; for instance in terminologies and the application of codes in digital data sets, highlighting relevant data standards where appropriate

6.5 Data quality and standards

Consistency and quality of data collection / generation shall be controlled and documented through the use of standardised procedure as outlined in the WSI. This will include the use of standardised data capture file formats, digital proformas, data entry validation, peer review, and use of controlled vocabularies.

6.6 Managing, storing and curating data.

All digital data will be organised into Aeon Archaeology proforma project file systems and backed up to the cloud using *Digital River's Crashplan* with additional copies made to external physical hard drive.

6.7 Metadata standards and data documentation

Digital metadata created using Microsoft Excel (*.xlsx*) or Access (*.accdb*) of all photographic plates.

Paper metadata created from Aeon Archaeology proformas for contexts, artefacts, environmental samples, watching brief day sheets, trench sheets, and basic record sheets and then scanned to create digital .PDF copies.

6.8 Data preservation strategy and standards

Long term data storage will be through the submission of digital (.PDF) reports to the regional Historic Environment Record (HER); submission of digital (.PDF) reports and a project completion form to the Oasis database; submission of the scanned (.PDF) archive, photographic plates (.TIF), and metadata (.xlsx) (.accdb) to the Archaeology Data Service (ADS); and retention of copies of all digital files at Aeon Archaeology on physical external hard drive and uploaded to the cloud.

6.9 Suitability for sharing

All digital data will be placed within the public realm (through the channels in 6.8) except for where project confidentiality restricts the sharing of data. All data sets will be selected / discriminated by the Senior Archaeologist at Aeon Archaeology and written permission will be sought from all project specific Clients prior to the sharing of data.

6.10 Discovery by potential users of the research data

Potential users of the generated digital data (outside of the organisation) will be able to source the data and identify whether it could be suitable for their research purposes through access granted via the RCAHMW website. Requests can also be made for data through the regional HER's and directly to Aeon Archaeology (info@aeonarchaeology.co.uk).

6.11 Governance of access

The decision to supply research data to potential new users will be via the associated website request (RCAHMW) or via the Senior Archaeologist when made directly to Aeon Archaeology.

6.12 The study team's exclusive use of the data

Aeon Archaeology's requirement is for timely data sharing, with the understanding that a limited, defined period of exclusive use of data for primary research is reasonable according to the nature and value of the data, and that this restriction on sharing should be based on simple, clear principles. This time period is expected to be six months from completion of the project however Aeon Archaeology reserves the right to extend this period without notice if primary data research dictates.

6.13 Restrictions or delays to sharing, with planned actions to limit such restrictions

Restriction to data sharing may be due to participant confidentiality or consent agreements. Strategies to limit restrictions will include data being anonymised or aggregated; gaining participant consent for data sharing; and gaining copyright permissions. For prospective studies, consent procedures will include provision for data sharing to maximise the value of the data for wider research use, while providing adequate safeguards for participants.

6.14 Regulation of responsibilities of users

External users of the data will be bound by data sharing agreements provided by the relevant organisation or directly through Aeon Archaeology.

6.15 Responsibilities

Responsibility for study-wide data management, metadata creation, data security and quality assurance of data will be through the Senior Archaeologist (Richard Cooke BA MA MCIFA) at Aeon Archaeology when concerning data generation and early/mid-term storage. Upon deposition with digital depositories the study-wide data management, metadata creation, data security and quality assurance of data will be the responsibility of the specific organisations' themselves.

6.16 Organisational policies on data sharing and data security

The following Aeon Archaeology policies are relevant:

- Aeon Archaeology Archive Deposition Policy 2019
- Aeon Archaeology Quality Assurance Policy 2019
- Aeon Archaeology Conflict of Interest Policy 2019
- Aeon Archaeology Outreach Policy 2019
- Aeon Archaeology Digital Management Plan 2020

7.0 PHOTOGRAPHIC RECORD

(*Figures 1-4; Plates 1-45*)

The outbuilding at Cefnhirfynydd Isa, Glasfryn is noted on CPAT Historic Environment Record as a *POST-MEDIEVAL FARMSTEAD* with the *Primary Reference Number (66100)*, the entry for the record reads;

(*this is a...*) *Farmstead depicted on 1st edition (1879) and 1963 6 inch OS maps*

The outbuilding is located to the west of the main farmhouse building and is linear in plan with a sloping farmyard to the north. To the west a former farm building has been demolished and the long barn is visible from the roadway. To the southeast there are a concentration of large agricultural buildings and cattle pens (*beudy, tai allan gwartheg*). The building is constructed from sub-rounded and sub-angular elements of stone rubble which has been bonded with lime mortar. These stones are a combination of mudstone, siltstone and sandstone with an overall grey/green quality, probably geologically associated with either the *Dolgau Mudstones Formation* or the *Bron Y Graig Formation*; both of which are partially covered in pale grey/green lichens. The corners of the building have been formed by large and distinctive quoins of partially dressed stone.

On the north facing gable end there is a small cast iron flywheel which is visible projecting outward from the elevation on the right-hand side; this potentially once served as gearing for a stationary diesel engine which may have powered machinery within the building. On the western elevation access to the building is achieved via a single large (former cart door) open doorway which permits access to *Room 4*. This elevation has also been removed on the right-hand side and the opening is now supported by Acro props. Visible on the left-hand side of the elevation is a blocked-up doorway (stone rubble and lime mortar) which is denoted by large dressed quoins visible on either side. The only other access is from the eastern elevation (the farmhouse side) with a single doorway at the far left-hand side and another single doorway slightly further to the right (with black painted door), both of which permit access to *Room 4*. The wall which previously enclosed *Room 2* and part of *Room 3* has been totally removed up to the eaves of the building and now remains open to the elements; the roof purlin is supported by Acro props. At the far right-hand end of the elevation a large sliding door permits access to *Room 1* which may have previously been a cart shed or workshop. The first floor within these buildings has been entirely removed and was not recognisable at the time of the historic building record.

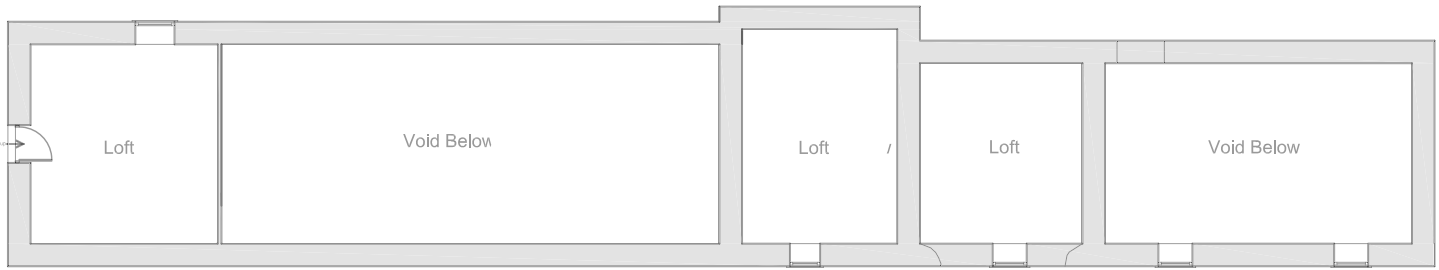
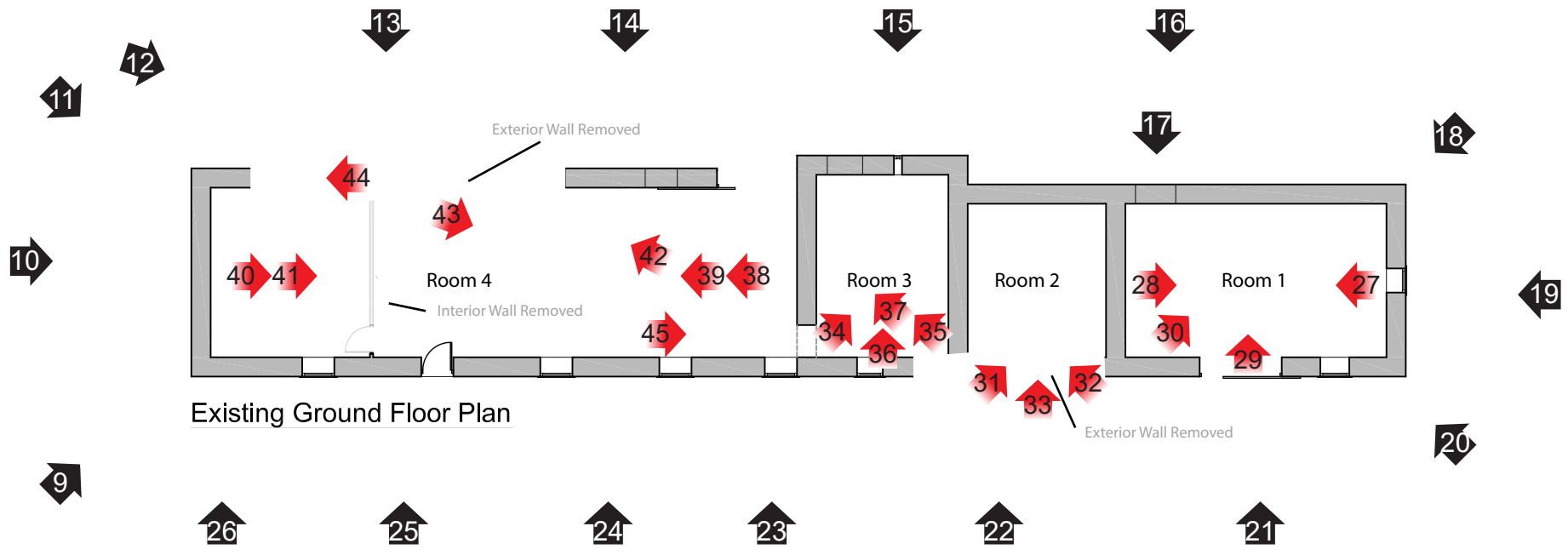
The interior of *Room 1* (northern room) was two and a half storeys in height and was open to the roof pitch showing the underside of the roof which had been constructed onto three simple, soleplate trusses which had been braced into the elevation on an angle. The floor level of *Room 2* was approximately half a floor height higher than *Room 1* and there was a single step up into *Room 3*; *Room 3* and *Room 4* shared the same ground level. It appears as if the southern end (*Room 4*) of the barn had been benched into the hillside and the floors within the other rooms levelled flat as the hill side falls away to the north – producing a stepped effect.

Room 4 was the largest room and was north-south aligned; it appears to be a former long Cowshed (*beudy*) or Dairy (*llaethdy*). *Rooms 3 and 2* may have been small byres (*beudy, glowty*) or storage rooms which would have had timber haylofts (*ystafell uwchben, tafloddydd, taflodau*) installed at first floor height. *Room 4* is distinguishable due to its height and had a cast iron wheel high up on the northern elevation; a flywheel is seen on the exterior of the building, with the internal wheel within the building being larger – insinuating that an

external stationary diesel engine (*peiriant unfan*) may have previously run machinery such as a cream separator (*gwahanu'r llaeth*) or sheep shearing machine (*periant cnaif*) which was located within the building. Therefore, the room could have been a creamery (*hufendy*, *hufenfa*) or a wool-shed (*gweithyddfa gwlân*).

The outbuilding may be considered a typical although very large, example of a stone-built vernacular farm building familiar to the many farmsteads that are characteristic of this area of southern Conwy bordering Snowdonia. The outbuilding likely dates to a period range within the early-mid Victorian era, given that it is visible on the *OS 1st edition 6-inch map 1879*.

The photographic record was undertaken by Josh Dean BA archaeologist at Aeon Archaeology on the 28th November, 2021. Upon approval from the Client and the CPAT Development Control Archaeologist the report will be archived with the CPAT Historic Environment Record (HER); the Royal Commission on the Ancient and Historic Monuments of Wales (RCAHMW); and a copy retained at Aeon Archaeology, Chester under project code **A0343.1**, *Report no# 0319*.



Key



-  External Photograph
-  Internal Photograph



Figure 04: Existing plan of outbuilding at Cefnhirfynydd Isa, Glasfryn, Cerrigydrudion, Conwy LL21 0SA. Scale 1:200 at A4.

Aeon Archaeology
Richard Cooke BA MA MCifA
Obsidian Offices, Chantry Court,
Chester CH1 4QN
Tel: 07866925393 / 01244 531585
www.aeonarchaeology.co.uk



Plate 01: Context shot with Farmhouse, of outbuilding at Cefnhirfynydd Isa, Glasfryn, Conwy - from the southeast - no scale



Plate 02: Context shot with NW Barn, of outbuilding at Cefnhrifnydd Isa, Glasfryn, Conwy - from the northwest - 1.00m scale



Plate 03: Context shot with NE Barn, of outbuilding at Cefnhirfynydd Isa, Glasfryn, Conwy - from the northeast - 1.00m scale



Plate 04: Context shot of south of outbuilding and Farmhouse, at Cefnhirfynydd Isa, Glasfryn, Conwy - from the east - 1.00m scale



Plate 05: Context shot of north of outbuilding and Farmhouse, at Cefnhirfynydd Isa, Glasfryn, Conwy - from the east - no scale



Plate 06: Context shot of outbuilding with Farmhouse and NE barn, at Cefnhirfynydd Isa, Glasfryn, Conwy - from the east - no scale



Plate 07: Close up context shot of outbuilding with Farmhouse and NE barn, at Cefnhirfynydd Isa, Glasfryn, Conwy - from the east - no scale



Plate 08: Context shot of outbuilding with Farmhouse and NE barn, at Cefnhirfynydd Isa, Glasfryn, Conwy - from the southeast - no scale



Plate 09: Oblique shot of southern and eastern elevations of outbuilding, at Cefnhirfynydd Isa, Glasfryn, Conwy - from the southeast - no scale



Plate 10: South facing gable elevation of outbuilding, at Cefnhirfynydd Isa, Glasfryn, Conwy - from the south - 1.00m scale



Plate 11: Oblique shot of south facing gable elevation of outbuilding, at Cefnhirfynydd Isa, Glasfryn, Conwy - from the southwest - 1.00m scale



Plate 12: Oblique shot of western elevation of outbuilding, at Cefnhrifnydd Isa, Glasfryn, Conwy - from the southwest - 1.00m scale



Plate 13: West facing elevation (right) of outbuilding, at Cefnhirfynydd Isa, Glasfryn, Conwy - from the west - 1.00m scale



Plate 14: West facing elevation (centre-right) of outbuilding, at Cefnhirfynydd Isa, Glasfryn, Conwy - from the west - 1.00m scale



Plate 15: West facing elevation (centre-left) of outbuilding, at Cefnhirfynydd Isa, Glasfryn, Conwy - from the west - 1.00m scale



Plate 16: West facing elevation (left) of outbuilding, at Cefnhirfynydd Isa, Glasfryn, Conwy - from the west - 1.00m scale



Plate 17: West facing elevation (left) of outbuilding - blocked up doorway, at Cefnhirfynydd
Isa, Glasfryn, Conwy - from the west - 1.00m scale



Plate 18: Oblique shot of western and northern elevations of outbuilding, at Cefnhirfynydd Isa, Glasfryn, Conwy - from the southwest - 1.00m scale



Plate 19: North facing gable elevation of outbuilding, at Cefnhirfynydd Isa, Glasfryn, Conwy - from the north - 1.00m scale



Plate 20: Oblique shot of eastern and northern elevations of outbuilding, at Cefnhirfynydd Isa, Glasfryn, Conwy - from the northeast - 1.00m scale



Plate 21: East facing elevation (right) of outbuilding, at Cefnhirfynydd Isa, Glasfryn, Conwy - from the east - 1.00m scale



Plate 22: East facing elevation (centre/rooms 2/3) of outbuilding, at Cefnhirfynydd Isa, Glasfryn, Conwy - from the east - 1.00m scale



Plate 23: East facing elevation (centre/rooms 3/4) of outbuilding, at Cefnhirfynydd Isa, Glasfryn, Conwy - from the east - 1.00m scale



Plate 24: East facing elevation (centre - room 4) of outbuilding, at Cefnhirfynydd Isa, Glasfryn, Conwy - from the east - 1.00m scale



Plate 25: East facing elevation (external door room 4) of outbuilding, at Cefnhirfynydd Isa, Glasfryn, Conwy - from the east - 1.00m scale



Plate 26: East facing elevation (left) of outbuilding, at Cefnhirfynydd Isa, Glasfryn, Conwy - from the east - 1.00m scale

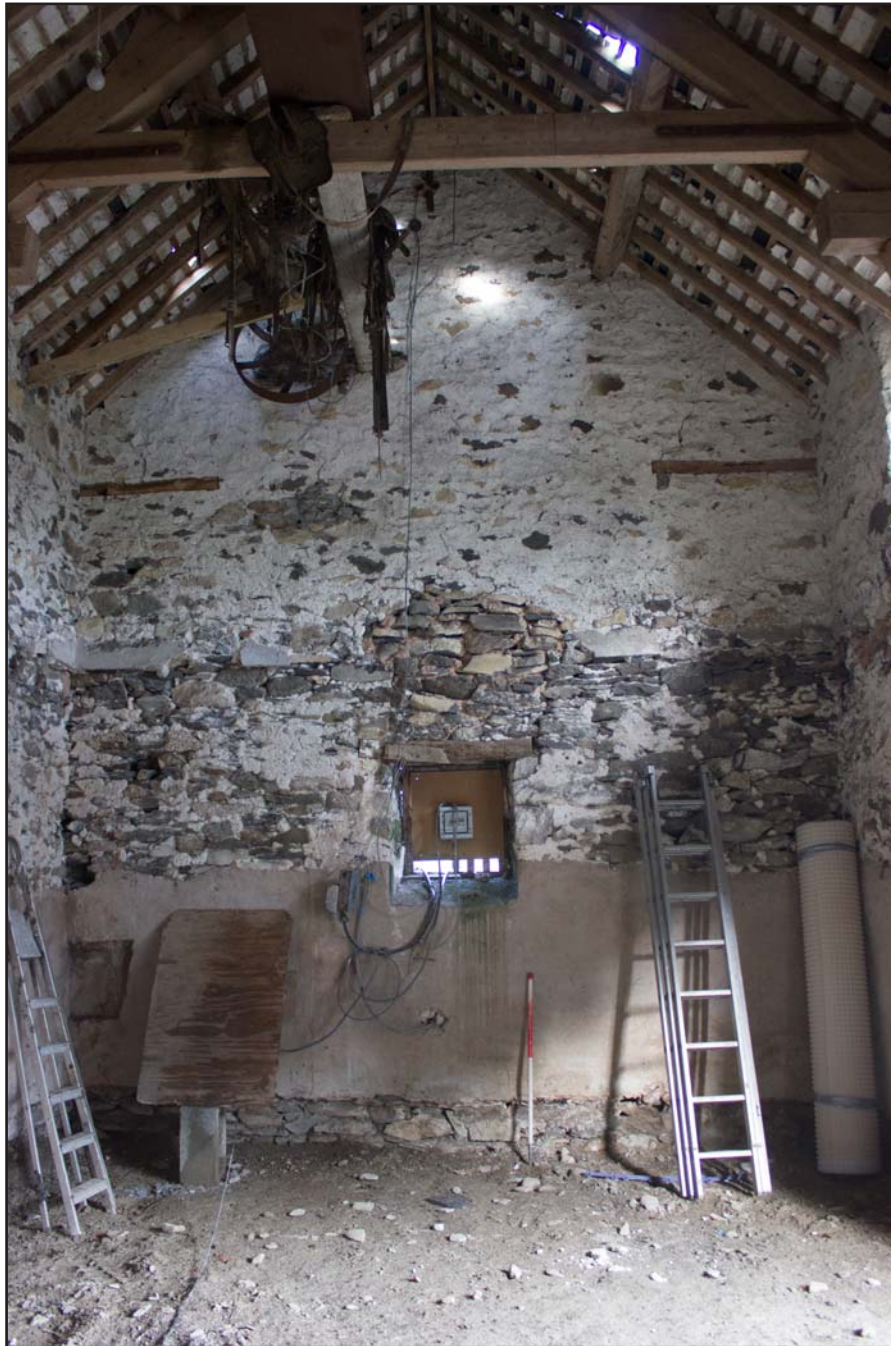


Plate 27: Internal shot of Room 1, within outbuilding at Cefnhirfynydd Isa, Glasfryn, Conwy - from the north - 1.00m scale



Plate 28: Internal shot of Room 1, within outbuilding at Cefnhirfynydd Isa, Glasfryn, Conwy - from the south - 1.00m scale



Plate 29: Internal shot of Room 1, within outbuilding at Cefnhirfynydd Isa, Glasfryn, Conwy - from the east - 1.00m scale



Plate 30: Internal shot of Room 1's ceiling, within outbuilding at Cefnhirfynydd Isa, Glasfryn, Conwy - from the southeast - no scale



Plate 31: Internal shot of Room 2, within outbuilding at Cefnhirfynydd Isa, Glasfryn, Conwy - from the southeast - 1.00m scale



Plate 32: Internal shot of Room 2, within outbuilding at Cefnhirfynydd Isa, Glasfryn, Conwy - from the northwest - 1.00m scale



Plate 33: Internal shot of Room 2's ceiling, within outbuilding at Cefnhirfynydd Isa, Glasfryn, Conwy - from the east - no scale



Plate 34: Internal shot of Room 3, within outbuilding at Cefnhirfynydd Isa, Glasfryn, Conwy - from the southeast - 1.00m scale



Plate 35: Internal shot of Room 3, within outbuilding at Cefnhirfynydd Isa, Glasfryn, Conwy - from the northeast - 1.00m scale



Plate 36: Internal shot of Room 3, within outbuilding at Cefnhirfynydd Isa, Glasfryn, Conwy - from the east - 1.00m scale



Plate 37: Internal shot of Room 3's ceiling, within outbuilding at Cefnhirfynydd Isa, Glasfryn, Conwy - from the northeast - no scale



Plate 38: Internal shot of Room 4, within outbuilding at Cefnhirfynydd Isa, Glasfryn, Conwy - from the north - 1.00m scale



Plate 39: Internal shot of Room 4's ceiling, within outbuilding at Cefnhirfynydd Isa, Glasfryn, Conwy - from the north - no scale



Plate 40: Internal shot of Room 4, within outbuilding at Cefnhirfynydd Isa, Glasfryn, Conwy - from the south - 1.00m scale



Plate 41: Internal shot of Room 4's ceiling, within outbuilding at Cefnhirfynydd Isa, Glasfryn, Conwy - from the south - no scale



Plate 42: Internal shot of Room 4 western elevation, within outbuilding at Cefnhirfynydd Isa, Glasfryn, Conwy - from the south - 1.00m scale



Plate 43: Internal shot of Room 4 eastern elevation, within outbuilding at Cefnhirfynydd Isa, Glasfryn, Conwy - from the south - 1.00m scale



Plate 44: Breached western wall of Room 4 western elevation, within outbuilding at Cefnhirfynydd Isa, Glasfryn, Conwy - from the south - 1.00m scale



Plate 45: Context shot of Room 4 looking through to Room 3, within outbuilding at Cefnhirfynydd Isa, Glasfryn, Conwy - from the south - 1.00m scale

8.0 SOURCES

Maps.

British Geological Survey (2021) *Geology of Britain Viewer*. Available at: <https://mapapps.bgs.ac.uk/geologyofbritain/home.html> (Accessed: 02 Dec 2021).

Ordnance Survey Open Data maps SH NE94, NW94, SE94, SW94.

Secondary Sources

Historic England: *Understanding Historic Buildings: a guide to good recording practice* (2016)

Chartered Institute for Archaeologists, 2014: *Standard and Guidance for the Archaeological Investigation and Recording of Standing Buildings or Structures*

McCullough, A. E., Martin, C. H. R., and Bayliss, N., (2021) *Polygonisation of Traditional Farm Buildings in Denbighshire and eastern Conwy*, Clwyd and Powys Archaeological Trust