

CPAT Report No 1059

Moel y Gaer Hillfort, Llantysilio, Denbighshire

ARCHAEOLOGICAL EXCAVATION



THE CLWYD-POWYS ARCHAEOLOGICAL TRUST

CPAT Report No 1059

Moel y Gaer Hillfort, Llantysilio, Denbighshire

ARCHAEOLOGICAL EXCAVATION

I Grant

November 2010

Report for Denbighshire Countryside Service



The Clwyd-Powys Archaeological Trust

7a Church Street, Welshpool, Powys, SY21 7DL

tel (01938) 553670, fax (01938) 552179




© CPAT 2010

CPAT Report Record

Report and status

CPAT Report Title	Moel y Gaer Hillfort, Llantysilio: Archaeological Excavation		
CPAT Project Name	Moel y Gaer		
CPAT Project No	1687	CPAT Report No	1059
Confidential (yes/no)	No	draft/final	Final

Internal control

	name	Signature	date
prepared by	I. Grant		30/11/2010
checked by	N.W. Jones		30/11/2010
approved by	R.J. Silvester		30/11/2010

Revisions

no	date	made by	checked by	approved by

Internal memo

The Clwyd-Powys Archaeological Trust

7a Church Street Welshpool Powys SY21 7DL

tel (01938) 553670, fax 552179

© CPAT

CONTENTS

SUMMARY

1 INTRODUCTION

2 EXCAVATION

3 FINDS

4 CONCLUSIONS

5 ACKNOWLEDGEMENTS

6 REFERENCES

APPENDIX 1: POST-EXCAVATION AND PUBLICATION

APPENDIX 2: SITE ARCHIVE

SUMMARY

In September 2010, the Field Services Section of the Clwyd-Powys Archaeological Trust (CPAT), working on behalf of Denbighshire Countryside Service, undertook an archaeological evaluation within the scheduled area of Moel y Gaer Hillfort (DE 126), near Llantysilio. Moel y Gaer is part of Llantysilio Mountain, occupying a minor summit (SJ 1669546376) between the more prominent summits of Moel Morfydd and Moel Gamelin. The work formed part of the Heather and Hillforts project, with funding in part from the Heritage Lottery Fund and Cadw. During the two-week excavation provision was made for accommodating local volunteers, some of whom were from the Heather and Hillforts archaeology group.

There had been no previous archaeological excavations on the site, although detailed topographical and geophysical surveys were conducted as part of the Heather and Hillforts project. The present project was designed to investigate an area where the geophysical survey had identified a range of features, including two roundhouses and a possible rectangular structure, with the objective of assessing the nature, significance and vulnerability of any surviving archaeological deposits. The hillfort has been under threat from erosion caused by illegal off-road use for a number of years and the results from the excavation will assist in the future management of the site.

The excavation investigated an area measuring 20m by 3m, within which the remains of two successive roundhouses were identified, indicating at least two phases of occupation. The earlier structure survived as a narrow drip gully around 7m in diameter which had been partly overlain by a levelled platform for a later roundhouse of similar dimensions.

The excavation results demonstrated that there is good preservation of significant archaeological deposits within the interior of the hillfort. However, the minimal depth of the overburden across the site is testament to the fragile nature of the survival of the archaeological resource.

1 INTRODUCTION

- 1.1 The Field Services Section of the Clwyd-Powys Archaeological Trust (CPAT) was invited by Denbighshire Countryside Service (DCS) to undertake an archaeological evaluation within the scheduled area of Moel y Gaer Hillfort (DE 126), near Llantysilio. The work forms part of the Heather and Hillforts project, with funding in part from the Heritage Lottery Fund and Cadw.
- 1.2 Moel y Gaer hillfort is located on the ridge of Llantysilio Mountain, occupying a minor crest (SJ 1669546376) between the more prominent summits of Moel Morfydd and Moel Gamelin.
- 1.3 The hillfort is surrounded by a single rampart enclosing an area of approximately 0.95 ha. The rampart is most prominent on the northern and eastern sides of the hillfort where an external ditch is also evident. There is a single entrance on the eastern side which has an inturned corridor. Although the hillfort occupies a minor summit and is overlooked from hills to the east and west it has a commanding view over a col which creates a pass between the valley of the Dee to the south and ultimately that of the Clwyd to the north, and is likely to have been an important routeway. The hillfort may therefore have been positioned to control an important crossing point. The antiquity of the route is attested by the presence of braided holloways across the col which indicate how the trackway has shifted over time.
- 1.4 As part of the Heather and Hillforts project a condition survey of the hillfort was conducted by CPAT in 2004 (Jones 2004), followed by detailed topographical and geophysical surveys, both conducted by Engineering Archaeology Services (EAS) in 2006 and 2009 respectively (Figs 3-5; Brooks and Laws 2007; 2009). These surveys identified around twenty possible roundhouses, eleven of which had earthwork remains in the form of levelled platforms. The geophysical survey also identified possible internal tracks and two potential rectangular structures (Brooks and Laws 2009).



Fig. 1. View of Moel y Gaer from the north-west showing the threat posed by the use of off-road vehicles. Photo CPAT 06-c-0373

- 1.5 Prior to the present project there had been no previous archaeological excavations on the site and so the nature, depth and extent of any significant archaeological deposits were unknown. The condition survey of 2004 highlighted the vulnerability of the site as a result of illegal off-road use (see Fig. 1), as well as the presence of a footpath which runs through the entrance and across the western rampart. The potential for further damage to the interior of the hillfort led to the present evaluation which was designed to investigate an area where the geophysical survey had identified a range of features, including two roundhouses and a possible rectangular structure. The objective was to assess the nature, significance and vulnerability of any surviving archaeological deposits.
- 1.6 The excavations were undertaken over a two-week period in late September and early October 2010 with the assistance of up to seven local volunteers, some of whom were from the Heather and Hillforts archaeology group, coordinated by Miss Samantha Williams, the Hillforts Conservation Officer (Fig. 2). A number of guided walks were also organised by DCS to coincide with the excavations, which were also visited by the Hillforts Focus Group.



Fig. 2 Volunteers assisting with the removal of the initial overburden, with Moel y Gamelin in the background. Photo CPAT 3175-0005

- 1.7 Scheduled Monument Consent for the excavations was received from Cadw, following an application by DCS. The site is also located within a Special Area of Conservation (SAC) and all of the work carried out during the project was undertaken with the cooperation and permission of the Countryside Council for Wales (CCW).

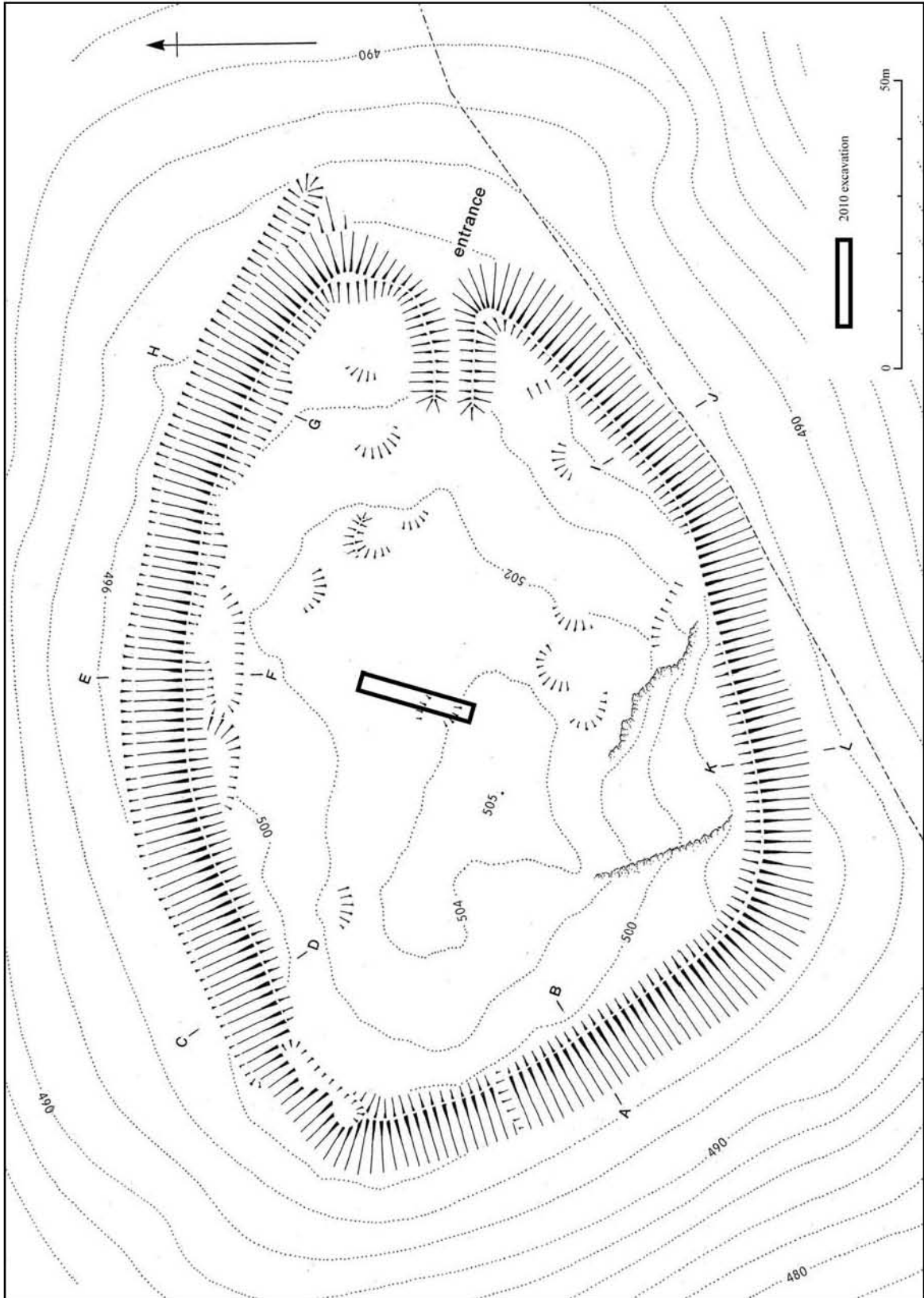


Fig. 3 Plan of Moel y Gaer hillfort showing the location of the 2010 excavation
(based on a survey by EAS, redrawn by Brian Williams for DCS).

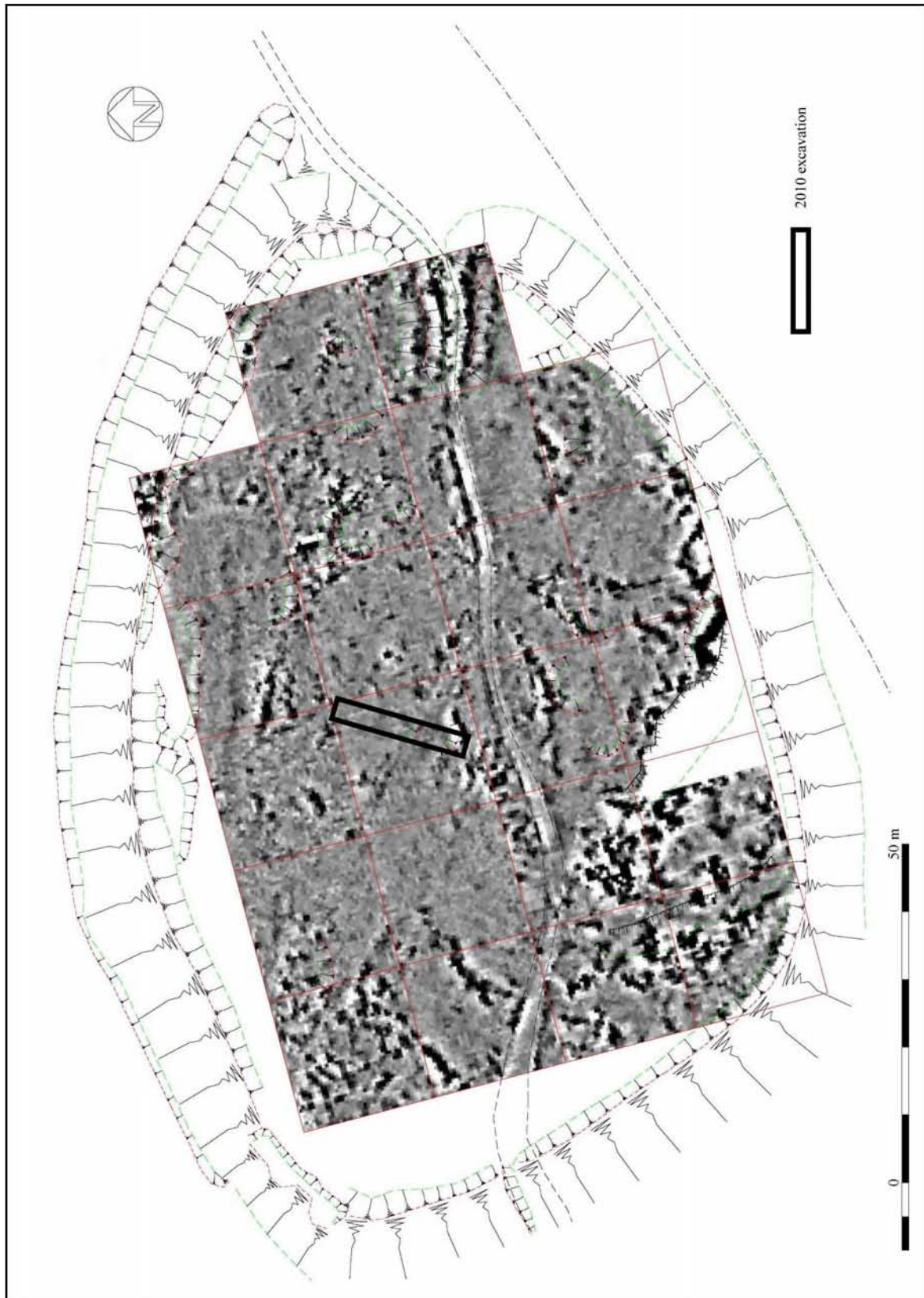


Fig. 4 The location of the 2010 excavation in relation to the 2009 magnetometer survey by EAS. Reproduced by courtesy of EAS

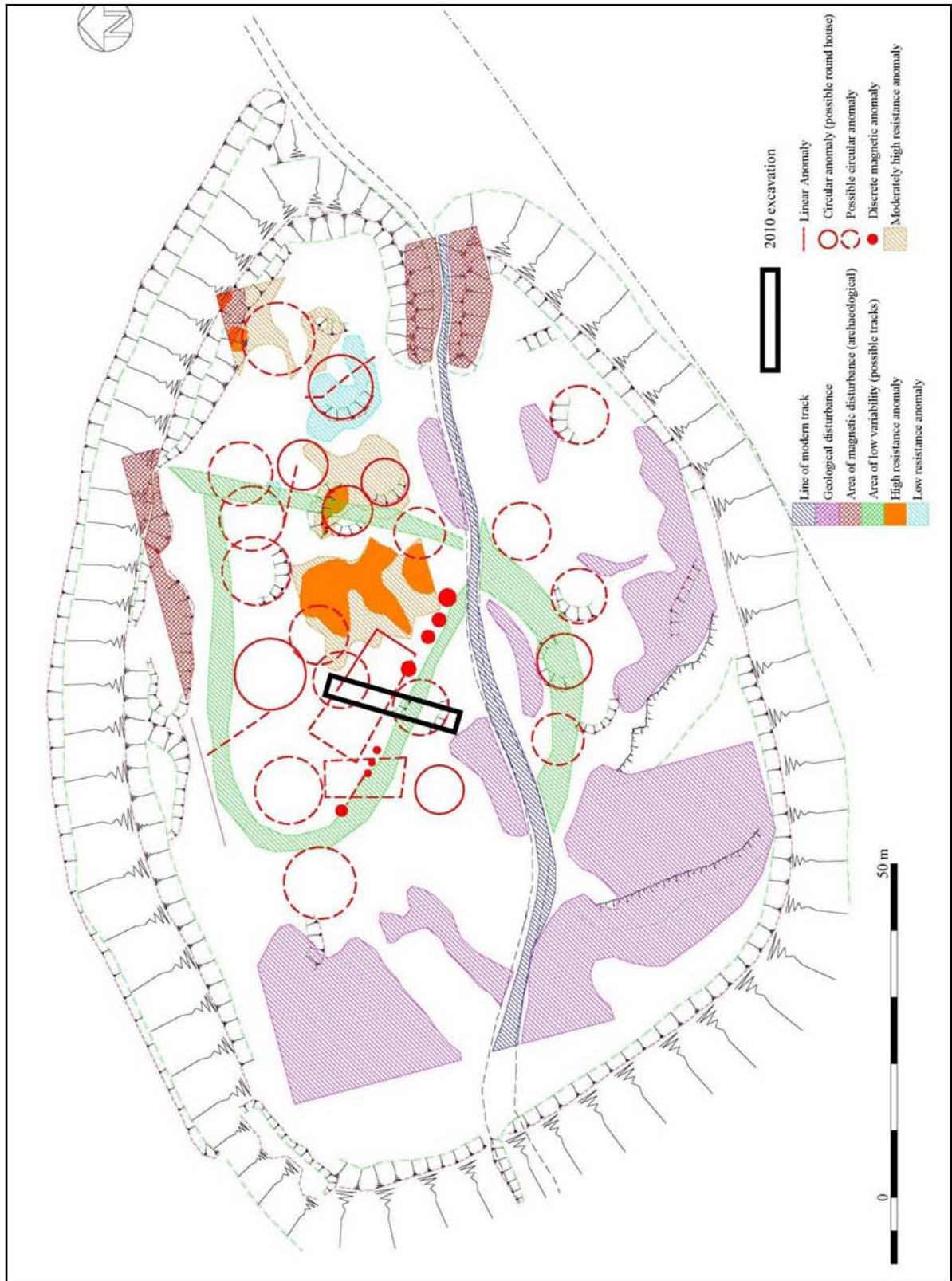


Fig. 5 The location of the 2010 excavation in relation to the interpreted results of the 2009 geophysical survey by EAS.
Reproduced by courtesy of EAS

2 EXCAVATION

- 2.1 A single trench was excavated by hand, measuring 20m by 3m, and orientated north-north-east by south-south-west. As already noted, this was located to investigate an area where the geophysical survey had identified a number of potentially significant features, including two roundhouses, a possible rectangular structure and a trackway. One of the project objectives was to establish the relationship between these features to provide a basis for differentiating different phases of occupation. The sampling strategy adopted during the excavation was one of minimal intervention in order to preserve the archaeological resource. Samples for palaeoenvironmental analysis and potential radiocarbon dating were taken from key features and occupation deposits (see Appendix 2) which, together with stratigraphic evidence, could assist with the phasing of the site. All excavated material was stored adjacent to the trench for later reinstatement by Denbighshire Countryside Service.
- 2.2 Numbers in brackets in the following text refer to the individual contexts which form part of the site archive, a summary of which is provided in Appendix 2. The archive has been deposited with the regional Historic Environment Record, curated by CPAT in Welshpool, while the only find has been deposited with Denbighshire County Council.
- 2.3 The initial overburden, consisting of heather scrub and an underlying dark brown, gritty, silt-clay, up to 80mm thick (01), was removed by hand. Beneath this was a deposit of peat (02) around 80mm thick which extended across the whole trench. Once this deposit was removed the contour of a raised and levelled platform was immediately apparent at the southern end of the trench (see Figs 3 and 4). Other shallow features, indicated by areas of a dark peaty fill (probably the sunken remains of deposit 02), were also noted at this level, together with a slab of stone (40).
- 2.4 As the excavation proceeded it became apparent that the occupation deposits were associated with two structures, one overlying the southern edge of the other.



Fig. 6. Gully 15 partially excavated with overlying deposit 09/22 still in situ to the right.
Photo CPAT 3175-0053



Fig. 7 The fully excavated section of 'drip' gully 15 viewed from the west with occupation deposit 23 in situ. Photo CPAT 3175-0094

Roundhouse 1

- 2.5 In the northern half of the trench the remains of a roundhouse (39) were revealed within which there was evidence for in-situ occupation levels comprising layers of silty clays with charcoal flecking which had the appearance of having been trampled. The roundhouse was defined by a curving gully with an internal diameter of around 7m, the north and south sides of which were revealed within the excavated area (15 and 32). The gully was up to 0.4m wide and 0.2m deep and on the north side contained three fills (14, 25 and 26), each of which contained edge-set stones (see Figs 5, 6 and 7), while the primary fill (26), a fine grey silty clay, also contained charcoal flecking. The northern side of the gully contained a single fill (31), consisting of a dark, peaty silty-clay.
- 2.6 Within the interior of the roundhouse several features appeared to be contemporary with its use. An irregular, butt-ended gully, aligned east-south-east to west-north-west, was only 20mm deep and varied from almost 1.0m in width to 0.4m at the limit of excavation. The fill (10) consisted of a dark, silty peat containing charcoal. Given its position and orientation it is possible that this represents an internal division within Roundhouse 1. A second feature, extending beyond the limits of excavation, was a pit or butt-ended gully (13), 0.8m wide and 80mm deep, with a basal fill consisting of a grey, clay-silt (28) containing lumps of charcoal.
- 2.7 Between these two features was what may be a post-pad, consisting of an earth-fast, flat stone on top of which several other flat stones had been laid (Fig. 10). The excavations revealed no evidence for any further post-settings, although it is possible that post-holes were located beyond the excavated area. There was also no evidence for an entrance, although given the prevailing winds this is likely to have been on the unexcavated eastern side of the roundhouse.
- 2.8 The two features, together with the drip gully surrounding the roundhouse, had been cut through a deposit of small stones within a matrix of grey, silty-clay, with charcoal flecking (23), indicating what may be an earlier occupation layer which was also present beyond the structure to the north. The surface of the deposit had the appearance of having been trampled and is likely to represent a floor level within the roundhouse. This layer sealed an earlier deposit (24), a friable, gritty, mottled orange brown, silty-clay, which had been cut by the

southern side of the roundhouse gully (32). The layer was not excavated but is possibly the same as a similar deposit (29) which extended beyond Roundhouse 1 to the south, beneath Roundhouse 2.



Fig. 8 Gully 32 viewed from the north-east following the removal of material forming the platform of the later roundhouse (17). Photo CPAT 3175-0098



Fig. 9. Roundhouse 1 (39) viewed from the north with gully 15 in the foreground. Photo CPAT 3175-0096



Fig. 10. Stone pad (40) and pit/gully 13 viewed from the west. Photo CPAT 3175-0093

- 2.8 Two sub-circular features (35 and 36) were identified to the north of Roundhouse 1, both characterised by fills of dark peaty silts containing edge set shale stones. Neither feature was investigated owing to time constraints. A third pit (34), extended beyond the limits of excavation.
- 2.9 Sealing deposit 23 was a layer of firm, turf-like, pale grey, silty-clay (09 and 22) up to 80mm thick (Fig. 6). This also partially covered the base of the platform for Roundhouse 2 (17). Samples were retained for further possible future analysis.

Roundhouse 2

- 2.10 The northern side of the gully surrounding Roundhouse 1 was sealed beneath the stony make-up forming a raised platform for the construction of Roundhouse 2, which was also around 7m in diameter. The southern side of the platform had been cut into the underlying bedrock (18), creating a rock-cut scarp approximately 0.3m high, the spoil from which would have been utilised in the primary construction of the platform. At the base of the scarp was a narrow, curving gully (38), 0.1m wide and 0.1m deep, which had also been cut into the bedrock (Fig. 11).



Fig. 11 The rock-cut gully 38 at the rear of the Roundhouse 2 viewed from the east, showing the exposed bedrock within the interior and the remnants of layer 21. Photo CPAT 3175-0100

- 2.11 Within the interior the exposed bedrock was levelled by a series of deposits, initially comprised of fragmented shale (21) towards the rear of the platform, with the central area being predominantly a deposit of shale chippings set in a matrix of grey, silty-clay (20). In turn this was sealed by a layer of firm, small chippings set in reddish-brown silty-clay (19). This overlay another deposit (30) which sealed the drip gully (32) associated with Roundhouse 1. These stoney deposits had the appearance of having been trampled and presumably formed the floor within the roundhouse. All of the layers contained charcoal flecking, attesting to evidence of occupation, and a sample of deposit 19 was retained for possible further analysis. It was evident that these deposits sealed an earlier occupation layer (29) (see section 2.8). As with Roundhouse 1 there was no evidence for any internal post-settings, or an entrance.
- 2.12 To the rear of the platform a thin lens of peaty soil (05) covered the stoney layers (20 and 21) within the roundhouse, perhaps indicating a period of disuse. This was sealed by a final occupation layer (06) consisting of trampled, fragmented shale and stone chippings within a matrix of buff, gleyed, silty-clay with charcoal flecking. At the northern end of the platform a deposit of compacted shale and peat (27) formed the final layer associated with the platform, just extending into the interior of Roundhouse 1.

- 2.13 Also sealing deposit 05 was a mottled, clay-rich deposit with charcoal flecking (04) forming a 1.5m-wide band which respected the rock-cut edge on the southern side of the platform. The composition of the deposit was unusual as there is no naturally occurring clay within the immediate area. Speculatively, this could represent wattle and daub which had decayed in situ. These later deposits post-date Roundhouse 2 and it is possible that they are associated with the reuse of the platform, perhaps as part of a later structure for which no definite structural elements could be recognised.



Fig. 12. The platform for Roundhouse 2 viewed from the north-east after initial cleaning.
Photo CPAT 3175-0008

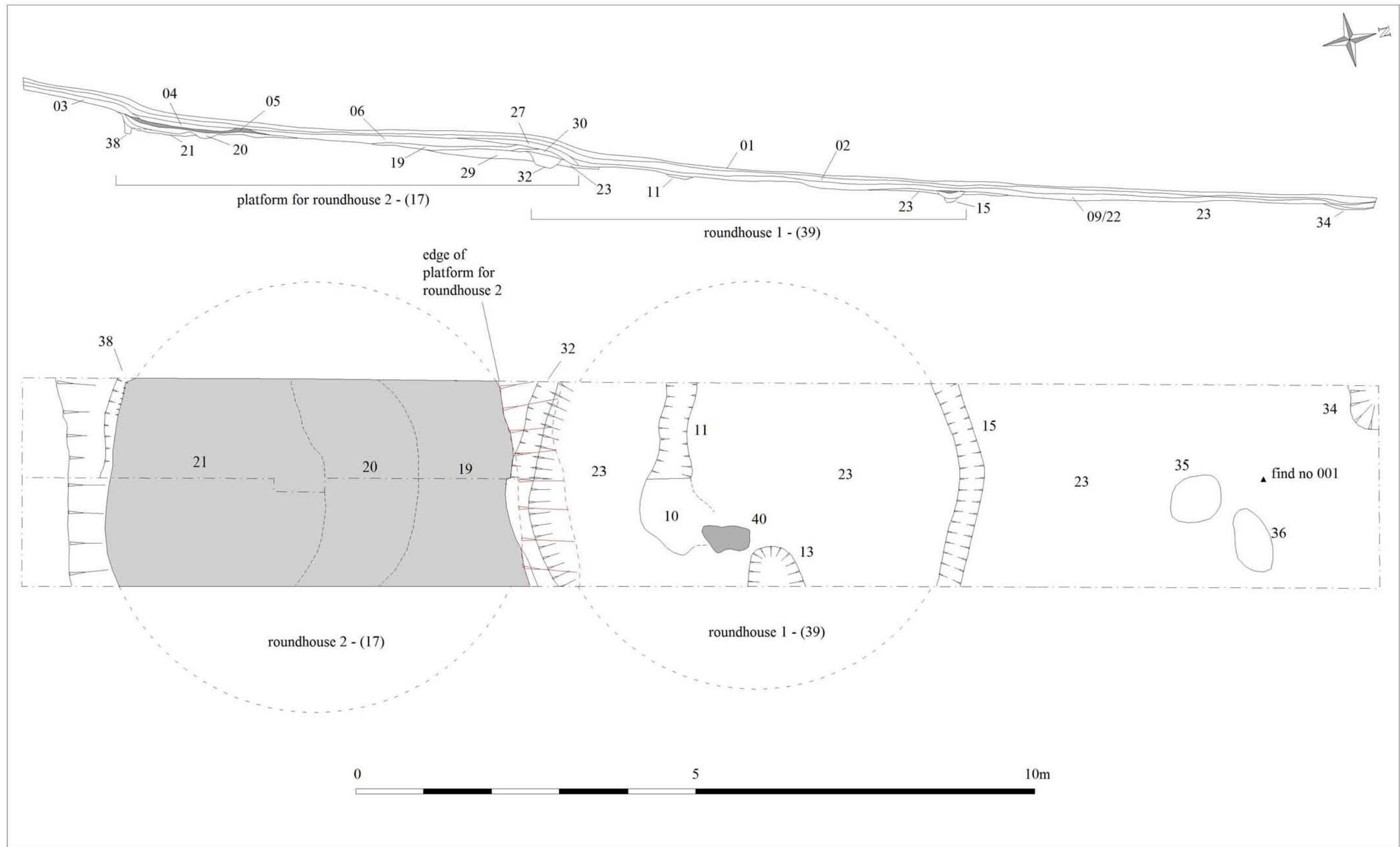


Fig. 13 Plan and east-facing section of the excavation.

3 FINDS

- 3.1 The only artefact recovered during the excavation consisted of a small, rounded stone (Find 001; Fig. 14), measuring 25mm thick, 110mm long and 70mm wide, recovered from an occupation deposit (23) to the north of Roundhouse 1 (see Fig. 13). The fine-grained sandstone has been smoothed on one side and either end is rough, with numerous peck marks. The stone does not correspond with the local geology, which is predominantly shale and slate, and has clearly been imported to the site. It seems likely that the artefact was used both as a rubbing stone and a hammerstone.



Fig. 14 Find no. 001 – Possible Hammer-stone / Rubbing-stone. Photo CPAT 3175-0101

4 CONCLUSIONS

- 4.1 It is clear from the excavations that there is good in-situ preservation of significant archaeological deposits within the interior of Moel y Gaer hillfort. However, the shallow depth of the overburden across the site, specifically on the lower terrace where the combined depth of the heather, topsoil and late peat formation is only 0.15m, is testament to the fragile nature of the surviving archaeological resource.
- 4.2 The excavations revealed evidence for several phases of activity, including at least two roundhouses, each around 7m in diameter, which had been built on top of earlier occupation layers which were not investigated during the excavation. The earlier roundhouse was defined by a curving drip gully, with no sign of an entrance, although this is perhaps likely to have been on the more sheltered eastern side, outside the excavated area. Internally, an irregular gully may indicate the position of a partition, while a possible post-pad was the only evidence for the structure of the roundhouse.
- 4.3 In a later phase of activity another roundhouse was constructed immediately to the south, built on a platform which had been cut into the bedrock on the south side and levelled by deposits of stony material to the north, sealing part of the gully surrounding the earlier structure. Again, there was no indication of an entrance or any evidence for the construction of the roundhouse, apart from a cut-rock drip gully on the south side. There was some evidence to suggest a period of disuse, in the form of a thin peat lens, followed by a later phase of occupation on the same platform which could have incorporated wattle-and-daub walling, although with no other indication for a structure.
- 4.4 Finally, although the geophysical survey suggested the possibility of a rectangular building orientated east to west across the axis of the excavated area, no evidence for such a building was uncovered during the excavations. It is possible, however, that this could be associated with an earlier phase of activity, sealed beneath a occupation layers underlying the earliest roundhouse.

5 ACKNOWLEDGEMENTS

- 5.1 The writer would like to thank the following people for their help and assistance during the project: Richard Hankinson and Nigel Jones , CPAT; Fiona Gale (Denbighshire County Archaeologist), Rhun Jones, Deborah Mead, Helen Mrowiec and Samantha Williams; Heather and Hillforts Landscape Partnership Scheme and finally the volunteers; Pat Daley, Felicity Davies, Stephanie Heron, Steven Jones, Keith Lowery, Tony King and Terry White.

6 REFERENCES

- Brooks, I.P., and Laws, K., 2007. *Heather and hillforts survey report: Moel y Gaer Llantysilio*. EAS Client Report 2007/01.
- Brooks, I.P., and Laws, K., 2009. *Moel y Gaer, Llantysilio: Geophysical Survey*. EAS Client Report 2009/10
- Jones, N.W., 2004. *Heather & Hillforts. Archaeological Condition Survey*. CPAT Report No. 654.

APPENDIX 1

POST-EXCAVATION RESEARCH DESIGN

Summary of proposals

The preliminary assessment of the site archive has now been completed according to the *Management of Archaeological Projects* (English Heritage, 1991), and an interim report has been produced summarising the results from the excavation (see main report).

Assessment of archaeological potential

The results from the preliminary assessment have demonstrated that the site archive has some potential for revealing significant information which could aid the interpretation and phasing of the site and further advance the understanding of occupation in the region during the prehistoric, medieval and post-medieval periods. The research potential is summarised below:

Site archive

The drawn and written record contains the primary data relating to the site and further analysis will be required to integrate these data with information from the palaeoenvironmental record in order to produce a phased model of the archive. The lack of artefactual data means that the dating of features will depend to a large extent on radiocarbon dating.

Artefactual record

The excavations produced only one artefact; a rubbing stone and/or hammer stone (Find 001).

Radiocarbon dating

Bulk soil samples, containing peat and charcoal, together with individual charcoal samples were taken from a number of excavated features and occupation layers. Radiocarbon dating is proposed for a number of samples from key contexts, which has the potential for complementing the stratigraphic evidence and assisting with phasing the site. The charcoal will be identified by a specialist before submission for dating.

Palaeoenvironmental record

The bulk samples are likely to preserve palaeoenvironmental evidence in the form of carbonised plant macro remains. Specialist analysis has the potential for providing information on the fauna and flora of the site within the environs of the Llantysilio Mountain range. These results could then be viewed in context alongside a similar study that has already been undertaken as part of the RCHAMW Uplands Initiative Survey on the Clwydian Range and Heather and Hillforts Landscape Partnership Scheme.

A full list of available samples is listed in the Finds Catalogue (See Appendix – Site Archive).

There are samples from key areas of both phases of the site:

Roundhouse 1

Primary fills of both drip gullies (15) & (32)

Primary fills of internal features, gully (11) and pit (13)

Occupation layer (29), underlying Hut Platform Phase II and also truncated by Phase I drip gully (32).

Roundhouse 2

Construction layer (19), a context sealed between the numerous layers of the platform.

Deposit (06), a final build (perhaps occupation layer) from the surface of the platform

Deposit (22), occupation layer probably contemporary with Phase II and sealing the earlier roundhouse on the lower terrace.

Proposed work programme

The anticipated work programme includes the following elements:

- 1 *Administration*
Project management, the production of a final excavation report, written by the excavator, Ian Grant, CPAT, incorporating the specialist analyses and radiocarbon dating, to be published in *Archaeology in Wales*. Also the updating of the CPAT website.
- 2 *Site Archive*
More detailed studies of the drawn and written records, integrating radiocarbon dating results and stratigraphic evidence, to produce a phased interpretation of the archaeology.
- 3 *Artefact analysis*
Possible study and illustration of the hammer-stone/rubbing-stone (Find no. 001).
- 4 *Radiocarbon dating*
Further radiocarbon dates may be required as part of the post-excavation programme, depending on the results of the palaeoenvironmental analyses. The charcoal will need to be identified prior to submission for dating.
- 5 *Palaeoenvironmental analysis*
Bulk soil samples were taken from key excavated features and occupation layers that may provide palaeoenvironmental data relating to the site and its environs. A preliminary assessment of the samples to be undertaken prior to further analysis.
- 6 *Archive*
Deposition of site archive with the regional HER maintained by CPAT in Welshpool, and finds with the Heather and Hillforts Landscape Partnership Scheme.

Proposed timing**End products**

- 1 Note in *Archaeology in Wales* 2010.
- 2 Summary report on CPAT website – December 2010.
- 3 Site archive deposited with regional HER – December 2010.
- 4 Artefacts/Samples to be deposited with Heather and Hillforts Landscape Partnership Scheme – December 2010.
- 5 Full excavation report for *Archaeology in Wales* following completion of post-excavation analysis and specialist reporting – December 2011.

APPENDIX 2**SITE ARCHIVE**

100 digital photographs, CPAT Film No 3175
 Photographic catalogue
 40 context record forms
 Contexts register
 3 A1 drawings
 6 A4 drawings
 Drawings register
 Finds register

Contexts Register

Context	Type	Comment
01	Deposit	Topsoil and heather overburden.
02	Deposit	Dark peaty soil throughout the extent of the trench – below (01).
03	Deposit	Fragmented shale and orange silty clay (erosion debris) at south end. Below (04).
04	Deposit	Mottled yellow clay silt, deposited in a linear form (E to W). Possible decayed wattle and daub at south end. Below (02).
05	Deposit	Thin band of dark peaty soil across south end of platform of Roundhouse 2. Below (03 & 04).
06	Deposit	Fragmented shale and buff/gleyed silty clay. Roundhouse 2 (17) secondary platform construction material. Below (27).
07	Fill	Dark silty peat within shallow feature (08). Below (02).
08	Cut	Shallow depression probably not archaeological.
09	Deposit	Turfy pale gleyed silt/shale and charcoal. Late occupation layer same as 22. Below (02). Above Roundhouse 1 (39).
10	Fill	Dark silty peat with mottled yellow clay within shallow gully (11). Below (09/22).
11	Cut	Possible internal gully for Roundhouse 1 (39). Cuts (23).
12	Fill	Dark silty peat with mottled yellow clay, upper fill within pit feature (13). Below (09/22).
13	Cut	Pit within Roundhouse 1 (39). Cuts (23).
14	Fill	Dark silty peat with mottled yellow clay, upper fill within gully (15). Below (09/22).
15	Cut	External curvilinear drip gully for Roundhouse 1 (39). Cuts (23).
16	Deposit	Isolated dark peat patch. External to drip gully 15. Could be a feature contemporary with Roundhouse 1 (39).
17	Structure	Possible rock cut roundhouse platform with apron to the north.
18	Natural	Deposit of shale and orange/yellow silt and chippings.
19	Deposit	Firm chippings in reddish-brown silt. One of the primary construction layers for roundhouse 2 (17) platform. Below (06).
20	Deposit	Shale chippings set in a greasy grey clay silt. One of the primary construction layers for Roundhouse 2 (17). Below (19).
21	Deposit	Concentrated layer of stone blocking and shale. One of the primary construction layers for Roundhouse 2 (17). Below (20).

22	Deposit	Turfy buff/gleyed silty clay with occasional shale and charcoal flecking. Late occupation layer, same as 09, mid and north section of trench. Below (02). Above Roundhouse 1 (39).
23	Deposit	Firm trampled grey silty clay with chippings and charcoal flecking. Occupation layer associated with roundhouse 1 (39). Below (09/22).
24	Deposit	Friable and gritty mottled orange/brown silt. Earliest occupation layer below (23).
25	Fill	Milky grey silty clay with pitched on edge stones. Secondary fill of drip gully (15) – Roundhouse 1 (39). Below (14).
26	Fill	Fine grey silty clay with charcoal flecking. Primary fill of drip gully (15). Roundhouse 1 (39). Below (25).
27	Deposit	Fairly firm fragmented shale with peaty soil. Either final construction layer of Roundhouse 2 (17) platform apron or platform erosion deposit. Below (02).
28	Fill	Milky grey clay silt. Primary fill of pit (13) within Roundhouse 1 (39). Below (12).
29	Deposit	Friable & gritty mottled orange/brown silt, charcoal flecked. Beneath Roundhouse 2 (17) platform and cut by Roundhouse 1 drip gully (32). Similar to occupation layer (24).
30	Deposit	Thin band of silty clay and firm chippings sealing drip gully (32). Below (19).
31	Fill	Dark peaty silty clay, fill of drip gully (32). Below (30).
32	Cut	External curvilinear drip gully for Roundhouse 1 (39). Cuts (23) and (24).
33	Fill	Dark peaty silty clay. Fill of shallow scoop (34). Below (09/22).
34	Cut	Shallow scoop at north-end of trench. Cuts occupation layer (23).
35	Deposit	Circular dark peaty stain, north of/external to Roundhouse 1 (39). Possible feature. Below (09/22).
36	Deposit	Sub-circular dark peaty stain with edge-set stones, adjacent to (35). Possible feature. Below (09/22).
37	Fill	Fine orange/brown silty clay. Fill of rock-cut gully (38). Partially sealed by construction layer (21) of Roundhouse 2 (17) platform.
38	Cut	Narrow curvilinear drip gully for Roundhouse 2 (17). Cuts natural rock (18).
39	Structure	Phase 1 roundhouse defined by drip gullies (15) and (32).
40	Structure	Possible stone pad for post setting, roundhouse 1 (39). Below (09/22).

Drawings Register

No	Size	Scale	Contexts	Comment
1	A1	1:20		Pre-excavation (post-initial clean) plan of trench
2	A4	1:20	20,21,38	Post excavation plan of south end of trench illustrating rear of Roundhouse 2 rock-cut platform and construction layers.
3	A4	1:20	06,10, 11,19,20,23,24	Post excavation plan of mid-section of trench illustrating construction layers of Roundhouse 2 platform sealing the drip gully (32) of Roundhouse 1.
4	A4	1:20	09,12,13, 14,15,22,23,40	Part-excavation plan of drip gully (15), Roundhouse 1. Post-pad 40 and remains of later occupation layers 09/22.

5	A4	1:20	19,23,29,30,31,32	Part-excavation plan of Roundhouse 2 apron revealing outline of Roundhouse 1 drip gully (32).
6	A1	1:20	01-38	East facing section of excavated trench.
7	A4	1:20	23,29,32	Part post-excavation plan of drip gully (32), Roundhouse 1.
8	A4	1:20	13,15	Post excavation plan of drip gully (15) and pit (13) in Roundhouse 1 (39).
9	A1	1:20	01-40	Composite plan of the excavated trench illustrating the extents of both Roundhouse 1 (39) and the platform for Roundhouse 2 (17).

Finds catalogue

Find No.	Context	No	Comments
001	23	1	Possible Hammer/rubbing stone
002	06	1 bag	Soil and charcoal sample. Top of platform (17) – Roundhouse 2
003	10	1 bag	Soil and charcoal sample. Fill of internal gully [11] – Roundhouse 1
004	22	10 L	Soil and charcoal sample. Late occupation layer – Roundhouse 2
005	31	10 L	Soil and charcoal sample. Fill of drip gully [32] – Roundhouse 1
006	29	20 L	Soil and charcoal sample. Occupation layer pre-dating Roundhouse 1 and 2
007	28	10 L	Soil and charcoal sample. Primary fill of pit [13] – Roundhouse 1
008	26	5 L	Soil and charcoal sample. Primary fill of gully [15] – Roundhouse 1
009	19	10 L	Soil and charcoal sample. Construction material in platform (17) – Roundhouse 2