

C.P.A.1

1. To be returned to Cadw,
Policy and Administration-Designations Section

Ref: A-CAM 001-01-7817-00

2. To be retained

MULTIPLE = 110474
PRN

A = PRN 115061
B = PRN 115062
C = PRN 110475

D = PRN 110476
E = PRN 110477
F = PRN 110478

NEW ENTRY TO THE SCHEDULE OF MONUMENTS COMPILED AND MAINTAINED BY THE NATIONAL ASSEMBLY FOR WALES UNDER SECTION 1 OF THE ANCIENT MONUMENTS AND ARCHAEOLOGICAL AREAS ACT 1979.

Name of Monument: Storey Arms Anti-Invasion Defences

Ordnance Survey Map References

County/County Borough:	Powys	1 inch/1:50,000 Sheet No:	160
Community:	Glyn Tarell	6 inch/1:10,000 Sheet No:	SN91NE
Number of Monument:	BR337(POW)	25 inch/1:2,500 Sheet No:	SN9819
Class:	Medieval and Post Medieval Secular	N.G.Reference No:	SN 988 198

DESCRIPTION OF MONUMENT AND ASSESSMENT OF ITS IMPORTANCE.

The monument consists of anti-invasion defences, dating to the early period of World War II (AD 1940-41), that formed part of a Western Command Stop Line, which ran from Storey Arms to Quakers Yard. The defences are located S of Storey Arms on either side of the A470 trunk road approximately 1km S of the pass summit, where the local topography forms a steep-sided, narrow and easily defended valley. The structures defend an upward position to the N. The defences consist of two pillboxes (Areas 'B' and 'C'), an infantry support trench (Area 'A'), a slit trench (Area 'D') and two alignments of anti-tank blocks (Area 'E' and 'F').

The monument is of national importance for its potential to enhance our knowledge of World War II anti-invasion practices. The monument is well preserved and is an important relic of actions taken against the perceived threat of a German invasion from Ireland. It retains significant archaeological potential, with a strong probability of the presence of associated archaeological features and deposits.

The scheduled area comprises the remains described and an area around them within which related evidence may be expected to survive. Area 'A' is centred on NGR SN 98827 19872, is rectangular and measures 20m NE-SW by 10m transversely. Area 'B' is centred on NGR SN 98853 19893, is rectangular and measures 10m E-W by 12m transversely. Area 'C' is centred on NGR SN 98811 19632 is square and measures 10m E-W by 10m transversely. Area 'D' is centred on NGR SN 98686 19505 is circular and measures 15m in diameter. Area 'E' is centred on NGR SN 98815 19538, is rectangular and measures 30m E-W by 5m transversely. Area 'F' is centred on NGR SN 98709 19442 is curvilinear and measures 200m NE-SW by 10m transversely.

The site of the monument is shown on the attached map.

Signed by authority of the Minister for Culture, Welsh Language and Sport on behalf of the Welsh Assembly Government.

03 November 2006

Matthew Coward
MATTHEW COWARD
A HIGHER EXECUTIVE OFFICER IN THE
NATIONAL ASSEMBLY FOR WALES



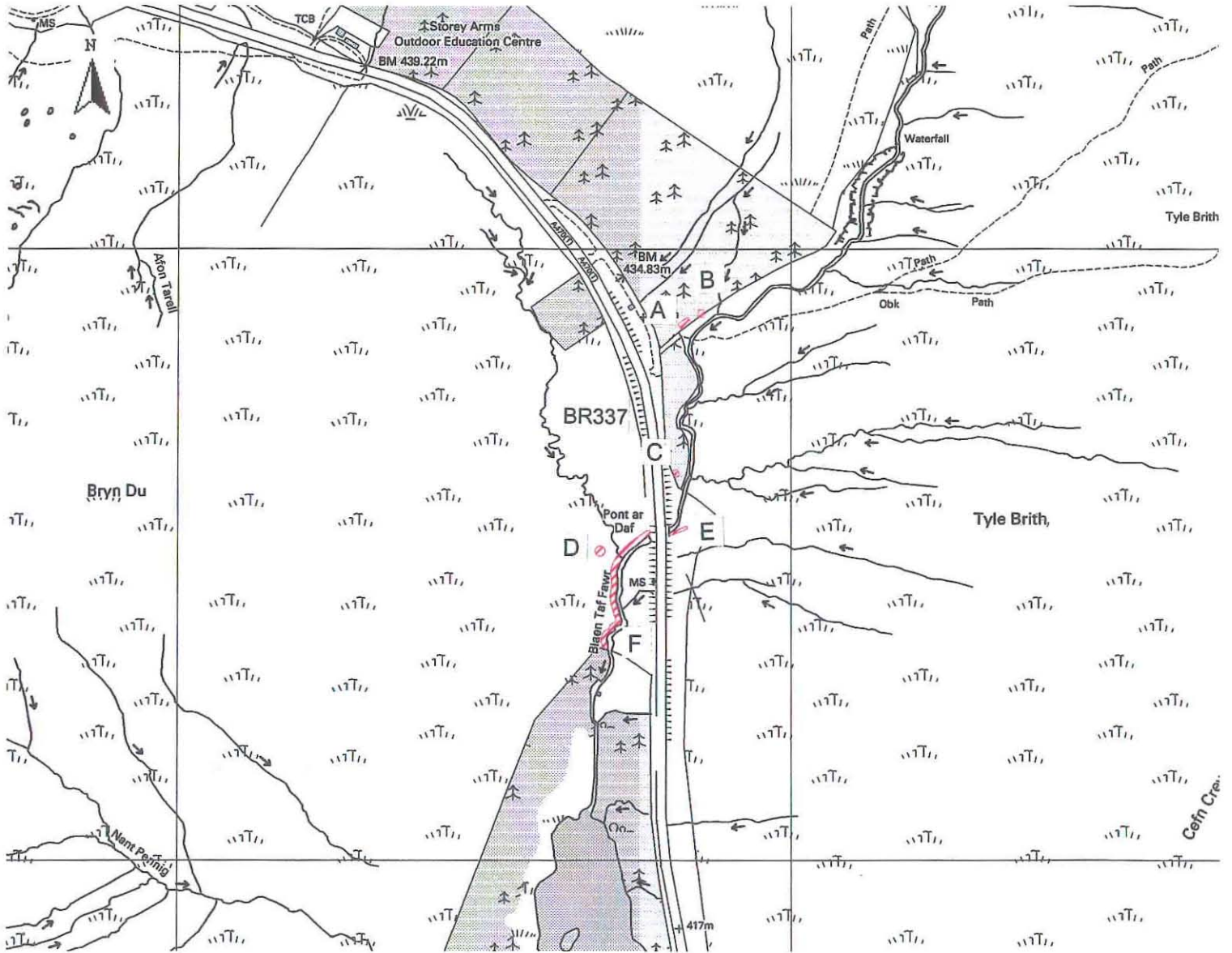
CADW

Welsh Historic Monuments

Ancient Monuments and Archaeological Areas Act 1979

Location maplet for SAM No. BR337

Storey Arms Anti-invasion Defences



Extract from Scale 1:10,000 Sheet SN91NE

File No: 7817

This is the Plan referred to in the Scheduling entry dated:.....

Authorised by the National Assembly for Wales to sign in that behalf *M. J. Williams*

Map based upon the Ordnance Survey map by the National Assembly for Wales with the the Permission of the Ordnance Survey on behalf of the controller of Her Majesty's Stationary Office © Crown Copyright. All rights reserved. Unauthorised reproduction infringes Crown Copyright and may lead to prosecution or civil proceedings Licence Number: GD272221.SAM data supplied by Cadw, National Assembly for Wales © Crown Copyright 2005

**CADW Scheduled Ancient Monument Record
SAM Information Section 1 (General Information)**

SAM No: BR337(POW)	AI No: 6	File No: 7817	Schedule Ref: 17/7817/BR337(POW)//
---------------------------	-----------------	----------------------	---

SAM Name: Storey Arms Anti-invasion Defences

	Traditional	Qualifier	NGR-X	NGR-Y	Scheduled:
NGR	SN 988 198	100	298800	219800	Yes
	1:50, 000	1:10, 000	1:2, 500		
Primary	160	SN91NE			

Additional

Unitary Authority(UA):
Powys

Community:
Glyn Tarell

Area(Ha): 0.27

Primary Class: Medieval and Post Medieval Secular

Additional Class:

Summary:

**CADW Scheduled Ancient Monument Record
SAM Information Section 1 (General Information)**

SAM No: BR337(POW)

SAM Name: Storey Arms Anti-invasion Defences

Archaeological History:

Events	Name	Date
--------	------	------

Sources:

Type	Collection	Author	Year
Descriptive text	AM7	Berry J	2005

Title: **Other:**

Type	Collection	Author	Year
Photograph	AM7	Berry J	2005

Title: **Other:**

Type	Collection	Author	Year
Plan: sketch	Cadw	Berry J	2005

Title: Sketch plan of items A, B and C **Other:** 1:100

**CADW Scheduled Ancient Monument Record
Archaeological Item Information**

Section 1: General

AI No: BR337E		AI Name: Anti-tank blocks (E group)	
Altitude(m): 425	Trust PRN:	Exdex PRN:	
Qualifier: 10	NGR-X:	NGR-Y:	
Sitetype (FMW): Anti-tank Obstacle			
Period General: Post-Medieval/Modern Specific: 2nd World War			Date:
Sitetype (Broad):		Sitetype (Narrow):	
Broad Class: Defence			
Components:			
Status: Scheduled Ancient Monument; National Park			
Form: Standing monument			Condition: Very Good
Proportion SCH: Complete		Survival within SCH. Area: Complete	
Summary:			

Section 1: General

AI No: BR337F		AI Name: Anti-tank blocks (W group)	
Altitude(m):	Trust PRN:	Exdex PRN:	
Qualifier: 10	NGR-X:	NGR-Y:	
Sitetype (FMW): Anti-tank Obstacle			
Period General: Post-Medieval/Modern Specific: 2nd World War			Date:
Sitetype (Broad):		Sitetype (Narrow):	
Broad Class: Defence			
Components:			
Status: Scheduled Ancient Monument; National Park; Public Right of Way			
Form: Standing monument			Condition: Good
Proportion SCH: Complete		Survival within SCH. Area: Almost complete	
Summary:			

**CADW Scheduled Ancient Monument Record
Archaeological Item Information**

Section 1: General

AI No: BR337A		AI Name: Infantry Support Trench	
Altitude(m): 440	Trust PRN:	Endex PRN:	
Qualifier: 10	NGR-X: 10	NGR-Y:	
Sitetype (FMW): Infantry support trench			
Period General: Post-Medieval/Modern Specific: 2nd World War			Date:
Sitetype (Broad):		Sitetype (Narrow):	
Broad Class: Defence			
Components:			
Status: Scheduled Ancient Monument; National Park; Access Land; National Trust Land			
Form: Roofed building			Condition: Good
Proportion SCH: Complete		Survival within SCH. Area: Complete	
Summary:			

Section 1: General

AI No: BR337B		AI Name: Pillbox	
Altitude(m): 450	Trust PRN:	Endex PRN:	
Qualifier: 10	NGR-X: 10	NGR-Y:	
Sitetype (FMW): Pillbox			
Period General: Post-Medieval/Modern Specific: 2nd World War			Date:
Sitetype (Broad):		Sitetype (Narrow):	
Broad Class: Defence			
Components:			
Status: Scheduled Ancient Monument; National Park; National Trust Land; Access Land			
Form: Roofed building			Condition: Good
Proportion SCH: Complete		Survival within SCH. Area: Complete	
Summary:			

**CADW Scheduled Ancient Monument Record
Archaeological Item Information**

Section 1: General

AI No: BR337C		AI Name: Pillbox	
Altitude(m): 430	Trust PRN:	Endex PRN:	
Qualifier: 10	NGR-X:	NGR-Y:	
Sitetype (FMW): Pillbox			
Period General: Post-Medieval/Modern			Date:
Specific: 2nd World War			
Sitetype (Broad):		Sitetype (Narrow):	
Broad Class: Defence			
Components:			
Status: Scheduled Ancient Monument; National Park			
Form: Roofed building			Condition: Good
Proportion SCH: Complete		Survival within SCH. Area: Complete	
Summary:			

Section 1: General

AI No: BR337D		AI Name: Slit trench	
Altitude(m): 433	Trust PRN:	Endex PRN:	
Qualifier: 10	NGR-X:	NGR-Y:	
Sitetype (FMW): Slit trench			
Period General: Post-Medieval/Modern			Date:
Specific: 2nd World War			
Sitetype (Broad):		Sitetype (Narrow):	
Broad Class: Defence			
Components:			
Status: Scheduled Ancient Monument; National Park			
Form: Earthwork			Condition: Good
Proportion SCH: Complete		Survival within SCH. Area: Almost complete	
Summary:			

CADW Scheduled Ancient Monument Record SAM Visit Description Text

SAM No: BR337(POW)	SAM Name: Storey Arms Anti-invasion Defences
---------------------------	---

Visit Date: 03/11/2005

Visited By: Berry J

Description Text: The monument consists of anti-invasion defences, dating to the early period of World War II (AD 1940-41), that formed part of a Western Command Stop Line, which ran from Storey Arms to Quakers Yard. The natural landscape was used as the main barrier against invaders during WWII, with a little help from strategically placed anti-tank obstacles such as this example. The monument is well preserved and is an important relic of actions taken against the serious threat of a German invasion from neutral Eire (now the Republic of Ireland). Specifically, this anti-tank obstacle was designed, with others, to protect the Welsh approaches to the industrial centres of the West Midlands.

The defences are located S of Storey Arms on either side of the A470, where the local topography forms a steep-sided, narrow and easily defended valley, approximately 1km before the summit of the pass on the S side. Full-scale linear defensive systems were constructed from June 1940 to early 1941, but documentary sources suggest that Welsh examples were constructed during the summer of 1940. It is unclear when this defensive line was abandoned.

The original design and strategic intention can be determined from the locations of the existing defences. Approaching from the S along the course of the A470 from Merthyr Tydfil, a NE-SW line of anti-tank blocks (Item 'F') was located to block the valley to the W of the trunk road. To the W of the alignment the ground was too steep to facilitate tank movements. An 'L' shaped slit trench (Item 'D') was located to the N of, and above, the anti-tank alignment, to provide a forward observation and sniper post. The anti-tank blocks were sited on the N bank of the river Blaen Taf Fawr to maximise their effectiveness.

A roadblock would have blocked access N along the road at Pont ar Daf, but no remains of this can now be seen. A commemorative plaque describes rebuilding works on the bridge during 1941. These works may have been to enable the bridge to be blocked. To the E of the roadblock, a shorter alignment of massive anti-tank blocks (Item 'E') prevented tanks from crossing the Blaen Taf Fawr. To the E of this alignment the ground was too steep to facilitate tank movements.

If the alignment of anti-tank blocks was breached, the invading force would reach a pillbox (Item 'C') c. 80m to the N. The embrasures at this pillbox face E and S, suggesting that the invading force would follow the course of the river. A second pillbox (Item 'B') with two S facing machine gun emplacements was located immediately to the N of a bend in the river above a fording point, c. 250m N of Item 'C'. The effectiveness of the pillbox was increased by the location of a flanking infantry support trench (Item 'A') c. 20m to the W.

The strategy of the defences from the anti-tank blocks northwards, was to drive the aggressor off the route of the road and NE into the increasingly narrow and steep valley of the Blaen Taf Fawr.

CADW Scheduled Ancient Monument Record
SAM Archaeological Item Description Text

SAM No: BR337(POW)

SAM Name: Storey Arms Anti-invasion Defences

Item No: BR337A

Item Name: Infantry Support Trench

Visit Date: 03/11/2005

Visited By: Berry J

Description Text:

Item 'A' consists of a red brick-built infantry support trench, also known as a section post, and is located at NGR SN 98827 19875. The trench was designed to accommodate a section of ten men and provided flanking support to the adjacent pillbox. The idea was to provide mutual fire support and enhance the effectiveness of the overall defensive scheme.

The structure is built into the top of a terrace immediately N of a bend in the river Blaen Taf Fawr and commands the river valley and a fording point to the S. It is aligned E-W. Overall its dimensions measure c. 13.1m E-W, 5m N-S and 1.1m tall when viewed externally from the S. It is a broad 'V' shape in plan and has eight sides. The infantry support trench has two entrances on the N side that lead into the interior, one at the E and one at the W. The trench contains 14 embrasures: 10 face S, 3 face SW and 1 faces SE.

Side A faces S and contains 10 embrasures, which are all unblocked. It measures 9.3m long externally. A grass covered earthen bank rises up to the bottom of the embrasures on this side.

Side B faces SW and contains 3 embrasures, which are all unblocked. It measures 3.9m long externally. A grass covered earthen bank rises up to the bottom of the embrasures on this side.

Side C faces NW and measures 2.2m long externally. This wall is partially hidden by a bank of earth.

Side D faces NE and measures 2.9m long externally. This wall contains the W sunken entrance into the internal compartment, which is unblocked. It is more elaborate than the E entrance, with a longer protective stone built retaining wall on the W side measuring a maximum of 1.3m tall. It is oriented SW-NE and measuring 1.1m long. The protective wall doglegs to the E by another 0.7m. The outer protective wall is 0.25m thick. The entrance has 3 widely spaced brick-built steps.

Side E faces N and measures 7m long externally. A grass covered earthen bank slopes down from the roofline of the structure. It spreads to a maximum horizontal width of 2.5m.

Side F faces NW and measures 0.8m long. This wall forms part of the entrance structure.

Side G faces NE and contains the E entrance, which is unblocked. The wall measures 2.1m long externally. The curvilinear sunken entrance consists of five brick built steps springing clockwise from the W doorjamb lead down into the inner compartment through an entrance c. 0.77m wide. There is a brick built retaining wall to the E, measuring 0.8m long.

Side H faces E and contains 1 embrasure, which is unblocked. The wall measures 2.1m long externally. The embrasure covers the course of the river valley to the E. A grass covered earthen bank rises up to the bottom of the embrasure on this side.

The interior is shaped like a broad 'V' with one arm longer than the other. The main axis is aligned NE-SW and measures c. 9m in length. The shorter axis is oriented NW-SE and measures 3m in length. The compartment measures a maximum of 1.35m in width and 1.85m from floor to ceiling. In section (N-S), the lower half of the trench consists of two non-parallel red brick built walls. At the bottom the width of the concrete floor measures 0.8m wide. The walls are c. 1m (11 courses) tall and diverge away from one another. At a height of 1m the walls are 1.05m apart. Beneath all the embrasures, there is a continuous

**CADW Scheduled Ancient Monument Record
SAM Archaeological Item Description Text**

SAM No: BR337(POW)

SAM Name: Storey Arms Anti-invasion Defences

brick built shelf measuring 0.27m wide to enable soldiers to steady their rifles when taking aim through the embrasures. On the N side, there is a slight horizontal lip measuring 0.03m wide before the brick wall (nine courses tall) continues vertically to meet the ceiling.

The internal aperture of each embrasure measures 0.78m wide, 0.25m tall and 0.5m thick. The embrasures are not pre-cast units. Rather, they consist of a concrete lintel with brick built sides and bottom, covered with a mortar skim.

A concrete slab roof covers the entire structure and measures c. 0.25m thick. It was poured onto a bed of corrugated steel, which survives beneath. The roof also retains the grass-covered earth camouflage above.

Item No: BR337B

Item Name: Pillbox

Visit Date: 03/11/2005

Visited By: Berry J

Description Text:

Item 'B' is a pillbox that is situated c. 20m E of the infantry support trench (Item 'A') at NGR SN 98853 19893. It is built into the steep S facing slope of a river terrace N of, and above, the river Blaen Taf Fawr. The pillbox is rectangular in shape and measures c. 8.4m N-S by 5.3m transversely. The visible part of the pillbox measures a maximum of 1.85m tall when viewed from the S. The pillbox is constructed from a combination of red brick and roughly dressed stone.

Externally, only the S and E faces are visible as the rest of the pillbox is embedded into the ground behind. The S wall measures 5.3m long externally and contains two low set embrasures, with a square hole set higher up in between. The W end is stone built and the E end is brick built. A grass covered earthen bank rises up to the bottom of the embrasures on this side.

The visible part of the E face measures 2.4m long from the S corner and contains one small and high set embrasure at the S end. In the upper stone courses of the wall are four ceramic pipes that pierce through the fabric of the wall. Their use is uncertain, but it is possible they provided a ventilation function.

The entrance lies to the N of the pillbox. It consists of four stone steps that descend into a low, narrow and straight stone built subterranean passage that leads S. The tunnel measures 5.1m long, 1.2m tall and 0.6m wide. It contains two steps down, the first at 3.7m and the last step at the end. The tunnel doglegs W down another step, before recommencing S with a final step down into the main compartment.

The entrance into the compartment measures 0.9m wide. The compartment measures c. 4.6m E-W by 2.3m transversely. It measures 1.85m tall from floor to ceiling.

Internally, the W half of the compartment is brick built, while the E half has a brick built lower section measuring c. 0.9m tall with a roughly dressed stone upper section. It is possible that this represents 2 phases of construction. The floor is made from concrete. The ceiling consists of corrugated steel sheets, which have begun to rust and peel away.

The S wall contains two low set embrasures. The bottom surface of each aperture measures 0.6m above the floor. The internal aperture of each embrasure measures 0.4m wide and 0.3m tall. The external aperture of each embrasure measures 1.56m wide and 0.3m tall. The embrasures are spaced 2.5m apart centre to centre. The wall measures 0.75m thick. The embrasures are not pre-cast units. Rather, they consist of a concrete lintel with brick built sides and bottom, covered with a mortar skim.

CADW Scheduled Ancient Monument Record
SAM Archaeological Item Description Text

SAM No: BR337(POW)

SAM Name: Storey Arms Anti-invasion Defences

Beneath each embrasure is a recess into the wall measuring 0.2m deep and 0.5m wide. It is possible that this feature was designed to incorporate the splayed legs of a tripod-mounted machine gun.

Between the two embrasures is a square hole 0.3m wide and 0.28m tall. It is located 0.4m above the gun embrasures. This feature may have functioned as an observation window to direct gun fire.

In the E facing wall, there is a rifle embrasure measuring 0.23m tall and 0.45m wide. The aperture narrows to a minimum of 0.25m wide. The bottom surface of the aperture measures 1.2m above the floor. The E wall measures 0.35m thick.

Item No: BR337C

Item Name: Pillbox

Visit Date: 03/11/2005

Visited By: Berry J

Description Text:

Item 'C' consists of a red brick built pillbox located in a belt of coniferous forestry on the E side of the A470 at NGR SN 98811 19632. Specifically, the pillbox is located immediately adjacent to the E side of the W boundary wall. The pillbox measures c. 4.4m E-W, 6m N-S and 1m tall when viewed externally. In shape the pillbox is broadly 'L' shaped.

The pillbox possesses two E facing and three S facing embrasures. The embrasures are not pre-cast units; rather, they consist of a concrete lintel with brick built sides and bottom, covered with a mortar skim. A set of four brick built steps lead down to a sunken entrance on the NE corner.

Wall 'A' faces S and measures 4.4m long externally. It contains three embrasures, which are all unblocked. A grass covered earthen bank rises up to the bottom of the embrasures.

Wall 'B' faces W and measures 3.5m long externally. Its external face is buried behind a grass covered earthen bank and only the top 0.5m of brick work is visible.

Wall 'C' faces N and measures 2.2m long externally. Its external face is buried behind a grass covered earthen bank.

Wall 'D' faces W and measures 1.2m long externally. The wall forms part of the entrance structure. Its external face is partially buried behind a grass covered earthen bank.

Wall 'E' faces N and measures 2.1m long externally. It contains the entrance to the pillbox, which comprises of four brick built steps descending into the interior, springing clockwise from the W door jamb. The steps are protected by a stone and brick retaining wall to the NE. It measures 0.6m wide and projects in a curvilinear fashion 1.3m from the N face. The entrance into the internal compartment of the pillbox measures 0.5m wide and 1.65m tall. There is a concrete lintel 1.9m long above the doorway.

Wall 'F' faces E and measures 4.4m long externally. It contains two embrasures, which are both unblocked. A grass covered earthen bank rises up almost to the bottom of the embrasures.

Internally, the pillbox is L-shaped. The long E-W axis measures 3.7m long. The N-S axis measures 1.4m at its narrowest and 2.8m at its widest. The pillbox measures 1.9m tall from floor to ceiling. The bottom surface of the embrasures are 1.25m above the floor. An elbow rest runs beneath the embrasures. It measures 1.1m tall and 0.28m deep. The walls

**CADW Scheduled Ancient Monument Record
SAM Archaeological Item Description Text**

SAM No: BR337(POW)	SAM Name: Storey Arms Anti-invasion Defences
---------------------------	---

measure c. 0.5m thick.

The brick roof retains its earth and grass camouflage covering on its upper surface and the corrugated sheet steel shuttering on its lower surface.

Item No: BR337D **Item Name:** Slit trench

Visit Date: 03/11/2005 **Visited By:** Berry J

Description Text: Item 'D' consists of an 'L'-shaped earthwork ditch and bank located on the E flank of Bryn Du to the W of the A470 at NGR SN 98686 19505.

The long axis of the earthwork is oriented N-S. It consists of a ditch measuring c. 6.6m long, 0.5m deep and c. 1.3m wide, part of which appears to be rock cut. There is a grass covered earth and stone bank measuring 0.3m tall along its entire E side. The bank has spread to a width of 1.5m. At the S terminus, the ditch continues W for a length of c. 4m. The ditch measures 1.3m in width and 0.5m deep. The bank curves W to follow the S side of the ditch.

The earthworks are sharply defined and appear to be modern in origin. Located above the road with a commanding view and behind the main defensive line of anti-tank blocks, the feature represents an advanced observation post and / or sniper position.

Item No: BR337E **Item Name:** Anti-tank blocks (E group)

Visit Date: 03/11/2005 **Visited By:** Berry J

Description Text: The E alignment of anti-tank blocks lies at the bottom of a river valley between the Pont ar Daf bridge carrying the old route of the A470 to the W and a river terrace at the base of Tyle Brith to the E. It measures 27m long and consists of 8 concrete blocks arranged corner to corner at c. 3.3m intervals. The alignment is oriented E-W.

The construction of the blocks is unusual and differs from the anti-tank blocks W of the A470, as each block is constructed purely from concrete, with no local facing stones incorporated into the fabric. Each block measures 1.5m (5ft) wide by 1.5m (5ft) deep. The height of the blocks varies, but examples at the S end of this group are very unusual as they measure up to 2.5m (8ft) tall. Each block bears the characteristic imprint marks of vertically aligned corrugated steel sheet shuttering used while the concrete set. The tops of each block have been finished with stones set on their ends into concrete, possibly for camouflage purposes. Each block retains its original location, spacing and orientation.

The blocks follow the S bank of the river Blaen Taff Fawr. The northernmost block is at NGR SN 98827 19544 and is the final block in the entire alignment as it abuts a steep river cliff. The southernmost block in the E group is at SN 98800 19533 where it is immediately adjacent to the SE corner of Pont ar Daf bridge, which carried the old route of the A470 (as it would have been during WWII) until it was improved. The bridge bears an inscription recording works undertaken to it in 1941, which may be connected to the anti-invasion construction works. Unfortunately, the bridge appears to have been re-surfaced and no trace of any road block features has survived.

Item No: BR337F **Item Name:** Anti-tank blocks (W group)

CADW Scheduled Ancient Monument Record
SAM Archaeological Item Description Text

SAM No: BR337(POW)

SAM Name: Storey Arms Anti-invasion Defences

Visit Date: 03/11/2005

Visited By: Berry J

Description Text:

The W group of anti-tank blocks consists of approximately 60 examples running in a curvilinear alignment along the W bank of the gently meandering river Blaen Taf Fawr over a distance of c. 200m. The northernmost block is at NGR SN 98766 19534. The southernmost block is at SN 98698 19345. The northernmost 14 blocks are aligned ENE-WSW. The blocks then turn to a N-S alignment. They are oriented corner to corner at approximately c. 3.1m intervals.

Each block is built from concrete with local stone facing and measures c. 1.6m tall, wide and deep. The top of each block features stones set vertically on their ends in a bed of concrete.

The northernmost block of the W group is half buried in the elevated earthen embankment of the new A470 and it is possible that the alignment survives intact beneath this built up area to the W side of Pont ar Daf.

CADW: Welsh Historic Monument
Photographic Record Form

SAM No: BR337F

SAM Name: STOREY ARMS ANTI-INVASION DEFENCES

Unitary Authority(UA):

POWYS

Community:

GLYN TARELL

Date: 03/11/05

Photographer: J BERRY

Neg No: JAB/2005/14



ABOVE: RIVER COURSE CUTTING W ACROSS ALIGNMENT (FROM S)
BELOW: COMPLETE ALIGNMENT FROM S



CADW: Welsh Historic Monument
Photographic Record Form

SAM No: BR337F	SAM Name: STOREY ARMS ANTI-INVASION DEFENCES	
Unitary Authority(UA): POWYS	Community: GLYN TARELL	
Date: 03/11/05	Photographer: J BERRY	Neg No: JAB/2005/14



ABOVE: TWO UNDERCUT + DISPLACED BLOCKS IN N SECTION
BELOW: ALIGNMENT CUTTING ACROSS RIVER WHERE COURSE HAS CHANGED





ABOVE: ALIGNMENT FROM W

CADW: Welsh Historic Monument
Photographic Record Form

SAM No: BR337 E	SAM Name: STOREY ARMS ANTI-INVASION DEFENCES	
Unitary Authority(UA): POWYS	Community: GLYN TARELL	
Date: 03/11/05	Photographer: BERRY J	Neg No: JAB/2005/14



ABOVE: ANTI-TANK BLOCKS FROM N (POUT AR DAF ON RIGHT)
BELOW: ALIGNMENT FROM NE



CADW: Welsh Historic Monument
Photographic Record Form

SAM No: BR337 D

SAM Name: STOREY ARMS ANTI-INVASION DEFENCES

Unitary Authority(UA):

POWYS

Community:

GLYN TARELL

Date: 03/11/05

Photographer: BERRY J

Neg No: SAB/2005/14



ABOVE: SLIT TRENCH FROM SW
BELOW: SHEEP SCRAPE AT N END



CADW: Welsh Historic Monument
Photographic Record Form

SAM No: BR337 D	SAM Name: STOREY ARMS ANTI-INVASION DEFENCES	
Unitary Authority(UA): POWYS	Community: GLYN TARELL	
Date: 03/11/05	Photographer: BERRY J	Neg No: SAB/2005/14



ABOVE: LOCATION OF SLIT TRENCH
BELOW: SLIT TRENCH FROM S



CADW: Welsh Historic Monument
Photographic Record Form

SAM No: BR337C	SAM Name: STOREY ARMS ANTI-INVASION DEFENCES	
Unitary Authority(UA): POWYS	Community: GLYN TARELL	
Date: 03/4/05	Photographer: BERRY J	Neg No: JAB/2005/14



LEFT: SE CORNER FROM W
BELOW: ENTRANCE STEPS



CADW: Welsh Historic Monument
Photographic Record Form

SAM No: BR 337 C	SAM Name: STOREY ARMS ANTI-INVASION DEFENCES	
Unitary Authority(UA): POWYS	Community: GLYN TARELL	
Date: 03/11/05	Photographer: BERRY J	Neg No: SAB/2005/14



ABOVE: W END FROM E

CADW: Welsh Historic Monument
Photographic Record Form

SAM No: BR337 C

SAM Name: STOREY ARMS ANTI-INVASION DEFENCES

Unitary Authority(UA):
POWYS

Community:
GLYN TARELL

Date: 03/11/05

Photographer: BERRY J

Neg No: JAB/2005/14



ABOVE: PILLBOX FROM W
BELOW: ENTRANCE FROM NW



CADW: Welsh Historic Monument
Photographic Record Form

SAM No: BR337C	SAM Name: STORGY ARMS ANTI-INVASION DEFENCES	
Unitary Authority(UA): POWYS	Community: GLYN TARELL	
Date: 03/11/05	Photographer: BERRY J	Neg No: SAB/2005/14



ABOVE : S FACE FROM SE
BELOW: E FACE FROM NE



CADW: Welsh Historic Monument
Photographic Record Form

SAM No: BR337 B	SAM Name: STOREY ARMS ANTI-INVASION DEFENCES	
Unitary Authority(UA): POWYS	Community: GLYN TARELL	
Date: 03/11/05	Photographer: BERRY J	Neg No: JAB/2005/14



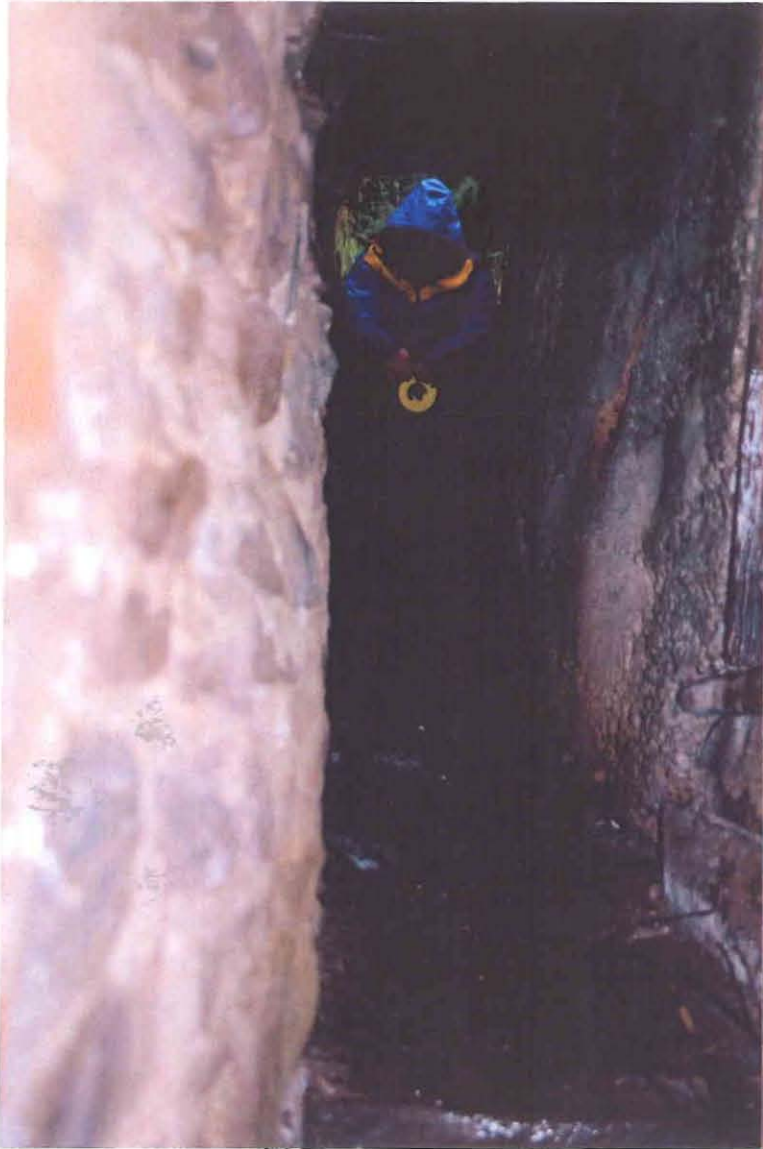
ABOVE: VIEW S THROUGH EMBRASURE

BELOW: E EMBRASURE IN S WALL. NOTE RECESS BELOW



CADW: Welsh Historic Monument
Photographic Record Form

SAM No: BR337 B	SAM Name: STOREY ARMS ANTI-INVASION DEFENCES	
Unitary Authority(UA): POWYS	Community: GLYN TARELL	
Date: 03/11/05	Photographer: BERRY J	Neg No: SAB/2005/14



LEFT: ENTRANCE PASSAGE FROM S

BELOW: PASSAGE ENTRANCE INTO COMPARTMENT.



CADW: Welsh Historic Monument
Photographic Record Form

SAM No: BR337A	SAM Name: STOREY ARMS ANTI-INVASION DEFENCES	
Unitary Authority(UA): POWYS	Community: GLYN TARELL	
Date: 03/11/05	Photographer: BERRY J	Neg No: JAB/2005/14



LEFT: W ENTRANCE FROM INSIDE
BELOW: INTERIOR FROM E



CADW: Welsh Historic Monument
Photographic Record Form

SAM No: BR337A	SAM Name: STOREY ARMS ANTI-INVASION DEFENCES	
Unitary Authority(UA): POWYS	Community: GLYN TARELL	
Date: 03/11/05	Photographer: BERRY J	Neg No: SAB/2005/14



ABOVE: INTERIOR FROM E END

BELOW: CRACK AT S END OF W WALL



CADW: Welsh Historic Monument
Photographic Record Form

SAM No: BR337B	SAM Name: STOREY ARMS ANTI-INVASION DEFENCES	
Unitary Authority(UA): POWYS	Community: GLYN TARELL	
Date: 03/11/05	Photographer: BERRY J	Neg No: SAB/2005/14



ABOVE: PILLBOX FROM INFANTRY SUPPORT TRENCH (ITEM A)
BELOW: PILLBOX FROM S (NB. 2 x EMBRASURES + OBSERVATION WINDOW)



CADW: Welsh Historic Monument
Photographic Record Form

SAM No: BR337A	SAM Name: STOREY ARMS ANTI-INVASION DEFENCES	
Unitary Authority(UA): POWYS	Community: GLYN TAPELL	
Date: 03/11/05	Photographer: BERRY J	Neg No: SAB/2005/14



ABOVE: W ENTRANCE FROM N

CADW: Welsh Historic Monument
Photographic Record Form

SAM No: BR337 B	SAM Name: STOREY ARMS ANTI-INVASION DEFENCES	
Unitary Authority(UA): POWYS	Community: GLYN TARELL	
Date: 03/11/2005	Photographer: BERRY J	Neg No: JAB/2005/14



ABOVE: E FACE (NB. 1x EMBRASURE + 4x VENTILATION PIPES)
BELOW: PEELING + RUSTING CORRUGATED STEEL ROOF SHUTTERING



CADW: Welsh Historic Monument
Photographic Record Form

SAM No: BR337 B	SAM Name: STOREY ARMS ANTI-INVASION DEFENCES	
Unitary Authority(UA): POWYS	Community: GLYN TARELL	
Date: 03/11/05	Photographer: BERRY J	Neg No: SAB/2005/14



ABOVE: ENTRANCE TO SUBTERRANEAN PASSAGE FROM N

CADW: Welsh Historic Monument
Photographic Record Form

SAM No: BR337A	SAM Name: STOREY ARMS ANTI - INVASION DEFENCE	
Unitary Authority(UA): POWYS	Community: GLYN TARELL	
Date: 03/11/05	Photographer: BERRY J	Neg No: SAB/2005/14



ABOVE: INFANTRY SUPPORT TRENCH FROM W
BELOW: FROM SW



CADW: Welsh Historic Monument
Photographic Record Form

SAM No: BR337A

SAM Name: STOREY ARMS ANTI-INVASION DEFENCES

Unitary Authority(UA):
POWYS

Community:
GLYN TARELL

Date: 03/11/05

Photographer: BERRY J

Neg No: JAB/2005/14

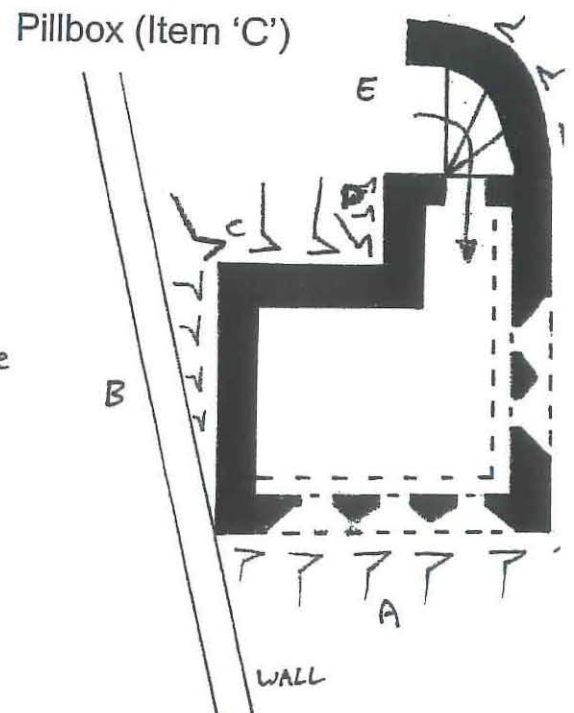
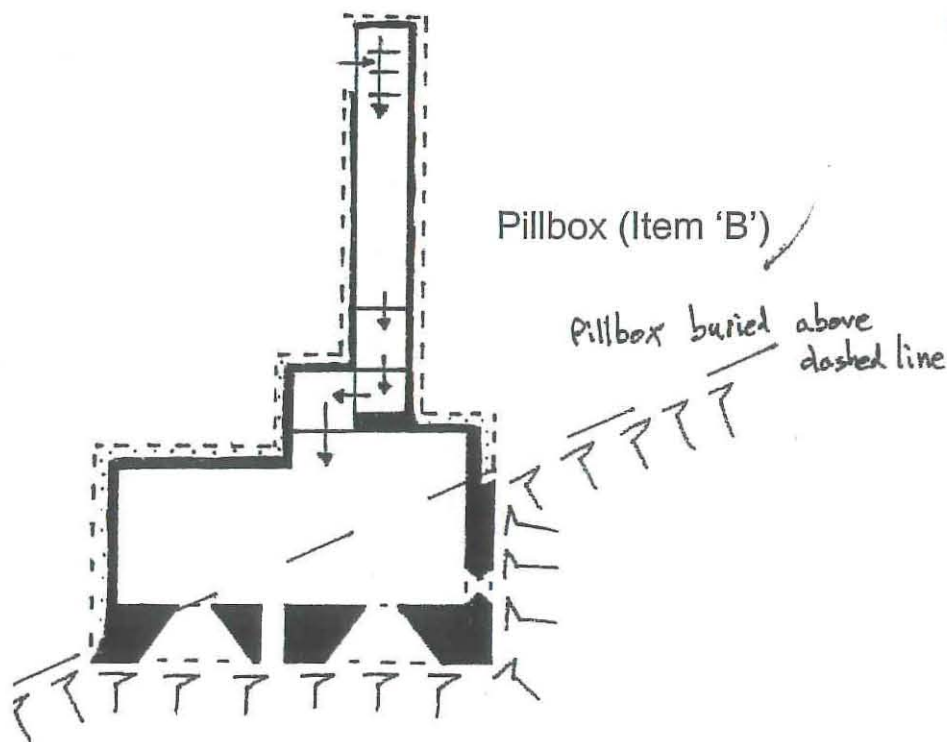
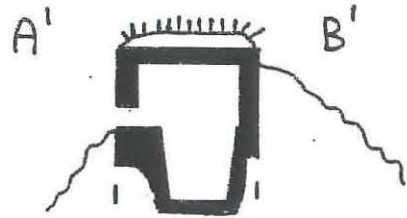
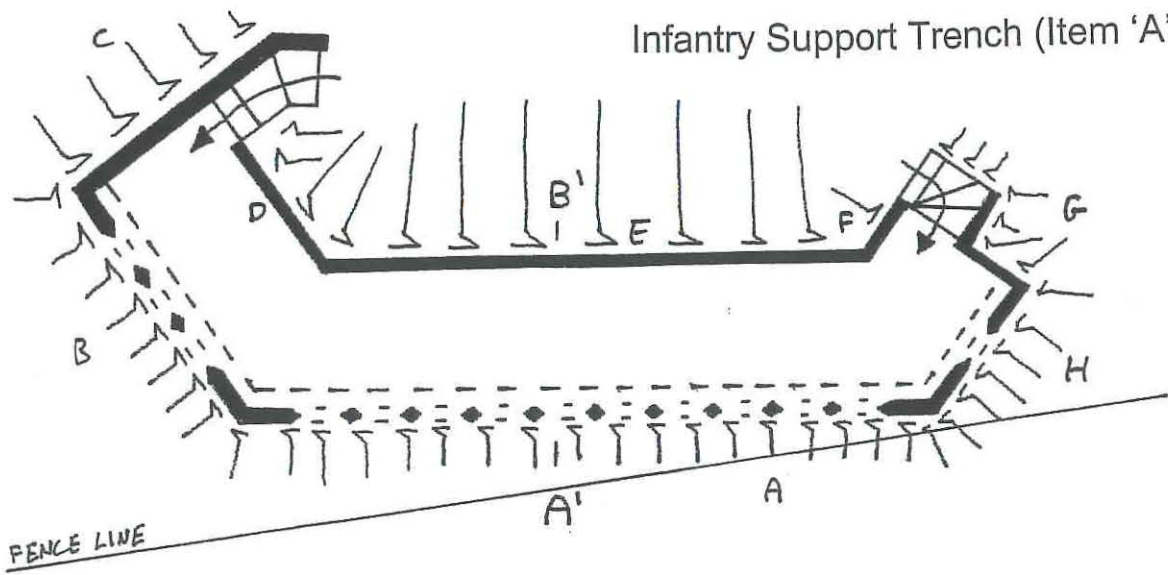


ABOVE: E END (EMBASURES OBSCURED BY GRASS)
BELOW: E ENTRANCE



BR337 Storey Arms Anti-invasion Defences

Infantry Support Trench (Item 'A')



CPAT Regional Historic Environment Record

PRN 2283 - Pont ar Daf Blockhouse

NGR :- SN98461988 (SN91NE)

Unitary authority :- Powys

Community :- Glyn Tarell

Preferred site type :- 20th century - Blockhouse ? (Structure - Damaged)

OVAL MOUND SOME 9.1M E-W BY 7.3M N-S BY 1.5M HIGH AND APPARENTLY COMPOSED OF EARTH BOULDERS AND MORTARED BRICKS. PROB MODERN WARTIME (1939-45) BLOCKHOUSE.

Sources:-

CPAT visit form , 1981 , ,

CPAT archive , 1982 , ,

RCAHM archive , , MS NOTE BREC INV

record created 31/12/1981 CM81 - copyright CPAT , last updated 28/01/2003

The above data are supplied by CPAT in partnership with its Local Authorities and the partners of END, © CPAT SMR partnership, 2005 (and in part © Crown, 2005 - as indicated)

CM - 15/04/2005 (13:30:13) - HTML file produced from CPAT's Regional HER

*Clwyd Powys Archaeological Trust, Curatorial Section, 7a Church Street, Welshpool, Powys SY21 7DL.
tel (01938) 553670 , fax (01938) 552179, email trust@cpat.org.uk , website www.cpat.org.uk*

Jeff Spencer

16 November 2006 10:50:05

To:	jonathan.berry@wales.gsi.gov.uk
Subject:	SAM BR337 Storey Arms Anti-Invasion Defences
From:	Jeff Spencer <jeff@cpat.org.uk>
Date:	16 November 2006 10:48:46

Dear Jonathan,
further to our earlier telephone conversation please find attached below the entry for a possible additional defensive position at Storey Arms from the Clwyd-Powys HER.

I'd be very grateful if you could let me know your thoughts about it in due course.

With best wishes,

Cheers

Jeff

--

Jeff Spencer

Swyddog y Cofnod yr Amgylchedd Hanesyddol
Ymddiriedolaeth Archaeolegol Clwyd-Powys
7a Stryd yr Eglwys
Y Trallwng
SY21 7DL

Ffôn (01938 553670)
Ebost jeff@cpat.org.uk

Mae rhagor o wybodaeth am CPAT ac ein gwaith yng nghanolbarth a gogledd-dwyrain Cymru, ar gael ar ein gwefan - www.cpat.org.uk

Historic Environment Record Officer
Clwyd-Powys Archaeological Trust
7a Church St
Welshpool
SY21 7DL

Tel. (01938) 553670
email jeff@cpat.org.uk

For further information about CPAT and our work in mid- and north-east Wales, visit our website at www.cpat.org.uk

Attachment added before posting!

