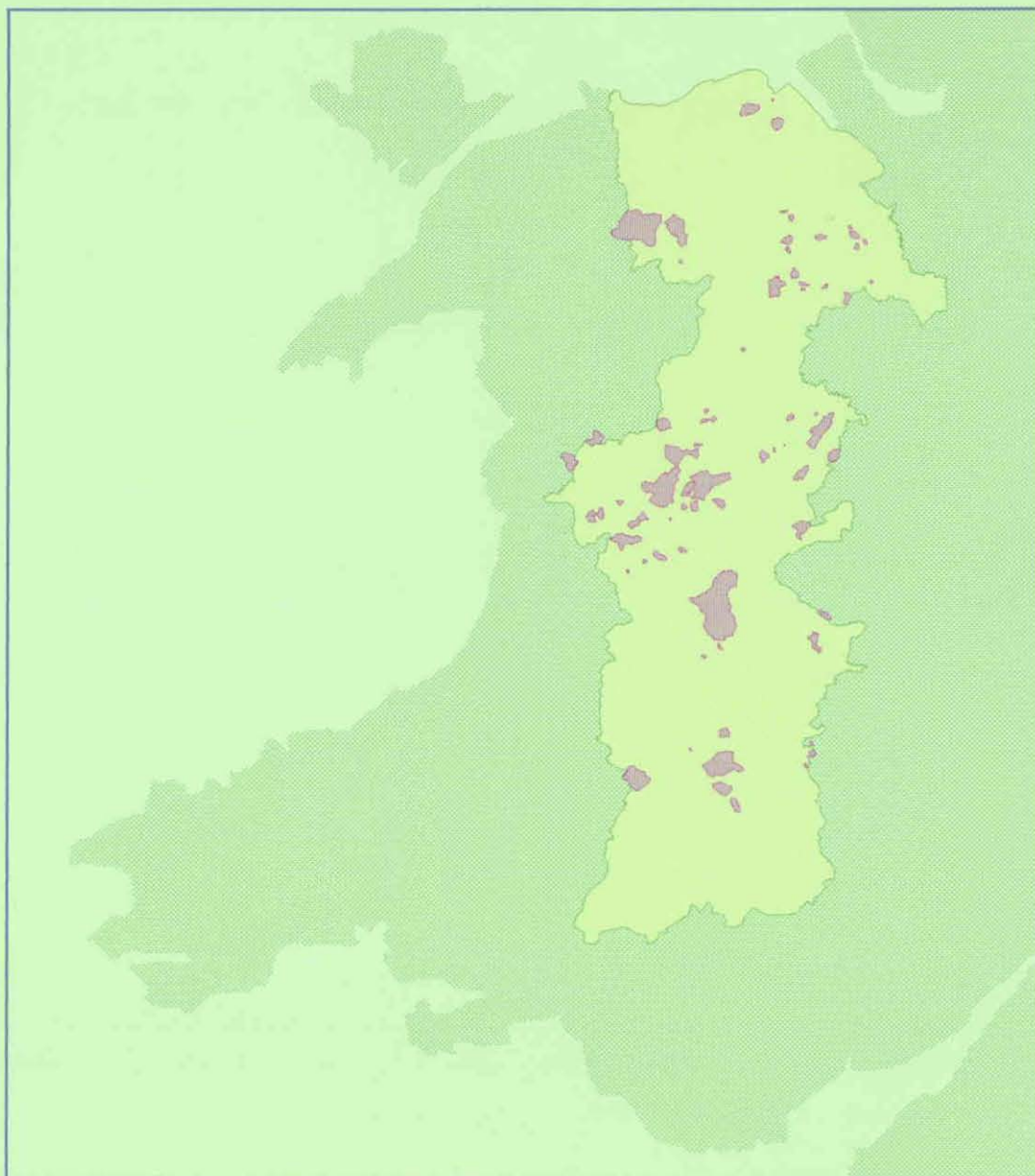


THE CLWYD-POWYS ARCHAEOLOGICAL TRUST

Boundary Mapping Project



CPAT REPORT No 222

THE CLWYD-POWYS ARCHAEOLOGICAL TRUST

Boundary Mapping Project

CPAT REPORT No 222

CPAT Report No 222

Boundary Mapping Project

David Thomas

March 1997

Report prepared for Cadw: Welsh Historic Monuments

The Clwyd-Powys Archaeological Trust

7a Church Street, Welshpool, Powys, SY21 7DL

tel (01938) 553670, fax (01938) 552179

© CPAT 1997

1 INTRODUCTION

This report provides a summary of work by the Clwyd-Powys Archaeological Trust (CPAT) on a number of historically significant boundaries, carried out towards the end of the 1996/97 financial year with the help of contingency funding from Cadw: Welsh Historic Monuments.

The project was undertaken in response to the consultation draft of the *Hedgerow Regulations* under section 97 of the Environment Act 1995, which it was anticipated would be laid before Parliament early in 1997. The consultation draft set out a number of criteria to be used for local planning authorities in determining which hedgerows are important, the criteria relating to the value of hedgerows from an archaeological, historical, landscape and wildlife perspectives. The draft *Regulations* set out various criteria by which historically-important hedges were to be defined, restricting it to those listed certain named repositories at the date at which the regulations were to come into force. In Wales this was primarily limited to the SMRs maintained by the Welsh Archaeological Trusts and County Record Offices.

In view of the limited time and resources available for completion of the project the information was restricted to three main sources: a series of important unpublished maps of 1587 of the Tretower and Crickhowell manors held by the National Library of Wales, maps of Cistercian lands in Clwyd and Powys published in David Williams's *Atlas of Cistercian Lands in Wales*, and lastly parish and township boundaries shown on the *Index to the Tithe Survey* overprinted on the first edition of the 1-inch Ordnance Survey.

The boundaries recorded on these sources are now held in digital format in the Regional SMR, data relating to Powys having already been made available to Powys County Council to assist in their implementation of the *Hedgerow Regulations*.

The project has been valuable providing an index to some of the historically significant boundaries, particularly in Powys, some of which may survive as 'important hedgerows' as defined by the *Hedgerow Regulations*.

It is hoped that there will be the opportunity to undertake further work on this subject in the near future and to extend it to the local authority areas in the former county of Clwyd.

2 SOURCES, METHODOLOGY AND RESULTS

2.1 Pre-1600 estate boundaries: Beaufort Estate

Copies of a series of 45 maps dating to 1587 of the Beaufort Estates' Tretower and Crickhowell manors (National Library of Wales, Badminton Vol 59) was used to identify pre-1600 estate boundaries. These are the only maps in Powys from this period which show boundaries in sufficient detail to relate them to modern mapped features. The boundaries were related to the modern digital map base by rectification through AutoCAD 12, then by comparison with features shown on modern maps. Where there was difficulty in identifying features on the 1587 map, reference was made to a series of eighteenth-century maps of the Beaufort Estate (NLW, Badminton Vol 13).

Of the 45 individual maps included in the Beaufort Estate maps, the location of 30 was identified. With further documentary research it may be possible to identify the location of some of the unlocated maps, but most are small and a number show only a single isolated field. The maps also show a large number of other features, including houses, mills, and bridges which have not yet been captured by the SMR. Together with references to land-use in the accompanying schedules they provide a very valuable source of information relating to early settlement and land-use in the area.

Overall the correlation between boundary features mapped in 1587 and features of the modern map was very good. The largest map relates to the area immediately around Tretower and here almost all the boundaries shown on the modern map are shown on the 1587 plan. As the project was carried out as an entirely desk-based project it is not known how the boundaries are manifested on the ground. The boundaries may not all be hedges; some, particularly those in upland areas, may be stone walls.

A copy of the MapInfo format digital map of the Beaufort Estate maps has been passed to Powys County Council for use in development control relating to the *Hedgerow Regulations*.

The results of mapping are shown in figures 1-6.

The location of the individual maps in the Badminton collection are listed in the **Appendix** with a central grid reference where appropriate.

2.2 Pre-1600 estate boundaries: Cistercian lands in Clwyd and Powys

The map of Cistercian lands outlined in David Williams's *Atlas of Cistercian Lands in Wales* (University of Wales Press, 1990) was used in an attempt to identify the location of boundaries relating to the medieval monastic estates.

The *Atlas* maps the boundaries against a modern OS map base. All the monastic boundaries in Clwyd and Powys given in Williams's *Atlas of Cistercian Lands in Wales* were in AutoCAD 12 and the resulting drawings transferred into MapInfo. Given the small scale of the published maps the digital map should be treated with an element of caution. However, it should prove useful for identifying hedges within the Cistercian holdings which fall within the scope of the *Hedgerow Regulations*.

A copy of the MapInfo format digital map of the boundaries shown in *the Atlas of Cistercian Lands in Wales* has been passed to Powys County Council for use in development control relating to the *Hedgerows Regulations*.

The results of the mapping are shown in figure 7.

2.3 Parish and township boundaries: Powys

There is no definitive mapping of parish and township boundaries in Wales, but the tithe maps of the 1830s and 1840s provide a reasonably complete if not always wholly accurate source. Within the limited time and resources available to the project it was realistic to attempt to digitise all the parish and township boundaries shown on the tithe maps. As an alternative, the Ordnance Survey 1-inch first edition overlain with the parish and published as an *Index to the Tithe Survey* was used.

In order to locate these early OS maps against a modern map base and digitise them, a grid based on the map frame was created. Rectification was achieved by identifying features on the edges of each early map which were the same as those shown on a modern map. These known points were transferred to a modern digital map base and were 'joined-up' to produce a regular grid, representing the junctions between each OS sheet. This grid was then used to derive NGRs for the each corner of the OS sheets which could in turn be used as reference points to digitise the boundaries shown on each map and rectify them to the national grid. The digitisation of the parish and township boundaries was carried out in AutoCAD 12, and the drawing produced were then transferred into MapInfo.

Parish and township boundaries were digitised for the whole of Powys with the exception of the south-east corner of the county, for which no map was available from the National Library of Wales at the time of the project. It is hoped that, resources permitting, this gap will be remedied at some future date. In a few areas the overprinted boundaries on the OS 1-inch sheets were poorly edge-matched and some township boundaries simply disappeared when they crossed into an adjoining map sheet. This was particularly acute in the north-west corner of the county (map sheet 74SW), in an area where many townships are not defined on the tithe maps. Elsewhere the edge matching appears to be quite good and key boundaries appear to correlate well with modern mapping of a similar scale.

A copy of the MapInfo format digital map of parish and township boundaries has been passed to Powys County Council for use in development control relating to the *Hedgerows Regulations*

The results of the mapping are shown in figure 8.

APPENDIX: INDEX AND LAYOUT OF MAPS IN BADMINTON COLLECTION

One or more maps appear on the folios in the collection. For the sake of reference the following listing, with grid references where known, attempts to show the relative positions of the individual maps in the folios used during this study. There are four folios given at the end where the number is missing from copies supplied by the National Library of Wales, and in these instances an approximate location rather than a folio number is given.

Folio 42

[a] SO22142030

[b] SO23261881

Folio 48

[a] Unlocated

[c] SO21861820

[e] SO20291843

[b] SO23961609

[d] SO25381863

Folio 71

[a] Unlocated (but approx SO196215)

[b] SO16252196

[c] Unlocated

[d] Unlocated

Folio 72

[a] Unlocated

[c] SO18652381

[b] SO19882674

[d] Unlocated

[e] SO17552383

Folio 73

[a] Unlocated

[e] Unlocated

[b] Unlocated

[f] Unlocated

[h] SO17612055

[c] Unlocated

[g] SO19312014

[d] Unlocated

Folio 81

SO 15961998

Folio 82

[a] SO15451947 [c] Unlocated

[e] SO14751834

[g] SO15021818

[b] SO09741530 [d] SO15101978

[f] Unlocated

[h] Unlocated

Folio 83

[a] SO15401783

[c] SO10891686

[b] SO15861914

Folio 84

[a] SO12691810

[b] SO14141713

Folio 85

[a] SO13921874

[b] SO 13391850

Folio [number unknown - Llangattock Park]
SO21511717

Folio [number unknown - Coed-yr-ynys]
SO15032015

Folio [number unknown - areas to East and West of Crickhowell]
[a] SO21011891 [b] SO22621771

Folio [number unknown - Tretower]
SO18412114

Boundary Mapping Project

Figure 1

1:25000

1587 Beaufort Estate Map

National Library of Wales
Badminton Volume 59

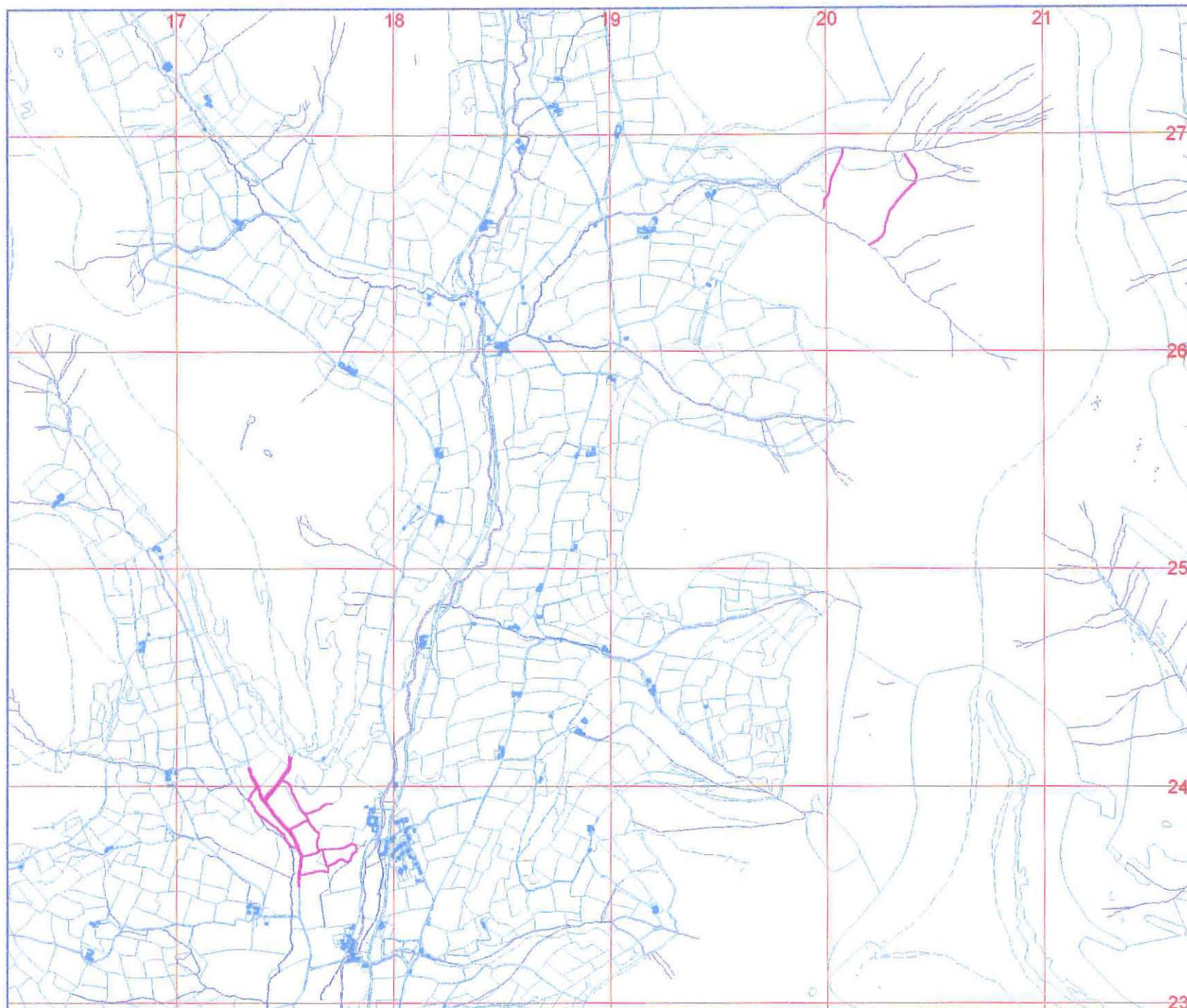
— Ordnance Survey Digital
Map Data, 1995

— Present day boundaries
likely to correspond to
features mapped in 1587

CPAT Sites and Monuments Record
7a Church Street, Welshpool, Powys

Based on the Ordnance Survey
mapping with the permission of
the controller of Her Majesty's
Stationary Office.
Crown Copyright.

Unauthorised reproduction infringes
Crown Copyright and may lead to
prosecution or civil proceedings.
Powys County Council Licence
number LA09016L, 1997



Boundary Mapping Project

Figure 2

1:25000

1587 Beaufort Estate Map

National Library of Wales
Badminton Volume 59

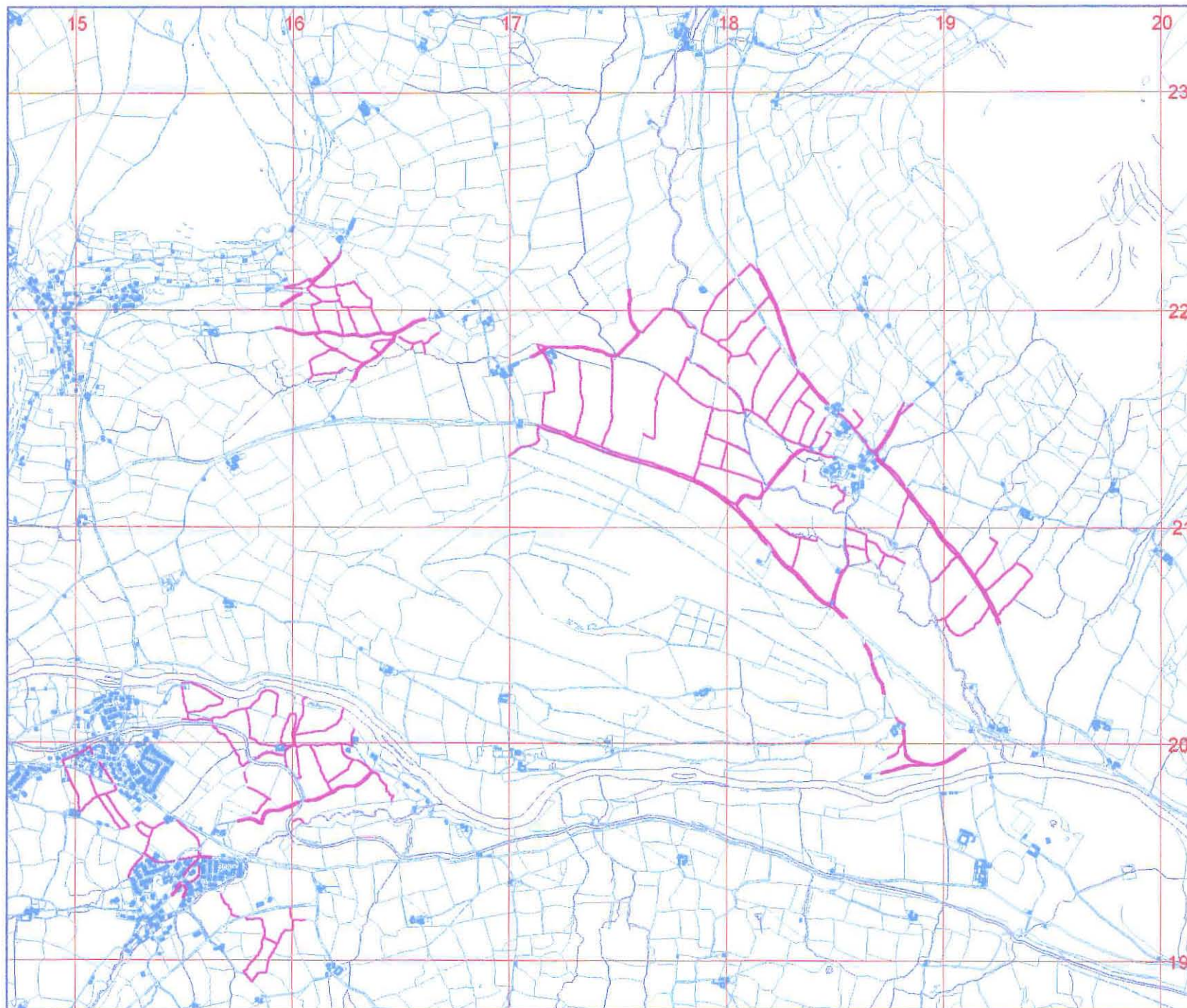
— Ordnance Survey Digital
Map Data, 1995

— Present day boundaries
likely to correspond to
features mapped in 1587

CPAT Sites and Monuments Record
7a Church Street, Welshpool, Powys

Based on the Ordnance Survey
mapping with the permission of
the controller of Her Majesty's
Stationary Office.
Crown Copyright.

Unauthorised reproduction infringes
Crown Copyright and may lead to
prosecution or civil proceedings.
Powys County Council Licence
number LA09016L, 1997



Boundary Mapping Project

Figure 3

1:25000

1587 Beaufort Estate Map

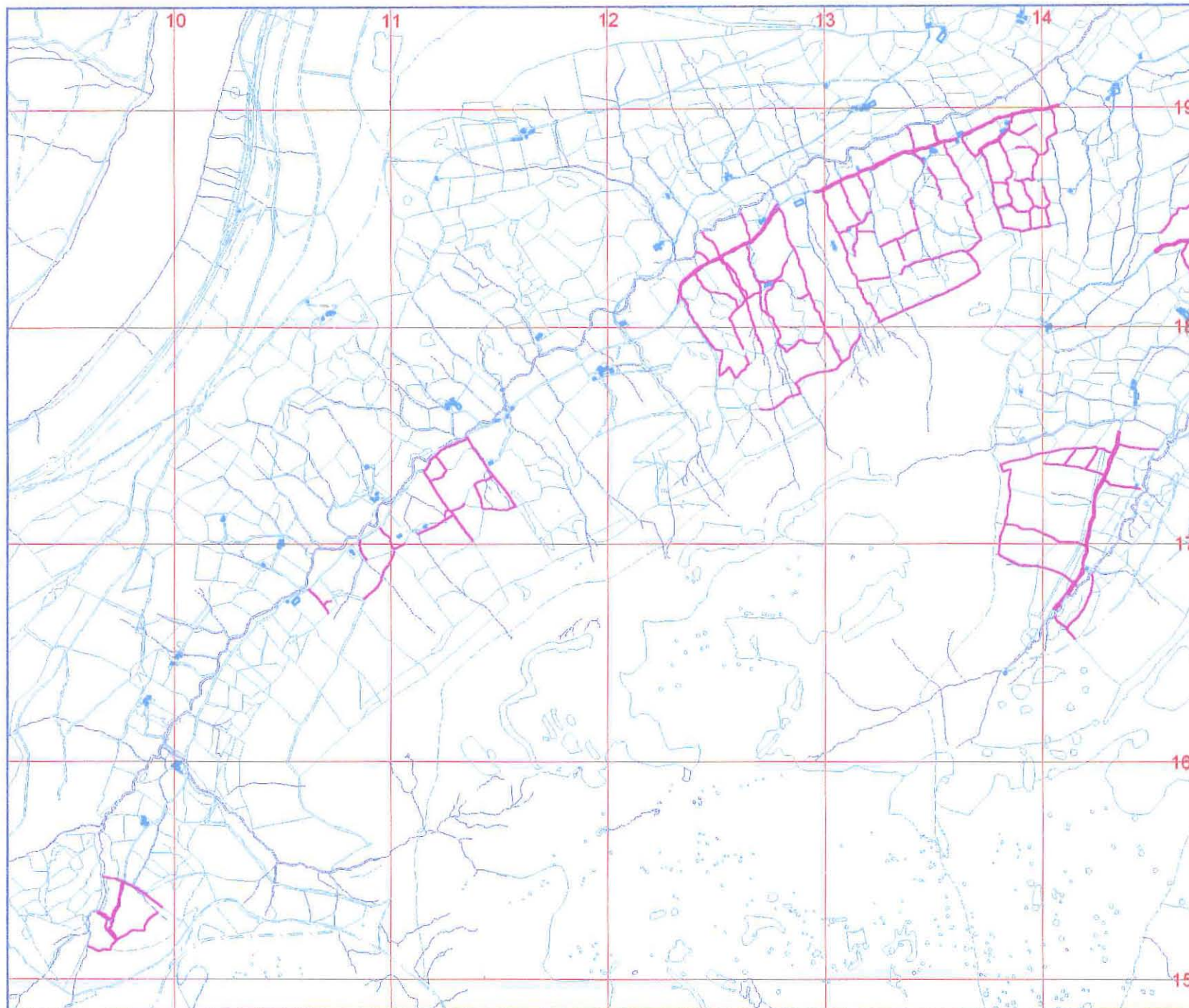
National Library of Wales
Badminton Volume 59

— Ordnance Survey Digital
Map Data, 1995

— Present day boundaries
likely to correspond to
features mapped in 1587

CPAT Sites and Monuments Record
7a Church Street, Welshpool, Powys

Based on the Ordnance Survey
mapping with the permission of
the controller of Her Majesty's
Stationary Office.
Crown Copyright.
Unauthorised reproduction infringes
Crown Copyright and may lead to
prosecution or civil proceedings.
Powys County Council Licence
number LA09016L, 1997



Boundary Mapping Project

Figure 4

1:25000

1587 Beaufort Estate Map

National Library of Wales
Badminton Volume 59

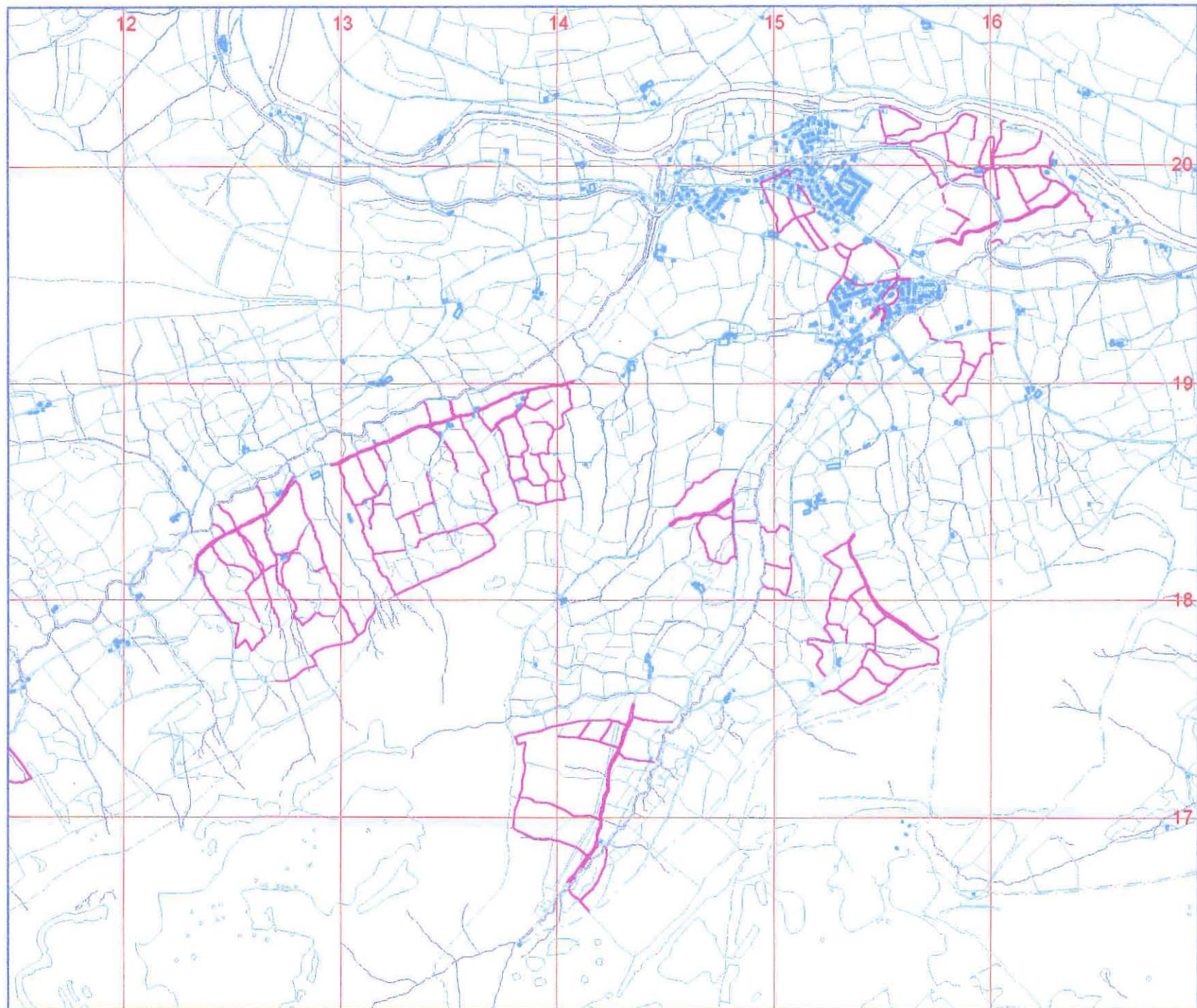
— Ordnance Survey Digital
Map Data, 1995

— Present day boundaries
likely to correspond to
features mapped in 1587

CPAT Sites and Monuments Record
7a Church Street, Welshpool, Powys

Based on the Ordnance Survey
mapping with the permission of
the controller of Her Majesty's
Stationary Office.
Crown Copyright.

Unauthorised reproduction infringes
Crown Copyright and may lead to
prosecution or civil proceedings.
Powys County Council Licence
number LA09016L, 1997



Boundary Mapping Project

Figure 5

1:25000

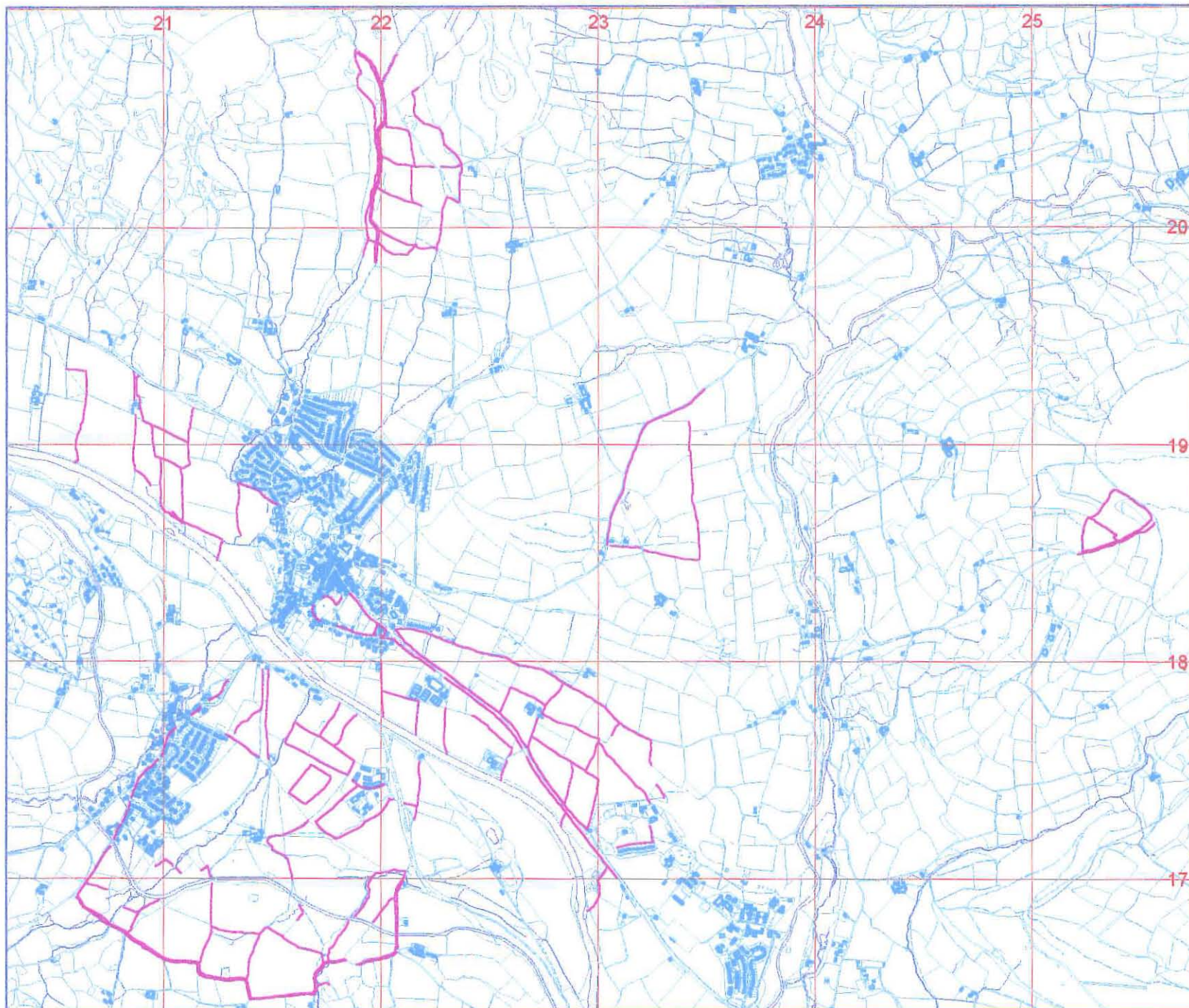
1587 Beaufort Estate Map

National Library of Wales
Badminton Volume 59

- Ordnance Survey Digital Map Data, 1995
- Present day boundaries likely to correspond to features mapped in 1587

CPAT Sites and Monuments Record
7a Church Street, Welshpool, Powys

Based on the Ordnance Survey mapping with the permission of the controller of Her Majesty's Stationary Office.
Crown Copyright.
Unauthorised reproduction infringes Crown Copyright and may lead to prosecution or civil proceedings.
Powys County Council Licence number LA09016L, 1997



Boundary Mapping Project

Figure 6

1:25000

1587 Beaufort Estate Map

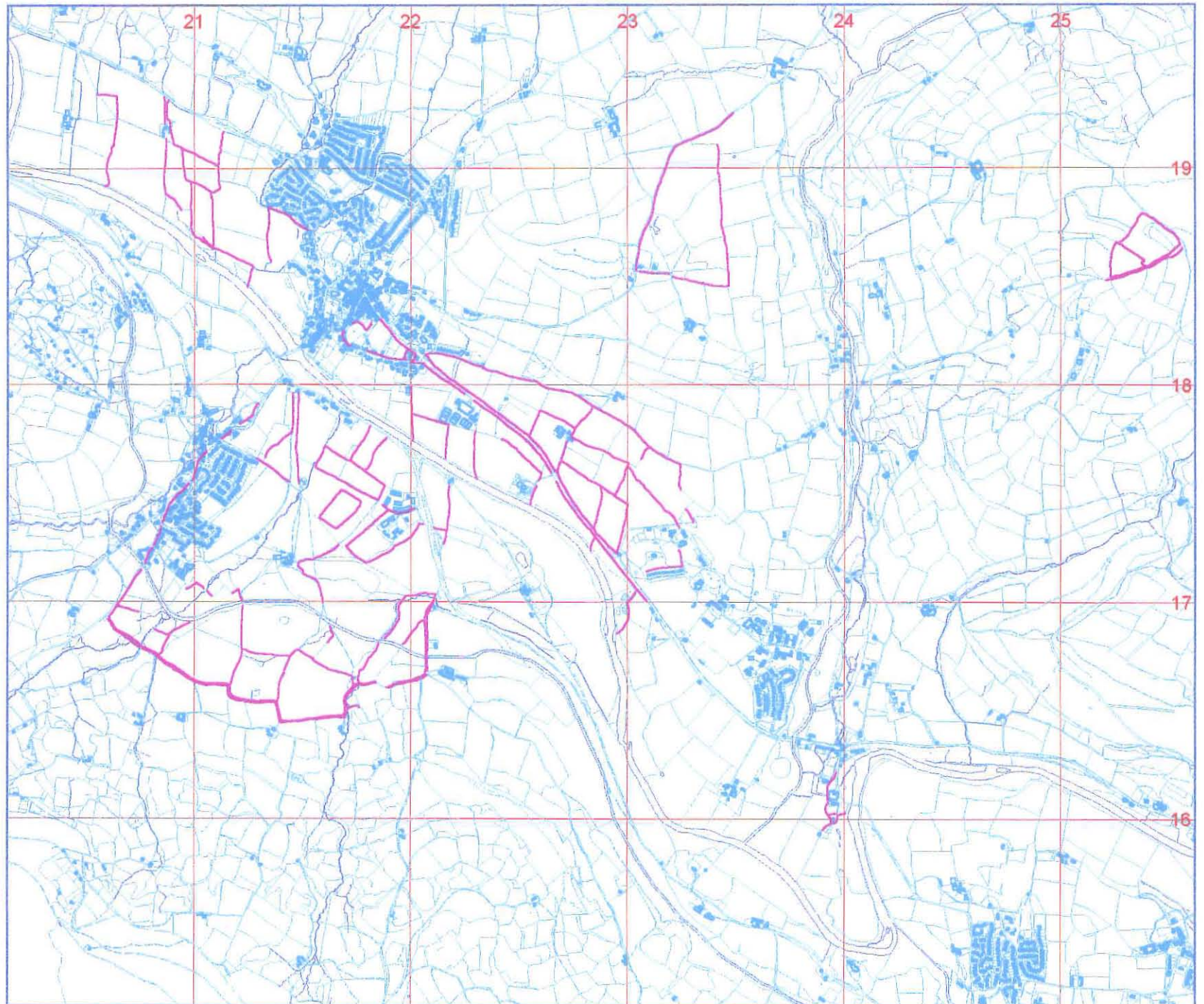
National Library of Wales
Badminton Volume 59

— Ordnance Survey Digital
Map Data, 1995

— Present day boundaries
likely to correspond to
features mapped in 1587

CPAT Sites and Monuments Record
7a Church Street, Welshpool, Powys

Based on the Ordnance Survey
mapping with the permission of
the controller of Her Majesty's
Stationary Office.
Crown Copyright.
Unauthorised reproduction infringes
Crown Copyright and may lead to
prosecution or civil proceedings.
Powys County Council Licence
number LA09016L, 1997



Cistercian Lands in Clwyd and Powys (Based on Williams, 1990).
Not to Scale



Outlines of Township Boundaries in Powys
Not to Scale

