

THE CLWYD POWYS ARCHAEOLOGICAL TRUST

# ***Brecknockshire LANDMAP Historic Landscape Aspect Evaluation***

Technical Report



CPAT Report No 1003

CPAT Report No 1003

# ***Brecknockshire LANDMAP Historic Landscape Aspect Evaluation***

Technical Report

**C H R Martin & A E McCullough**  
March 2009

Report for the Countryside Council for Wales

**The Clwyd Powys Archaeological Trust**  
7a Church Street, Welshpool, Powys, SY21 7DL  
tel (01938) 553670, fax (01938) 552179  
email [chrismartin@cpat.org.uk](mailto:chrismartin@cpat.org.uk)  
web [www.cpat.org.uk](http://www.cpat.org.uk)

## **EXECUTIVE SUMMARY**

The LANDMAP Historic Landscape aspect of the study area identified 151 separate aspect areas, ranging in size from 0.2 to 107 square kilometres and representing 10 different landscape patterns. These 151 areas were examined and each was evaluated against five pre-set criteria – *Integrity, Survival, Condition, Rarity and Potential* - and given one of five scores – *Unassessed, Low, Moderate, High or Outstanding*. Each set of resulting scores were then amalgamated and a overall evaluation score for each area obtained. The distribution of these scores are as follows,

|                    |                 |
|--------------------|-----------------|
| <b>Outstanding</b> | <b>30 (20%)</b> |
| <b>High</b>        | <b>46 (30%)</b> |
| <b>Moderate</b>    | <b>44 (29%)</b> |
| <b>Low</b>         | <b>31 (21%)</b> |
| <b>Unassessed</b>  | <b>0</b>        |

## **CONTENTS**

|   |   |    |
|---|---|----|
| 1 | INTRODUCTION  | 1  |
| 2 | METHODOLOGY   | 4  |
| 3 | OVERALL EVALUATION OF HISTORIC LANDSCAPE ASPECT AREAS | 11 |
| 4 | REFERENCES  | 15 |

## 1. INTRODUCTION

The Brecknockshire *LANDMAP* forms part of an ongoing pan-Wales project of landscape assessment. The area studied extends over the whole of Brecknockshire and covers approximately 1780 square kilometres of mid Wales. The Historic Landscape Aspect work was undertaken by The Clwyd-Powys Archaeological Trust (CPAT) on behalf Powys County Council and the Countryside Council for Wales (CCW) in 2003. This original study was carried out in accordance with the 2003 LANDMAP methodology which did not require the evaluation of aspect areas defined at Level 3 areas. In order to bring the Historic Landscape Aspect into line with other LANDMAP aspects, new guidance allowing for evaluation at Level 3 was produced in 2008, and in 2009 CCW issued a series of contracts to evaluate these previously defined areas. The evaluation exercise for the Brecknockshire LANDMAP Historic Landscape Aspect was carried out between October 2008 and March 2009 by CPAT.

## 2. METHODOLOGY

### Overview

This is an assessment of the intrinsic value of Aspect Area defined in the Brecknockshire LANDMAP. The Historic Landscape Aspect criteria for the identification of this intrinsic quality have been adapted from those used to evaluate the impacts of development on historic landscapes found in the *Guide to Good Practice on Using The Register of Landscapes of Historic Interest in Wales in the Planning and Development Process* (known as AISIDOHL2 as of 2007) These are *Integrity, Survival, Condition, Rarity and Potential*.

Using the guidance, each aspect area was assessed against the five criteria and allocated one of four 'scores' – *Low, Moderate, High, Outstanding*. For each assessment criterion, scores of 1-4 were allocated, with 1 corresponding to Low and 4 to Outstanding, as follows:

| Score | Evaluation  |
|-------|-------------|
| 4     | Outstanding |
| 3     | High        |
| 2     | Moderate    |
| 1     | Low         |

No area was scored as *Unassessed*.

A total score was then obtained by adding the scores for each criteria and an Overall Evaluation allocated according to the following table.

| Total Score | Overall Evaluation |
|-------------|--------------------|
| 17-20       | Outstanding        |
| 13-16       | High               |
| 9-12        | Moderate           |
| 5-8         | Low                |

The Evaluation scores were recorded in the Evaluation Matrix section of the LANDMAP Collector database.

### Data collection analysis and recording

Digital mapped sources that were used were the Ordnance Survey (OS) 1:10,000, 1:50,000 and 1:25,000 raster maps, OS Landline and contour data and latterly OS Mastermap data for the whole of the study area. Digitally geo-referenced vertical aerial photography (AP) of Brecknockshire supplied by GetMapping and that produced by COWI supplied by CCW, and used under their licence, were also used as a mapping source and in addition to this occasional reference was made to editions of early OS mapping. The GetMapping and COWI AP data, and oblique aerial photography also proved useful for identifying (relatively) current land use, vegetation types and land cover as well as helping to identify the nature of many boundary features and therefore for assessing integrity, condition and survival

The primary source of historical and archaeological information was the Historic Environment Record (HER), maintained by CPAT. Much of the information in these records is point data, but it also includes some polygonal data derived from a number of paper-based sources. These documentary and manuscript sources that were consulted included lists of listed buildings, the register of historic parks and gardens, and the historic landscapes registers together with the historic landscape characterization reports for *The Elan Valley, The Middle Wye, The Middle Usk and East Fforest Fawr and Mynydd-y-Glog*.

Where possible the assembled data were examined and analysed digitally using MapInfo Professional 7.8 GIS software. Initial assessments of each aspect area against the five evaluation criteria were made using the GIS. A very limited programme of field visiting was undertaken to check decisions taken in the desk-based assessment, but heavy reliance was also placed on detailed field data collected as part of the various Cadw pan-Wales assessment projects undertaken by CPAT over the past 10-15 years.

A database was created in version 5.0.16, 5.0.17 and 5.0.18 of the XML based LANDMAP Collector software supplied by CCW. Associated texts were prepared in Word 2000, and submitted as both hard copy and Adobe Acrobat (version 9.0) PDF files.

### 3. OVERALL EVALUATION OF HISTORIC LANDSCAPE ASPECT AREAS

The following table summarizes the overall evaluations awarded to Historic Landscape Aspect Areas, in line with the LANDMAP 2008 guidance. The derivations of these overall scores can be found for each area in the Collector database.

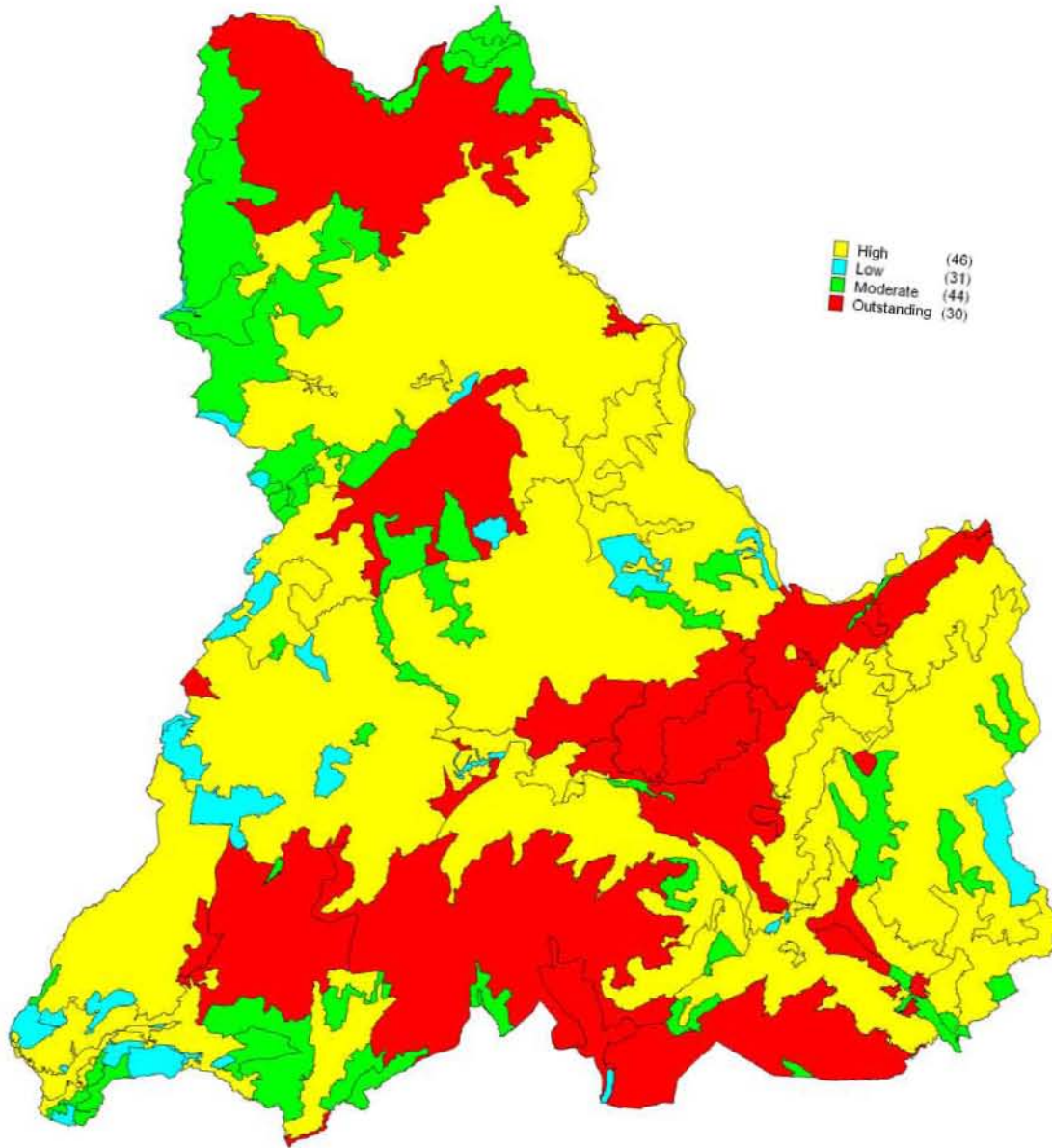
| OVERALL EVALUATION | LANDSCAPE PATTERN     | AREA NAME                 | AREA UID   |
|--------------------|-----------------------|---------------------------|------------|
| Outstanding        | Irregular Fieldscapes | Glyntawe                  | BRCKNHL623 |
| Outstanding        | Irregular Fieldscapes | Porthamal                 | BRCKNHL687 |
| Outstanding        | Regular Fieldscapes   | Castell Dinas             | BRCKNHL285 |
| Outstanding        | Regular Fieldscapes   | Llanddew                  | BRCKNHL694 |
| Outstanding        | Regular Fieldscapes   | Llanhamlach               | BRCKNHL857 |
| Outstanding        | Regular Fieldscapes   | Llechfaen                 | BRCKNHL692 |
| Outstanding        | Regular Fieldscapes   | Pen-y-crug                | BRCKNHL541 |
| Outstanding        | Regular Fieldscapes   | Penygaer                  | BRCKNHL385 |
| Outstanding        | Other fieldscapes     | Sennybridge Training Area | BRCKNHL204 |
| Outstanding        | Woodland              | Taf Fechan                | BRCKNHL864 |
| Outstanding        | Marginal Land         | Bannau Brycheiniog        | BRCKNHL829 |
| Outstanding        | Marginal Land         | Carnau                    | BRCKNHL316 |
| Outstanding        | Marginal Land         | Cnewr                     | BRCKNHL825 |
| Outstanding        | Marginal Land         | Mynydd Bach Trecastell    | BRCKNHL778 |
| Outstanding        | Marginal Land         | Mynydd Illtud             | BRCKNHL970 |
| Outstanding        | Marginal Land         | Mynydd Llangynidr         | BRCKNHL133 |
| Outstanding        | Water & Wetland       | Caban-coch Reservoir      | BRCKNHL400 |
| Outstanding        | Water & Wetland       | Llangorse Lake            | BRCKNHL377 |
| Outstanding        | Nucleated Settlement  | Brecon                    | BRCKNHL121 |
| Outstanding        | Nucleated Settlement  | Bronllys                  | BRCKNHL383 |
| Outstanding        | Nucleated Settlement  | Builth Wells              | BRCKNHL849 |
| Outstanding        | Nucleated Settlement  | Crickhowell               | BRCKNHL707 |
| Outstanding        | Nucleated Settlement  | Hay                       | BRCKNHL846 |
| Outstanding        | Other Settlement      | Ffawyddog                 | BRCKNHL389 |
| Outstanding        | Other Settlement      | Pontneddfechan            | BRCKNHL830 |
| Outstanding        | Designed              | Craig-y-Nos               | BRCKNHL433 |
| Outstanding        | Designed              | Glanusk Park / Gliffaes   | BRCKNHL484 |
| Outstanding        | Designed              | Llangattock Park          | BRCKNHL956 |
| Outstanding        | Designed              | Old Gwernyfed             | BRCKNHL913 |
| Outstanding        | Designed              | Penpont                   | BRCKNHL517 |



| OVERALL EVALUATION | LANDSCAPE PATTERN     | AREA NAME                | AREA UID   |
|--------------------|-----------------------|--------------------------|------------|
| High               | Irregular Fieldscapes | Abergwesyn               | BRCKNHL147 |
| High               | Irregular Fieldscapes | Crickadarn               | BRCKNHL004 |
| High               | Irregular Fieldscapes | Cwmcrawnon               | BRCKNHL636 |
| High               | Irregular Fieldscapes | Dyffryn Irfon            | BRCKNHL847 |
| High               | Irregular Fieldscapes | Dyffryn Tawe             | BRCKNHL735 |
| High               | Irregular Fieldscapes | Libanus                  | BRCKNHL525 |
| High               | Irregular Fieldscapes | Maestorglwydd            | BRCKNHL485 |
| High               | Irregular Fieldscapes | Rhos Fawr                | BRCKNHL669 |
| High               | Irregular Fieldscapes | Trecastell               | BRCKNHL260 |
| High               | Irregular Fieldscapes | Upper Chapel             | BRCKNHL431 |
| High               | Irregular Fieldscapes | Ystradfellte             | BRCKNHL798 |
| High               | Regular Fieldscapes   | Aberbran                 | BRCKNHL453 |
| High               | Regular Fieldscapes   | Belfountain              | BRCKNHL329 |
| High               | Regular Fieldscapes   | Cathedine                | BRCKNHL172 |
| High               | Regular Fieldscapes   | Cwm-gu                   | BRCKNHL890 |
| High               | Regular Fieldscapes   | Gilestone                | BRCKNHL492 |
| High               | Regular Fieldscapes   | Great Porthmael          | BRCKNHL269 |
| High               | Regular Fieldscapes   | Llangoed                 | BRCKNHL742 |
| High               | Regular Fieldscapes   | Llanspyddid              | BRCKNHL951 |
| High               | Regular Fieldscapes   | Llwynfynwent             | BRCKNHL600 |
| High               | Regular Fieldscapes   | Pipton                   | BRCKNHL966 |
| High               | Regular Fieldscapes   | Trefecca                 | BRCKNHL611 |
| High               | Regular Fieldscapes   | Vale of Grwyney          | BRCKNHL176 |
| High               | Regular Fieldscapes   | Ystrad                   | BRCKNHL005 |
| High               | Other fieldscapes     | Cae Garw                 | BRCKNHL107 |
| High               | Other fieldscapes     | Mynydd Bwlch-y-Groes     | BRCKNHL158 |
| High               | Other fieldscapes     | Pentre Dolau Honddu      | BRCKNHL335 |
| High               | Woodland              | Blaen Llia               | BRCKNHL953 |
| High               | Woodland              | Talybont Reservoir       | BRCKNHL270 |
| High               | Marginal Land         | Black Mountains          | BRCKNHL642 |
| High               | Marginal Land         | Mynydd Du                | BRCKNHL595 |
| High               | Marginal Land         | Mynydd Llangorse         | BRCKNHL567 |
| High               | Marginal Land         | Pant y Llyn              | BRCKNHL323 |
| High               | Water & Wetland       | Claerwen Reservoir       | BRCKNHL494 |
| High               | Nucleated Settlement  |                          | BRCKNHL597 |
| High               | Nucleated Settlement  | Bwlch                    | BRCKNHL298 |
| High               | Nucleated Settlement  | Llangorse                | BRCKNHL701 |
| High               | Nucleated Settlement  | Llangynidr               | BRCKNHL183 |
| High               | Nucleated Settlement  | Talgarth                 | BRCKNHL848 |
| High               | Other Settlement      | Llangammarch Wells       | BRCKNHL520 |
| High               | Other Settlement      | Ystradgynlais / Abercraf | BRCKNHL124 |
| High               | Extractive            | Hendre-ladis             | BRCKNHL248 |
| High               | Extractive            | Pen-wyllt                | BRCKNHL766 |
| High               | Designed              | Bronllys Hospital        | BRCKNHL821 |
| High               | Designed              | Buckland                 | BRCKNHL835 |
| High               | Designed              | Ffrwdgrech               | BRCKNHL903 |

| OVERALL EVALUATION | LANDSCAPE PATTERN    | AREA NAME                 | AREA UID   |
|--------------------|----------------------|---------------------------|------------|
| Moderate           | Irregular Fieldsapes | Dyffryn Twrch             | BRCKNHL540 |
| Moderate           | Irregular Fieldsapes | Llanerch Cawr             | BRCKNHL151 |
| Moderate           | Irregular Fieldsapes | Llanwrthwl                | BRCKNHL782 |
| Moderate           | Irregular Fieldsapes | Vale of Ewyas             | BRCKNHL990 |
| Moderate           | Regular Fieldsapes   | Brynych                   | BRCKNHL266 |
| Moderate           | Regular Fieldsapes   | Carnau Gwynion            | BRCKNHL641 |
| Moderate           | Regular Fieldsapes   | Dyffryn Hepste            | BRCKNHL170 |
| Moderate           | Regular Fieldsapes   | Dyffryn Rhingoll          | BRCKNHL929 |
| Moderate           | Regular Fieldsapes   | Farteg                    | BRCKNHL002 |
| Moderate           | Regular Fieldsapes   | Gilfach                   | BRCKNHL387 |
| Moderate           | Regular Fieldsapes   | Spite Inn Farm            | BRCKNHL274 |
| Moderate           | Regular Fieldsapes   | Tirabad                   | BRCKNHL565 |
| Moderate           | Other fieldsapes     | Beili-Richard             | BRCKNHL001 |
| Moderate           | Other fieldsapes     | Cwm Egnant                | BRCKNHL787 |
| Moderate           | Other fieldsapes     | Gledgrydd                 | BRCKNHL300 |
| Moderate           | Other fieldsapes     | Sennybridge Training Area | BRCKNHL841 |
| Moderate           | Woodland             | Coed Taf Fawr             | BRCKNHL670 |
| Moderate           | Woodland             | Coed y Rhaiadr            | BRCKNHL461 |
| Moderate           | Woodland             | Coity                     | BRCKNHL501 |
| Moderate           | Woodland             | Cwm Carneilw              | BRCKNHL549 |
| Moderate           | Woodland             | Dyffryn Crawnon           | BRCKNHL708 |
| Moderate           | Woodland             | Fforest Crychan           | BRCKNHL451 |
| Moderate           | Woodland             | Fforest Irfon             | BRCKNHL007 |
| Moderate           | Woodland             | Gwaun Hepste              | BRCKNHL271 |
| Moderate           | Woodland             | Ty Commins                | BRCKNHL272 |
| Moderate           | Woodland             | Tywi Forest               | BRCKNHL969 |
| Moderate           | Marginal Land        | Carn Gafallt              | BRCKNHL006 |
| Moderate           | Marginal Land        | Carreg y Fran             | BRCKNHL868 |
| Moderate           | Marginal Land        | Cefn Bola-maen            | BRCKNHL925 |
| Moderate           | Marginal Land        | Cefngwaunhynog            | BRCKNHL202 |
| Moderate           | Marginal Land        | Llandyfalle Hill          | BRCKNHL887 |
| Moderate           | Marginal Land        | Mynydd Fforest            | BRCKNHL142 |
| Moderate           | Marginal Land        | Mynydd Pen-y-fai          | BRCKNHL426 |
| Moderate           | Marginal Land        | Mynydd Trawsnar           | BRCKNHL640 |
| Moderate           | Marginal Land        | Tor y Foel                | BRCKNHL404 |
| Moderate           | Marginal Land        | Twyn Disgwlf              | BRCKNHL278 |
| Moderate           | Marginal Land        | Twyn Eithinog             | BRCKNHL008 |
| Moderate           | Water & Wetland      | Cantref Reservoir         | BRCKNHL118 |
| Moderate           | Water & Wetland      | Cray Reservoir            | BRCKNHL253 |
| Moderate           | Nucleated Settlement | Llangatock                | BRCKNHL658 |
| Moderate           | Nucleated Settlement | Sennybidge                | BRCKNHL495 |
| Moderate           | Nucleated Settlement | Talybont-on-Usk           | BRCKNHL654 |
| Moderate           | Other Settlement     | Glangrwyney               | BRCKNHL256 |
| Moderate           | Other Settlement     | Three Cocks/Aberllynfi    | BRCKNHL514 |

| OVERALL EVALUATION | LANDSCAPE PATTERN     | AREA NAME                 | AREA UID   |
|--------------------|-----------------------|---------------------------|------------|
| Low                | Irregular Fieldscapes | Abercrave Farm            | BRCKNHL105 |
| Low                | Irregular Fieldscapes | Coedcae                   | BRCKNHL928 |
| Low                | Regular Fieldscapes   | Graigyrwyddon             | BRCKNHL445 |
| Low                | Other fieldscapes     | Abererbwll                | BRCKNHL957 |
| Low                | Other fieldscapes     | Blaen-Yscir-fawr          | BRCKNHL671 |
| Low                | Woodland              | Allt Aber-bran-fawr       | BRCKNHL886 |
| Low                | Woodland              | Fforest Crychan           | BRCKNHL467 |
| Low                | Woodland              | Gierdd Forest             | BRCKNHL852 |
| Low                | Woodland              | Glasfynydd Forest         | BRCKNHL727 |
| Low                | Woodland              | Glasfynydd Forest (part)  | BRCKNHL605 |
| Low                | Woodland              | Halfway Forest            | BRCKNHL446 |
| Low                | Woodland              | Halfway Forest (part)     | BRCKNHL784 |
| Low                | Woodland              | Llaneglwys / Ysgwydd Hwch | BRCKNHL840 |
| Low                | Woodland              | Mynydd Du Forest          | BRCKNHL393 |
| Low                | Woodland              | Mynydd Marchywel          | BRCKNHL397 |
| Low                | Woodland              | Nant Bryn                 | BRCKNHL314 |
| Low                | Woodland              | Nant Pen-rhos             | BRCKNHL761 |
| Low                | Woodland              | Stockley Wood             | BRCKNHL288 |
| Low                | Woodland              | Tir y Gof                 | BRCKNHL132 |
| Low                | Marginal Land         | Bryn Nicol                | BRCKNHL813 |
| Low                | Marginal Land         | Brynhet                   | BRCKNHL959 |
| Low                | Marginal Land         | Craig-lwyd-fawr           | BRCKNHL946 |
| Low                | Marginal Land         | Fforest Fach              | BRCKNHL126 |
| Low                | Marginal Land         | Pennau                    | BRCKNHL003 |
| Low                | Water & Wetland       | Llyn Brianne              | BRCKNHL125 |
| Low                | Water & Wetland       | Usk Reservoir             | BRCKNHL576 |
| Low                | Other Settlement      | Coelbren                  | BRCKNHL604 |
| Low                | Extractive            | Abercriban Quarry         | BRCKNHL750 |
| Low                | Extractive            | Bryn-henllys              | BRCKNHL753 |
| Low                | Extractive            | Coronation Park           | BRCKNHL622 |
| Low                | Extractive            | Onllwyn                   | BRCKNHL826 |



**Historic Landscape Aspect Areas evaluation scores for Brecknockshire LANDMAP**

#### 4. REFERENCES

- Armitage, E.S.**, 1912. *The Early Norman Castles of the British Isles*, London.
- Banks, W.**, 1862. 'Bronllys Castle', *Archaeologia Cambrensis*, 81-92.
- Bartley, D.D.**, 1960a. 'Rhosgoch Common, Radnorshire: stratigraphy and pollen analysis', *New Phytologist* 59, 238-62.
- Bartley, D.D.**, 1960b. 'Ecological studies on Rhosgoch Common, Radnorshire', *Journal of Ecology* 48, 205-14.
- Baughan, P.E.**, 1980. *North and Mid Wales: A Regional History of the Railways of Great Britain vol. II*, Nairn.
- Beresford, M.**, 1988. *New Towns of the Middle Ages*, 2nd edn, Gloucester.
- Bevan, J.M.S. & Sothern, E.**, 1991. *Brecknock Inventory of Ancient Woodland (Provisional)*, Nature Conservancy Council.
- Bowen, E.**, 2000. *Traditional Industries of Rural Wales: Self Sufficiency to Dependency in the County of Brecon*, Cardiff.
- Bowen, I.**, 1914. *The Great Enclosures of Common Lands in Wales*.
- Brecon Beacons National Park** 2000. *Brecon Beacons National Park Management Plan 2000-2005*.
- Briggs, C.S.**, 1986. 'Druid's circles in Wales', *Landscape History* 8, 5-13.
- Briggs, C.S.**, 1991a. 'Garden archaeology in Wales', in A.E. Brown (ed.), *Garden Archaeology*, 138-59, Council for British Archaeology Research Report 78.
- Briggs, C.S.**, 1991b. 'Welsh gardens under threat: an archaeological perspective', *Journal of Garden History* 11, 199-206.
- British Geological Survey/NERC** 1994. *The Rocks of Wales: Geological Map of Wales*, 1:250,000.
- Britnell, W.J.** 1992. *Penywrlodd Long Cairn, Talgarth, Powys*, CPAT Report 19.
- Britnell, W.J. & Savory, H.N.**, 1984. *Gwernvale and Penywrlodd: Two Neolithic Long Cairns in the Black Mountains of Brecknock*, Cambrian Archaeological Association.
- Burl, A.**, 2000. *The Stone Circles of Britain, Ireland and Brittany*, Yale University Press.
- Burnham, H.**, 1995. *A Guide to Ancient and Historic Wales: Clwyd and Powys*, London, HMSO.
- Butler, L.A.S.**, 1971. 'The study of deserted medieval settlements in Wales', in M. Beresford & J.G. Hurst (eds), *Deserted Medieval Villages*, 249-69, Guildford.
- Cadw** 1998. *Register of Landscapes of Outstanding Historic Interest in Wales*, CCW/Cadw/ICOMOS UK.
- Cadw** 1999. *Register of Landscapes, Parks and Gardens of Special Historic Interest in Wales. Part 1: Parks and Gardens: Powys*, Cadw, ICOMOS UK.
- Cadw** 2001. *Register of Landscapes of Special Historic Interest in Wales*, CCW/Cadw/ICOMOS UK.
- Cadw** 2006, *Database of Listed Buildings*.
- Cain, R.**, 1976. 'Llyswen', *Archaeology in Wales* 16, 17.
- Caroe, W.D.**, 1924. 'Llanfilo Church', *Archaeologia Cambrensis* 24, 291-8.
- Cary, J.**, 1806. *Traveller's Companion, or a Delineation of the Turnpike Roads of England and Wales*, London.
- Caseldine, A.**, 1990. *Environmental Archaeology in Wales*, St David's University College, Lampeter.
- CCW** 1995. *Traditional Orchards/Perllannau Traddodiadol*, Countryside Council for Wales.

- CCW 1996. Ponds and Conservation/Pyllau a Chadwraeth, Countryside Council for Wales.
- CCW 2008. The LANDMAP Information System/System Wybodaeth LANDMAP, Countryside Council for Wales.
- Chambers, F.M.**, 1985. 'Flandrian environmental history of the Llynfi catchment, South Wales', *Ecol. Mediterr.* 11, 73-80.
- Chapman, J.**, 1992. *A Guide to Parliamentary Enclosures in Wales*, University of Wales Press, Cardiff.
- Charles, B.G.**, 1938. *Non-Celtic Place-Names in Wales*, London Medieval Studies Monograph 1.
- Clark, J.**, 1794. *General View of the Agriculture of Radnor*, Board of Agriculture, London.
- Clark, J.**, 1794. *General View of the Agriculture of Brecknock*, Board of Agriculture, London.
- Clark, K.**, 1991. *Book of Hay*.
- Clew, K.R.**, 1982. *Hay-on-Wye, Llanigon and Capel-y-ffin: A Brief Guide*.
- Clinker, C.R.**, 1960a. *The Hay Railway*, Dawlish.
- Clinker, C.R.**, 1960b. 'Brecon railway crossroads', *Modern Transport*, September 1960.
- Colyer, R.J.**, 1976. *The Welsh Cattle Drovers: Agriculture and the Welsh Cattle Trade before and during the Nineteenth Century*, Cardiff.
- Coplestone-Crow, B.**, 1992-93. 'Trewalkin and its Anglo-Norman Lords', *Brycheiniog* 26, 43-51.
- Corcoran, J.X.W.P.**, 1969. 'The Cotswold-Severn Group', in T.G.E. Powell, J.X.W.P. Corcoran, J.G. Scott & F.M. Lynch (eds), *Megalithic Enquiries in the West of Britain*, Liverpool University Press, 13-104.
- Crampton, C.B. & Webley, D.**, 1966. 'A section through the Mynydd Troed long barrow', *Bulletin of the Board of Celtic Studies* 22, 71-77.
- Crossley, F.H. & Ridgway, M.H.**, 1952. 'Screens, lofts, stalls, situated in Wales and Monmouthshire: Breconshire', *Archaeologia Cambrensis* 102, 48-82.
- Darvill, T.C.**, 1982. *The Megalithic Tombs of the Severn-Cotswold Region*, Highworth.
- Davies, G.**, 1971. 'Trevecka (1706-1964)', *Brycheiniog* 15, 41-56.
- Davies, H.T.**, 1960. 'The soils of Brecknock', *Brycheiniog* 6, 51-66.
- Davies, J.**, 1963. 'Howell Harris and the Trevecka Settlement', *Brycheiniog* 9, 103-7.
- Davies, J.H., Holroyd, J., Lumley, R.G. & Owen-Roberts, D.**, 1983. *Geology of Powys in Outcrop*, Merioneth Field Study Press.
- Davies, M.**, 1973. 'Field systems of South Wales', in A.R.H. Baker & R.A. Butlin (eds), *Studies of Field Systems in the British Isles*, 480-529, Cambridge University Press.
- Davies, M.**, 2000. *Images of Wales: Around Brecon*, Tempus Publishing, Stroud.
- Davies, W.T.P.**, 1957. 'Episodes in the history of Brecknockshire Dissent', *Brycheiniog* 3, 11-65.
- Davies, R.**, 1982. *Estate Maps of Wales 1600-1836*.
- Davies, R.R.**, 1978. *Lordship and Society in the March of Wales 1282-1400*, Oxford University Press.
- Davies, R.R.**, 1987. *The Age of Conquest: Wales 1063-1415*, Oxford University Press, Oxford.
- Davies, R.R.**, 1995. *The Revolt of Owain Glyn Dwr*, Oxford University Press, Oxford.
- Davies, W.**, 1814-15. *General view of the Agricultural Economy of South Wales*, 2 vols, London.
- Davies, W.**, 1982. *Wales in the Early Middle Ages*, Leicester University Press.
- Dawson, G.F.**, 1909. *The Churches of Brecknockshire*, Swansea.

- Dawson, M.L.**, 1918. 'Notes on the history of Glasbury', *Archaeologia Cambrensis* 73, 279-319.
- Defoe, D.**, *A Tour through Whole Island of Great Britain*, 1971 edn, Penguin Books.
- Dinley, T.** *The Account of the Official Progress of His Grace Henry the First Duke of Beaufort through Wales in 1684*, 1888 edn, London, from Dinley's original MS.
- Dodd, J.P.**, 1960. 'The Breconshire Crop Returns for 1854', *Brycheiniog* 6.
- Ellison, F.B.**, 1938. 'The old tramroad from Brecon to Hay, Whitney, Eardisley, and Kington', *Transactions of the Woolhope Naturalists Field Club*, (1933-5).
- Ellison, F.B.**, 1937. 'The history of the Hay Railway 1810-1864', *Transactions of the Woolhope Naturalists' Field Club*.
- Emery, E.**, 2000. *Greater Medieval Houses of England and Wales 1300-1500*, vol. 2, East Anglia, Central England, and Wales, Cambridge.
- Emery, F.**, 'The farming regions of Wales', in J. Thirsk (ed.), *The Agrarian History of England and Wales*, IV, 1500-1640, 113-60, Cambridge.
- Fairs, G.L.** 1972. *History of the Hay*, London.
- Fisher, J. (ed)**, 1917. *Tours in Wales (1804-13) by Richard Fenton*, Cambrian Archaeological Association.
- George, T.N.**, 1970. *British Regional Geology: South Wales*, 3rd edn, HMSO, London.
- Gibson, A.**, 1999. 'Cursus monuments and possible cursus monuments in Wales: avenues for research (or roads to nowhere)' in A. Barclay & J. Harding (eds), *Pathways and Ceremonies: The Cursus monuments of Britain and Ireland*, Neolithic Studies Group Seminar Papers 4, 130-40.
- Grove, J.C.**, 1962. 'Eighteenth-century land use records in Breconshire', *Brycheiniog* 8, 83-95.
- Gunter, G.W.**, 1988-90. 'The descent of Tregunter', *Brycheiniog* 23, 47-8.
- Harley, J.B.**, 1972. *The County Maps from William Camden's Britannia 1695 by Robert Morden: A Facsimile*, Newton Abbot.
- Haslam, R.**, 1979. *The Buildings of Wales: Powys*, Penguin Books/University of Wales Press.
- Hilling, J.B.**, 1976. *The Historic Architecture of Wales*.
- Hogg, A.H.A. & King, D.J.C.**, 1967. 'Masonry castles in Wales and the Marches', *Archaeologia Cambrensis* 116, 71-132.
- Holden, B.W.**, 2000. 'The making of the Middle March of Wales, 1066-1250', *The Welsh History Review* 20, 207-226.
- Howse, W.H.**, 1948. 'Notes on the history of Glasbury', *Transactions of the Radnorshire Society* 18.
- Hughes, S.**, 1990. *The Brecon Forest Tramroads*, RCAHMW.
- Jack, R.I.**, 1981. 'Fulling-mills in Wales and the March before 1547', *Archaeologia Cambrensis* 130, 70-130.
- Jarrett, M.G.**, 1969 (ed.). *The Roman Frontier in Wales*, University of Wales Press, Cardiff.
- Jenkins, J.G.**, 1969. *The Welsh Woollen Industry*, Cardiff.
- Jenkins, J. G.**, 1970. 'Rural industry in Brecknock', *Brycheiniog* 14, 1-40.
- Jenkinson, A.**, 1997. *Wild Places of Mid Wales. Festival of the Countryside*, Newtown.
- Jervoise, E.**, 1936. *The Ancient Bridges of Wales and Western England*, 1976 edn.
- Jones, A.**, 1984. *Welsh Chapels*, National Museum of Wales.
- Jones, F.**, 1954. *The Holy Wells of Wales*.

- Jones, G.R.J.**, 1960. 'The pattern of settlement on the Welsh border', *Agricultural History Review* 8, 66-81.
- Jones, G.R.J.**, 1985. 'Forms and patterns of medieval settlement in Welsh Wales', in D. Hooke (ed.), *Medieval Villages: a Review of Current Work*, Oxford.
- Jones, N.W.**, 1992. Belmont Road, Hay-on-Wye, Powys: archaeological assessment, CPAT Report 36.
- Jones, N.W.**, 1993. Brecknock Borough Historic Settlements: Earthwork Survey, CPAT Report 83.
- Jones, R., Benson-Evans, K. & Chambers, F.M.**, 1985. 'Human influence upon sedimentation in Llangorse Lake, Wales', *Earth Surface Proc. Landf.* 10, 227-35.
- Jones, S.R. & Smith, J.T.**, 1964. 'The houses of Breconshire. Part II. The Hay and Talgarth District', *Brycheiniog* 10, 69-183.
- Jones, T.**, 1952. *Brut y Tywysogyon or The Chronicles of the Princes: Peniarth MS. 20 Version*, University of Wales Press, Cardiff.
- Jones, T.**, 1909-30. *A History of Brecknockshire*, 4 vols, edn.
- Kay, R.E.**, 1964. 'Castell Dinas', *Brycheiniog* 10, 15-27.
- King, D.J.C.**, 1961. 'The castles of Breconshire', *Brycheiniog* 7, 71-94.
- King, D.J.C.**, 1983. *Castellarium Anglicanum*, 2 vols, New York.
- Lennox, P.J.**, 1994-95. 'Excavations at Belmont Road, Hay-on-Wye, 1992', *Brycheiniog* 27, 25-41.
- Lewes, F.**, 1995-96. 'Llangwathen and the Lewes Family - c. 1570 to 1868', *Brycheiniog* 28, 23-32.
- Lewis, G.**, 1976-77. 'Topographical prints of Breconshire in the National Library of Wales', *Brycheiniog* 17, 66-85.
- Lewis, J. M.**, 1980. 'Pottery from a post-medieval kiln at Whole House Farm, Talgarth, Powys', *Medieval and Later Pottery in Wales* 3, 48-55.
- Lewis, S.**, 1833. *A Topographical Dictionary of Wales*, 2 vols, London.
- Lloyd, C. & Savory, H.N.**, 1958. 'Excavations at and Early Iron Age Hillfort and a Romano-British iron-smelting place at Gwernyfed Park, Aberllynfi, in 1951', *Brycheiniog* 4, 1-52.
- Lloyd, J.E.**, 1911. *A History of Wales from the Earliest Times to the Edwardian Conquest*, 2 vols.
- Lloyd, T.A.**, 1957. 'The Georgian period in Welsh building', *Archaeologia Cambrensis* 106.
- Lloyd, T.**, 1986. *The Lost Houses of Wales*.
- Lowe, J.**, 1985. *Welsh Country Workers Housing 1775-1875*, National Museum of Wales.
- Ludlow, N.**, 2000. 'Excavations in medieval Talgarth', *Brycheiniog* 32, 11-48.
- Lynch, F.**, Aldhouse-Green, S., & Davies, J.L., 2000. *Prehistoric Wales*, Stroud.
- Margary, I.D.**, 1973. *Roman Roads in Britain*, 3rd edn.
- Martin, C.H.R. & Walters, M.J.**, 1993. Brecknock Borough Historic Settlements, CPAT Report 60.
- Minchinton, W. E., Pollins, H., & Roberts, R. O.**, 1961. 'The place of Brecknock in the industrialisation of South Wales', *Brycheiniog* 7, 1-70.
- Moore, P.D.**, 1978. 'Studies in the vegetational history of mid-Wales, V: stratigraphy and pollen analysis of Llyn Mire in the Wye Valley', *New Phytologist* 80, 281-303.
- Moore, P.D.**, 1981. 'Neolithic land use in mid-Wales', *Proceedings of the 4th International Palynological Conference, Lucknow*, 3, 279-90.
- Morgan, R.**, 1995-96. 'The Extent of the lordship of Hay', *Brycheiniog* 28, 15-22.



- Morris, J.**, 1984-85. 'A social analysis of Hay 1754-1890', *Brycheiniog*, 21, 28-33.
- Morris, J.**, 1986-87. 'Hay-on-Wye: local economy in the nineteenth century', *Brycheiniog* 22, 112-9.
- Muir, R.**, 2000. *The New Reading the Landscape*, University of Exeter Press.
- Nash-Williams, V.E.**, 1950. *The Early Christian Monuments of Wales*.
- Nuttall, G.F.**, 1965. *Howel Harris, 1714-1773*, University of Wales Press, Cardiff.
- Olding, Frank**, 2000. *The Prehistoric Landscapes of the Eastern Black Mountains*, British Archaeological Reports, British Series 297.
- Owen, D.H.**, 1989. 'The Middle Ages' in D.H. Owen (ed.), *Settlement and Society in Wales*, University of Wales Press, Cardiff.
- Owen, G.D.**, 1964. *Elizabethan Wales*, Cardiff.
- Peate, I. C.**, 1945. *Welsh Folk Crafts and Industries*.
- Price, M.D.R.**, 1981. *Palynological Studies on the Black Mountains, South Wales*, unpublished PhD thesis, University of London.
- Price, M.D.R. & Moore, P.D.**, 1984. 'Pollen dispersion in the hills of Wales: a pollen shed hypothesis', *Pollen et Spores* 26, 127-36.
- Price, T.D.W.**, 1980-81. 'Kilvert and Breconshire', *Brycheiniog* 19, 50-9
- Pugh, T.B. (ed)** 1963. *The Marcher Lordships of South Wales, 1415-1536: Select Documents*, Board of Celtic Studies, History and Law Series 20, Cardiff.
- RCAHMW** 1986. *An Inventory of the Ancient Monuments in Brecknock (Brycheiniog): The Prehistoric and Roman Monuments. Part ii: Hill-forts and Roman Remains*, Royal Commission on the Ancient and Historical Monuments of Wales.
- RCAHMW** 1997. *An Inventory of the Ancient Monuments in Brecknock (Brycheiniog): The Prehistoric and Roman Monuments. Part i: Later Prehistoric Monuments and Unenclosed Settlements to 1000 A.D.*, Royal Commission on the Ancient and Historical Monuments of Wales.
- Rees, T.**, 1883. *History of Protestant Nonconformity in Wales*, 2nd edn, London.
- Rees, W.**, 1915-16. 'The medieval lordship of Brecon', *Transactions of the Honourable Society of Cymmrodorion*, 165-224.
- Rees, W.**, 1932. *Map of South Wales and the Border in the Fourteenth Century*.
- Rees, W.**, 1972. *An Historical Atlas of Wales from Early to Modern Times*, 2nd edn, London.
- Richards, M.**, 1969. *Welsh Administrative and Territorial Units: Medieval and Modern*, Cardiff, University of Wales Press.
- Rowlands, I.W.**, 1968. 'Boughrood in the Middle Ages', *Transactions of the Radnorshire Society* 38, 68-70.
- Rowlands, I.W.**, 1982-3. 'William de Braose and the lordship of Brecon', *Bulletin of the Board of Celtic Studies* 30, 123-33.
- Savory, H.N.**, 1955. 'Prehistoric Breconshire' *Brycheiniog* 1, 79-125.
- Savory, H.N.**, 1956. 'The excavation of the Pipton long cairn, Breconshire' *Archaeologia Cambrensis* 105, 7-48.
- Savory, H.N.**, 1963. 'The personality of the southern Marches of Wales in the Neolithic and early Bronze Ages', in I. Ll. Foster & L. Alcock (eds), *Culture and Environment*, 25-52, London.
- Savory, H.N.**, 1955. 'Prehistoric Brecknock' *Brycheiniog* 15, 3-22.
- Seaborne, M.**, 1992. *Schools in Wales 1500-1900: a Social and Architectural History*, Denbigh.

- Silvester, R.J.**, 1994. Radnorshire Historic Settlements, CPAT Report 92.
- Silvester, R.J.**, 1999a. Welsh Historic Churches Project: The Churches of Breconshire, CPAT Report 308.
- Silvester, R.J. & Dorling, P.J.**, 1993. Historic Settlements in the Brecon Beacons National Park, CPAT Report 44.
- Silvester, R.J. & Jones, N.W.** 1992. 'Excavations at Hoel-y-dwr, Hay-on-Wye, Breconshire', Brycheiniog 24.
- Smith, J.B.**, 1979. 'Quo Warrento: proceedings relating to Cantref Selyf in the lordship of Brecon 1349', Bulletin of the Board of Celtic Studies 28, 267-88.
- Smith, J. B.**, 1998. Llywelyn ap Gruffudd: Prince of Wales, University of Wales Press, Cardiff.
- Smith, L. Toulmin (ed.)**, 1907-10. The Itinerary of John Leland the Antiquary, in or about the years 1535-45, 5 vols, London,.
- Smith, P.**, 1988. Houses of the Welsh Countryside, HMSO.
- Soil Survey** 1983. Soils of England and Wales, Sheet 2, Wales, 1:250,000, Soil Survey of England and Wales.
- Soulsby, I.**, 1983. The Towns of Medieval Wales, Chichester, Phillimore.
- Spurgeon, C.J.**, 1981. 'Moated sites in Wales', in F.A. Aberg and A.E. Brown, Medieval Moated Sites in North-West Europe, British Archaeological Series 121, 19-70.
- Stanford, S.C.**, 1980. The Archaeology of the Welsh Marches. London, Collins.
- Stephens, M.**, 1986. The Oxford Companion to the Literature of Wales, Oxford.
- Sylvester, D.**, 1969. The Rural Landscape of the Welsh Borderland, London.
- Thomas, C.**, 1975. 'Colonization, enclosures and the rural landscape', National Library of Wales Journal 19, 133-46.
- Thomas, C.**, 1984. 'Rural Settlement', in H. Carter (ed.), The National Atlas of Wales, Cardiff.
- Thomas, C.**, 1989. 'Rural settlement in the Modern Period', in D.H. Owen (ed.), Settlement and Society in Wales, 249-67, University of Wales Press, Cardiff.
- Thomas, C.**, 1994. And Shall These Mute Stones Speak? Post-Roman Inscriptions in Western Britain, University of Wales Press, Cardiff.
- Thomas, D.**, 1963. Agriculture in Wales During the Napoleonic Wars: A Study in the Geographical Interpretation of Historical Sources, University of Wales Press, Cardiff.
- Thomas, T.M.** 1959. 'The geomorphology of Brecknock', Brycheiniog 5, 55-136.
- Thorpe, L.**, 1978 (trans). Gerald of Wales, the Journey through Wales and the Description of Wales, Penguin Books.
- Turner, H.L.**, 1971. Town Defences in England and Wales, London.
- Walker, D.**, 1977. The Norman Conquerors, Cardiff.
- Walker, D.**, 1990. Medieval Wales, Cambridge University Press.
- Walker, R.F.**, 1998-99. 'Bwlchyddinas Castle, Breconshire, and the Survey of 1337', Brycheiniog 31, 19-29.
- Webley, D.P.**, 1976. How the west was won: prehistoric land-use in the Southern Marches, in G.C. Boon & J.M. Lewis (eds), Welsh Antiquity, 19-33, National Museum of Wales, Cardiff.
- Whittle, L.**, 1992. The Historic Gardens of Wales.
- William, E.**, 1986. The Historical Farm Buildings of Wales, Edinburgh.

- Williams, D.**, 1955. *The Rebecca Riots: A Study in Agrarian Discontent*, Cardiff.
- Williams, D.H.**, 1984. *The Welsh Cistercians, Caldey Island*.
- Williams, D. H.**, 1990. *Atlas of Cistercian Lands in Wales*, Cardiff, University of Wales Press.
- Williams, G.**, 1976. *The Welsh Church from Conquest to Reformation*, revised edn, University of Wales Press, Cardiff.
- Williams, G.**, 1993. *Renewal and Reformation Wales c. 1415-1642*, Oxford University Press, Oxford.
- Williams, R.G.**, 1995. *Talgarth in Photographs*, vol. 1, Abertillery.
- Williams, R.G.**, 1996. *Talgarth in Photographs*, vol. 2, Abertillery.
- Williams, S.J.**, 1965. 'Some Breconshire place-names', *Brycheiniog* 11, 155-67.
- Young, A.**, 1776. *Tours in England and Wales: Selected from the Annals of Agriculture*, reprinted 1932.
- Yates, R.A.**, 1965. 'The south-east Borderland', in E.G. Bowen (ed.), *Wales: A Physical, Historical and Regional Geography*, 486-513, 1965 edn, London.